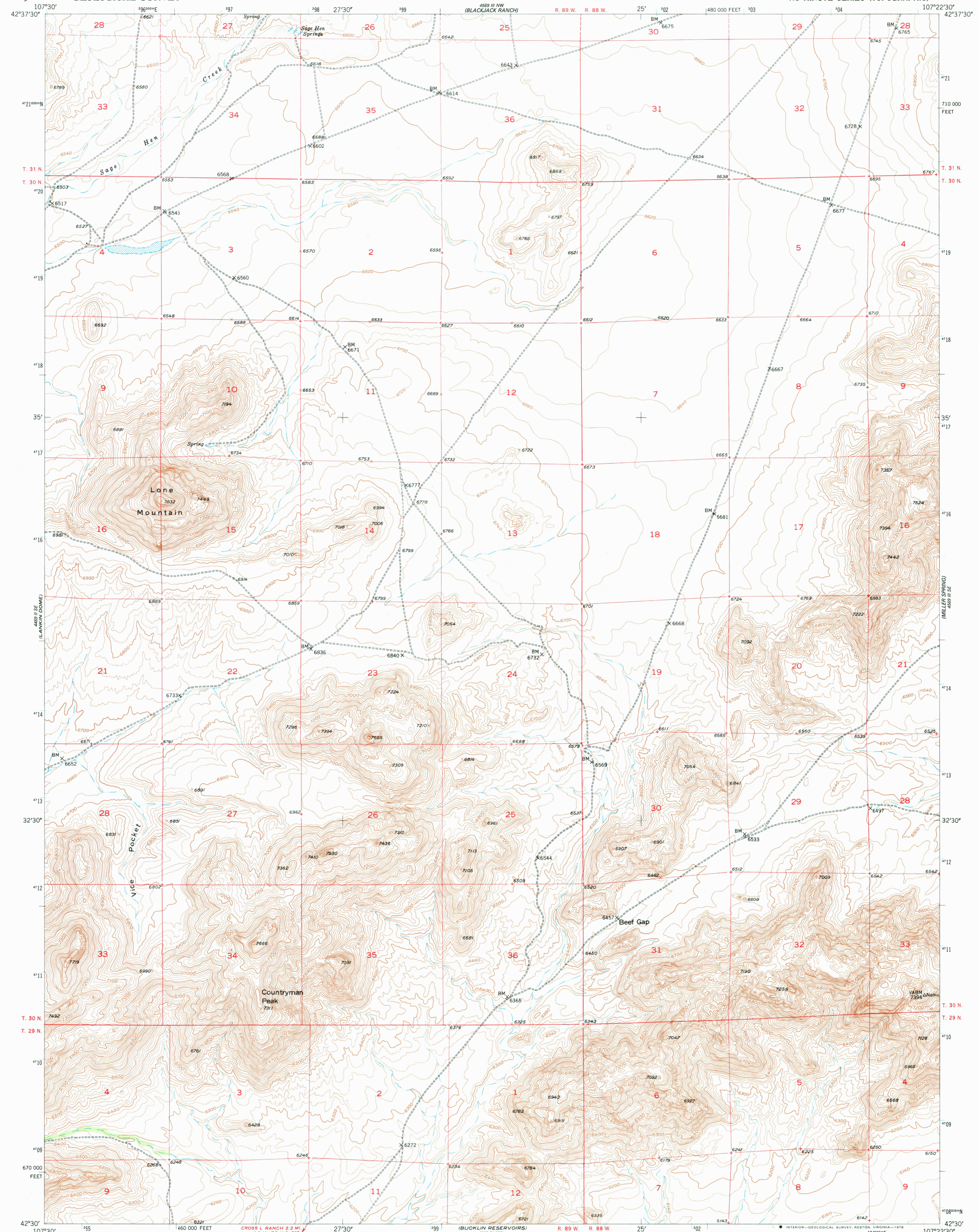


4859 III SW
BARLOW GAP

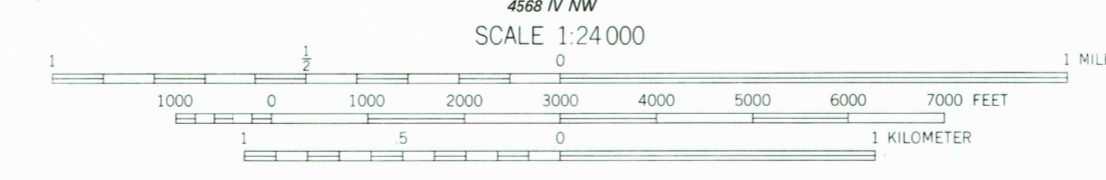
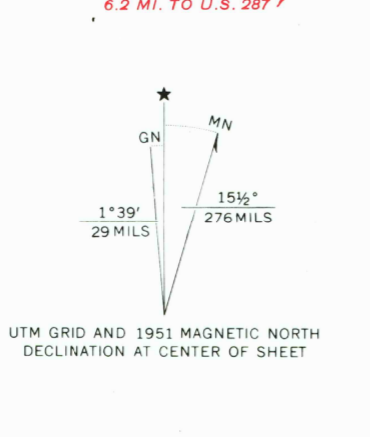
UNITED STATES
DEPARTMENT OF THE INTERIOR
GEOLOGICAL SURVEY

LONE MOUNTAIN QUADRANGLE
WYOMING-NATRONA CO.
7.5 MINUTE SERIES (TOPOGRAPHIC)

4859 III SW
BARLOW GAP

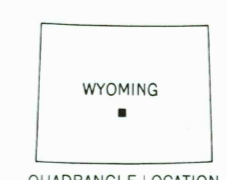


Maped, edited, and published by the Geological Survey as part of the Department of the Interior program for the development of the Missouri River Basin Control by USGS and USC&GS
Topography from aerial photographs by multiplex methods by Ryall Engineering Co. Aerial photographs taken 1946 and 1947. Field check 1951
Polyconic projection. 1927 North American datum 10,000-foot grid based on Wyoming coordinate system, east central zone 1000-meter Universal Transverse Mercator grid ticks, zone 13, shown in blue
Dashed land lines indicate approximate locations



CONTOUR INTERVAL 20 FEET
NATIONAL GEODETIC VERTICAL DATUM OF 1929

THIS MAP COMPLIES WITH NATIONAL MAP ACCURACY STANDARDS
FOR SALE BY U. S. GEOLOGICAL SURVEY, DENVER, COLORADO 80225, OR RESTON, VIRGINIA 22092
A FOLDER DESCRIBING TOPOGRAPHIC MAPS AND SYMBOLS IS AVAILABLE ON REQUEST



ROAD CLASSIFICATION

Heavy-duty	4 LANE 6 LANE	Light-duty
Medium-duty	2 LANE 6 LANE	Unimproved dirt
U. S. Route		State Route

USGS
Historical File
Topographic Division
LONE MOUNTAIN, WYO.
N4230-W10722.5/7.5
1951
AMS 4569 III SW—SERIES V874

APR 07 1978

RETURN TO:
USGS AND HISTORICAL MAP ARCHIVES

1300