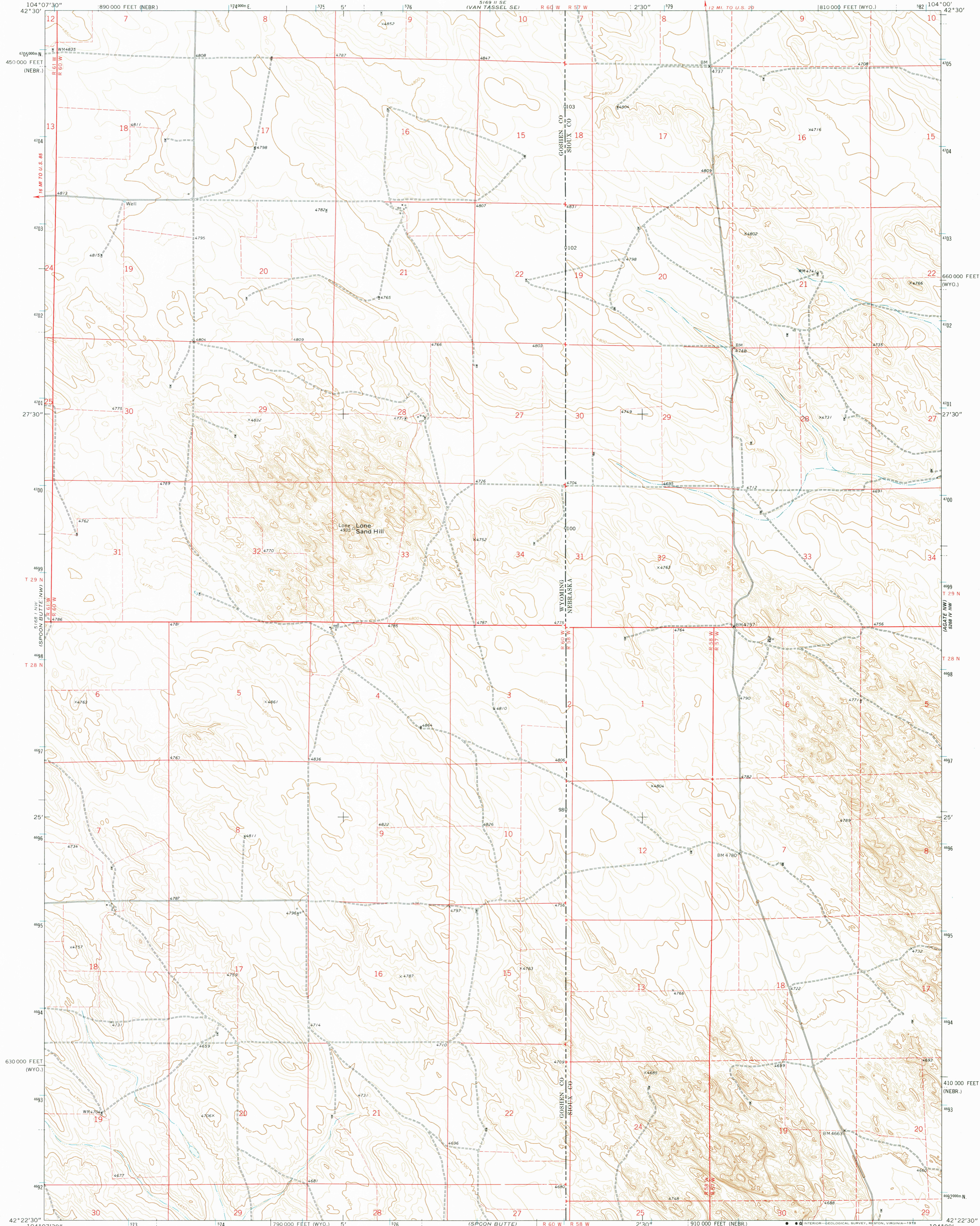
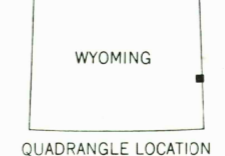
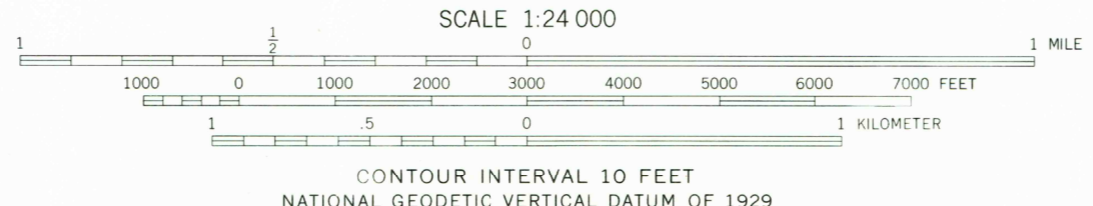
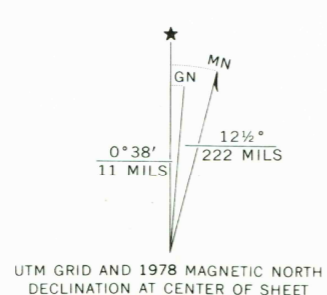


UNITED STATES  
DEPARTMENT OF THE INTERIOR  
GEOLOGICAL SURVEY

LONE SAND HILL QUADRANGLE  
WYOMING-NEBRASKA  
7.5 MINUTE SERIES (TOPOGRAPHIC)



Mapped, edited, and published by the Geological Survey  
Control by USGS and NOS/NOAA  
Topography by photogrammetric methods from aerial photographs taken 1973. Field checked 1974. Map edited 1978  
Projection: Wyoming coordinate system, east zone (transverse Mercator)  
10,000-foot grid ticks based on Wyoming coordinate system, east zone and Nebraska coordinate system, north zone  
1,000-meter Universal Transverse Mercator grid ticks, zone 13, shown in blue. 1927 North American datum  
Fine red dashed lines indicate selected fence lines



ROAD CLASSIFICATION

Primary highway, hard surface	Light-duty road, hard or improved surface
Secondary highway, hard surface	Unimproved road
Interstate Route	U. S. Route
	State Route

THIS MAP COMPLIES WITH NATIONAL MAP ACCURACY STANDARDS  
FOR SALE BY U. S. GEOLOGICAL SURVEY, DENVER, COLORADO 80225, OR RESTON, VIRGINIA 22092  
A FOLDER DESCRIBING TOPOGRAPHIC MAPS AND SYMBOLS IS AVAILABLE ON REQUEST

LONE SAND HILL, WYO.—NEBR.  
N4222.5—W10400/7.5

USGS  
Historical File  
Topographic Division  
1978  
AMS 5168 I NE—SERIES V874

MAR 14 1979  
2688

RETURN TO:  
USGS AND HISTORICAL MAP ARCHIVES