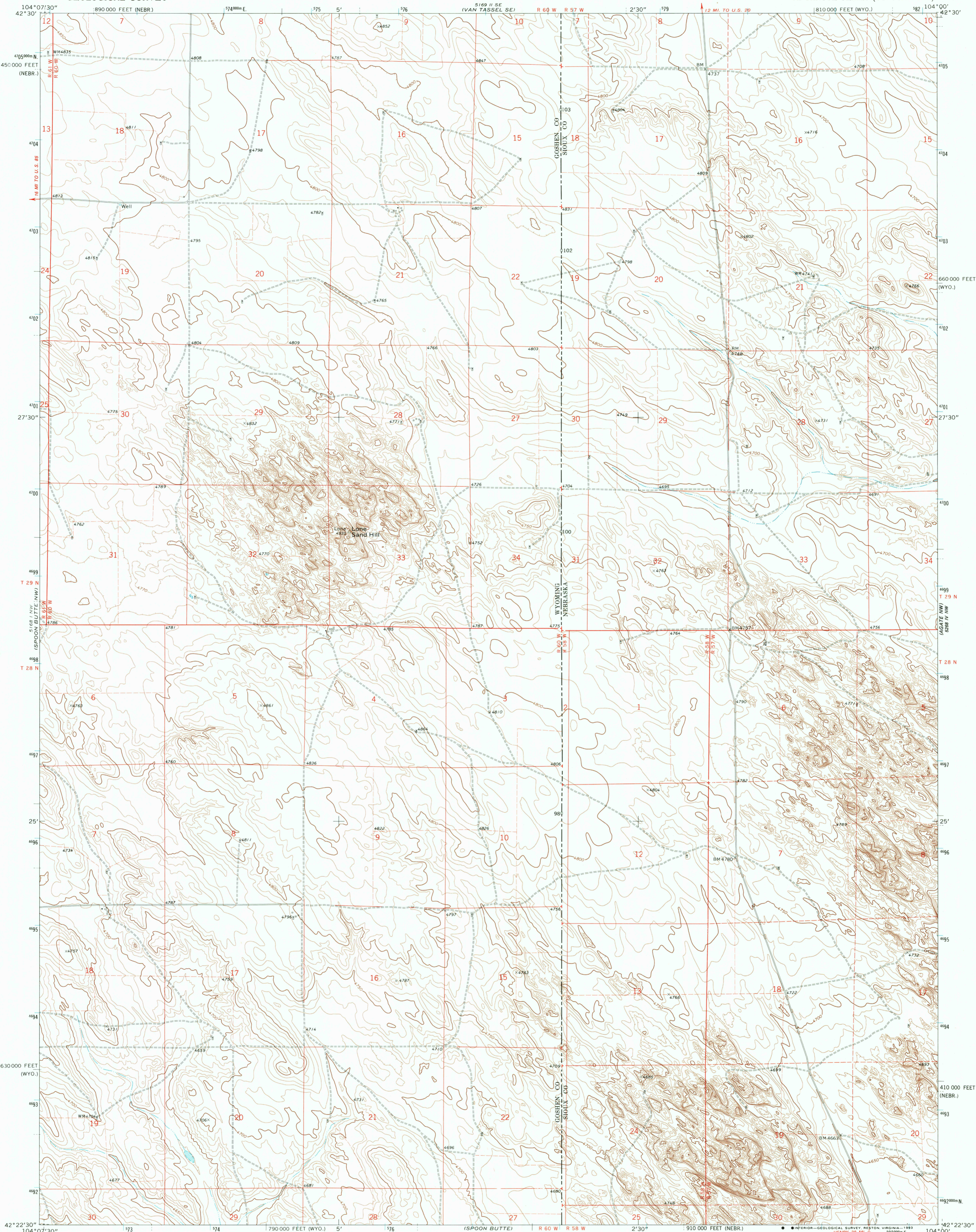
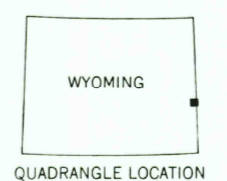
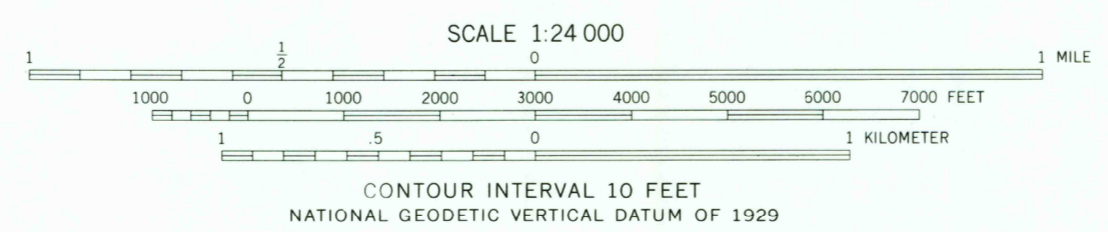
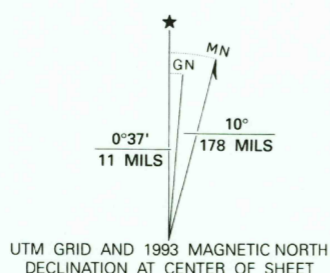


UNITED STATES  
DEPARTMENT OF THE INTERIOR  
GEOLOGICAL SURVEY

LONE SAND HILL QUADRANGLE  
WYOMING-NEBRASKA  
7.5 MINUTE SERIES (TOPOGRAPHIC)



Produced by the United States Geological Survey  
Control by USGS and NOS/NOAA  
Compiled from aerial photographs taken 1973. Field checked 1974  
Map edited 1978  
1927 North American Datum (NAD 27). Projection:  
Wyoming Coordinate System, east zone (Transverse Mercator)  
10 000-foot ticks: Wyoming Coordinate System, east zone and  
Nebraska Coordinate System, north zone  
Blue 1000-meter Universal Transverse Mercator ticks, zone 13  
North American Datum of 1983 (NAD 83) is shown by dashed  
corner ticks. The values of the shift between NAD 27 and NAD 83  
for 7.5-minute intersections are given in USGS Bulletin 1875  
Fine red dashed lines indicate selected fence lines  
Photinspected from 1991 source; no major culture  
or drainage changes observed. Names verified 1993



ROAD CLASSIFICATION

Primary highway, hard surface	Light-duty road, hard or improved surface
Secondary highway, hard surface	Unimproved road
Interstate Route	U. S. Route
	State Route

THIS MAP COMPLIES WITH NATIONAL MAP ACCURACY STANDARDS  
FOR SALE BY U. S. GEOLOGICAL SURVEY, DENVER, COLORADO 80225, OR RESTON, VIRGINIA 22092  
A FOLDER DESCRIBING TOPOGRAPHIC MAPS AND SYMBOLS IS AVAILABLE ON REQUEST

LONE SAND HILL, WYO.-NEBR.  
42104-D1-TF-024  
1978  
MINOR REVISION 1993  
DMA 5168 1 NE-SERIES V874

