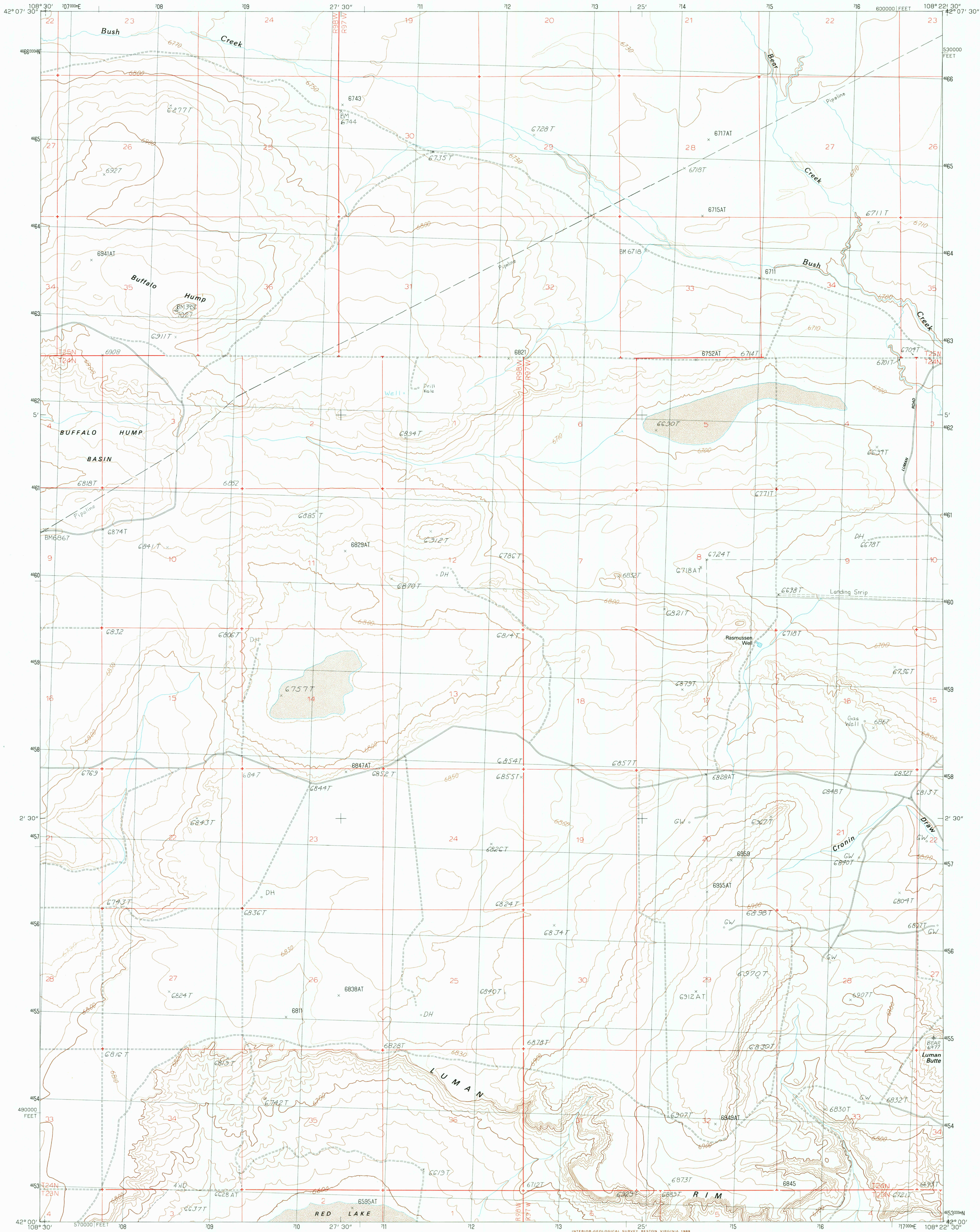


UNITED STATES
DEPARTMENT OF THE INTERIOR
GEOLOGICAL SURVEY

LUMAN RIM QUADRANGLE
WYOMING-SWEETWATER CO.
7.5 MINUTE SERIES (TOPOGRAPHIC)



PRODUCED BY THE UNITED STATES GEOLOGICAL SURVEY
CONTROL BY USGS, NOS/NOAA
COMPILED FROM AERIAL PHOTOGRAPHS TAKEN 1957
FIELD CHECKED 1960
LIMITED REVISION FROM AERIAL PHOTOGRAPHS TAKEN 1984
FIELD CHECKED 1986
MAP EDITED 1989
PROJECTION TRANSVERSE MERCATOR
GRID: 1000-METER UNIVERSAL TRANSVERSE MERCATOR
ZONE 12
10,000-FOOT STATE GRID TICKS WYOMING, WEST CENTRAL ZONE
UTM GRID DECLINATION 14° EAST
1989 MAGNETIC NORTH DECLINATION 13°30' EAST
VERTICAL DATUM NATIONAL GEODETIC VERTICAL DATUM OF 1929
HORIZONTAL DATUM 1927 NORTH AMERICAN DATUM
To place on the predicted North American Datum of 1983,
move the projection lines as shown by dashed corner ticks
(9 meters north and 55 meters east)
There may be private inholdings within the boundaries of any
Federal and State Reservations shown on this map
Public Land Survey System is shown as Published in 1960 and
verified or supplemented in 1986

PROVISIONAL MAP
Produced from original
manuscript drawings. Infor-
mation shown as of date of
field check.

SCALE 1:24 000
CONTOUR INTERVAL 20 FEET
SUPPLEMENTARY CONTOUR INTERVAL 10 FEET
To convert meters to feet multiply by 3.2808
To convert feet to meters multiply by .3048
THIS MAP COMPLIES WITH NATIONAL MAP ACCURACY STANDARDS
FOR SALE BY U.S. GEOLOGICAL SURVEY, DENVER, COLORADO 80225
OR RESTON, VIRGINIA 22092

1	2	3	1 John Hay Reservoir
4	5	2 Five Fingers Butte NE	
6	7	3 Buffalo Hump Basin	
		4 Bush Lake	
		5 Black Rock Flat East	
		6 Red Lake	
		7 Red Lake	
		8 Red Lake NE	

ROAD LEGEND
Improved Road
Unimproved Road
Trail
Interstate Route
U.S. Route
State Route

LUMAN RIM, WYOMING
PROVISIONAL EDITION 1989

42108-A4-TF-024

USGS MAP HISTORICAL MAP
MAY 16 1989
REC'D FILE COPY