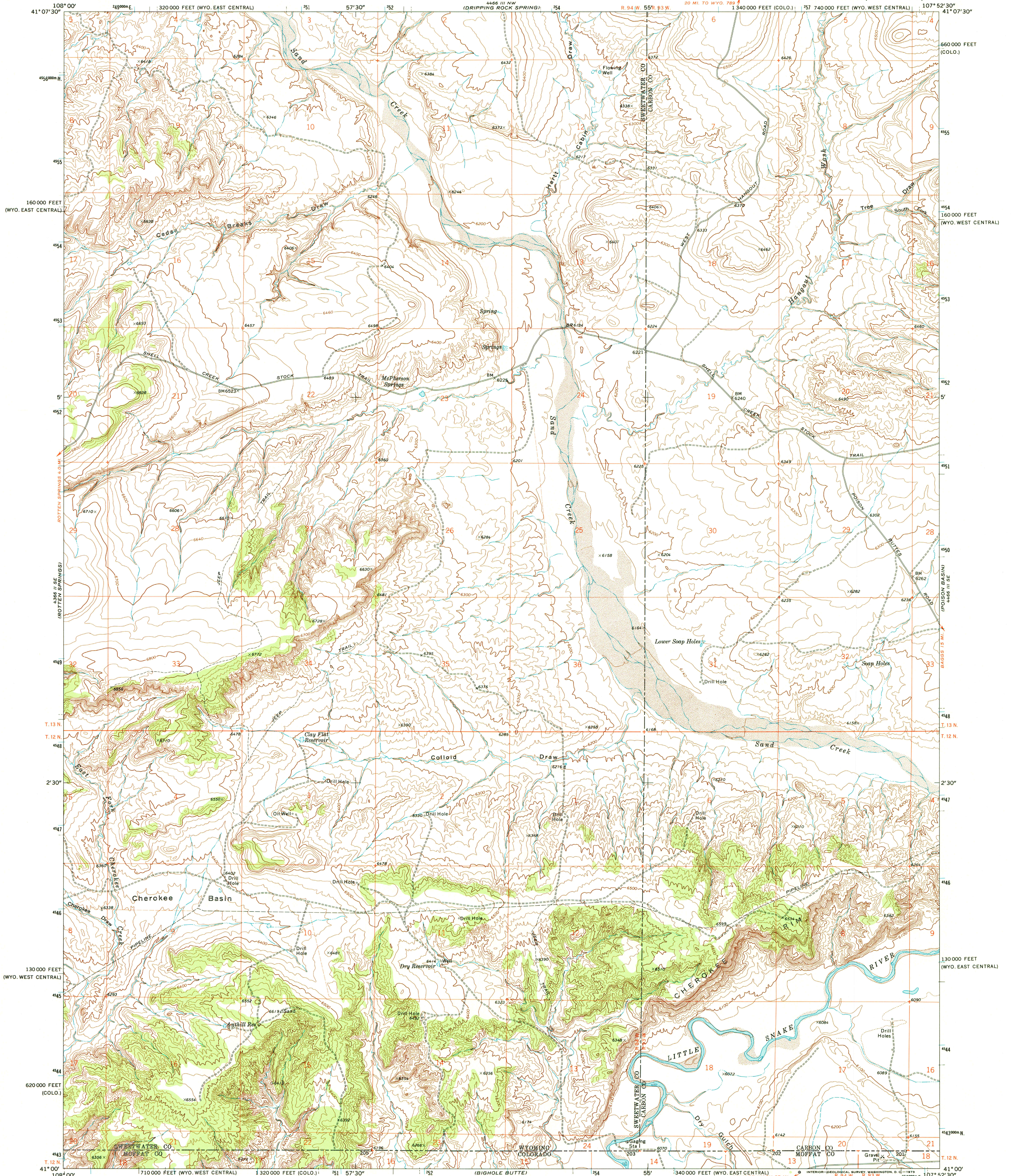
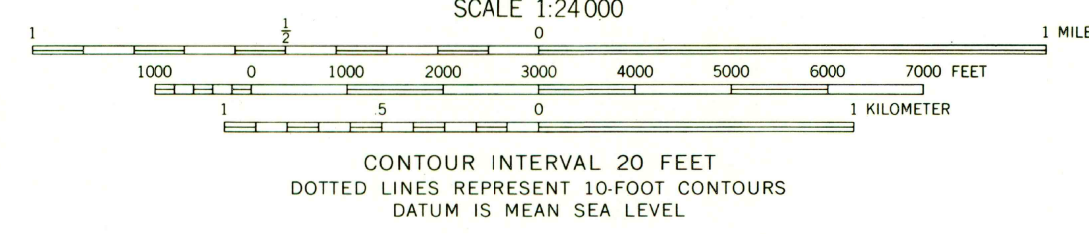
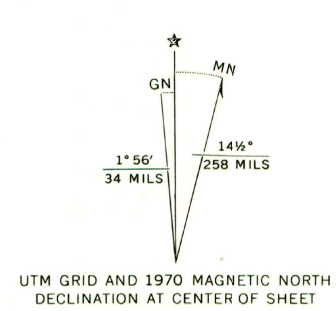


UNITED STATES
DEPARTMENT OF THE INTERIOR
GEOLOGICAL SURVEY

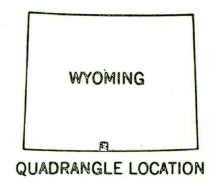
MC PHERSON SPRINGS QUADRANGLE
WYOMING-COLORADO
7.5 MINUTE SERIES (TOPOGRAPHIC)



Mapped, edited, and published by the Geological Survey
Control by USGS and USC&GS
Topography by photogrammetric methods from aerial photographs taken 1968. Field checked 1970
Polyconic projection. 1927 North American datum
10,000-foot grids based on Wyoming coordinate system, east central and west central zones and on Colorado coordinate system, north zone
1000-meter Universal Transverse Mercator grid ticks, zone 13, shown in blue
Fine red dashed lines indicate selected fence lines
T. 12 N., sixth Principal Meridian, is duplicated in Colorado and Wyoming



THIS MAP COMPLIES WITH NATIONAL MAP ACCURACY STANDARDS
FOR SALE BY U.S. GEOLOGICAL SURVEY
DENVER, COLORADO 80225, OR RESTON, VIRGINIA 22092
A FOLDER DESCRIBING TOPOGRAPHIC MAPS AND SYMBOLS IS AVAILABLE ON REQUEST



ROAD CLASSIFICATION

Primary highway, hard surface	Light-duty road, hard or improved surface
Secondary highway, hard surface	Unimproved road
Interstate Route	U. S. Route
	State Route

MC PHERSON SPRINGS, WYO.-CO.
N4100-W10752.5/7.5

1970

AMS 4466 III SW-SERIES V874