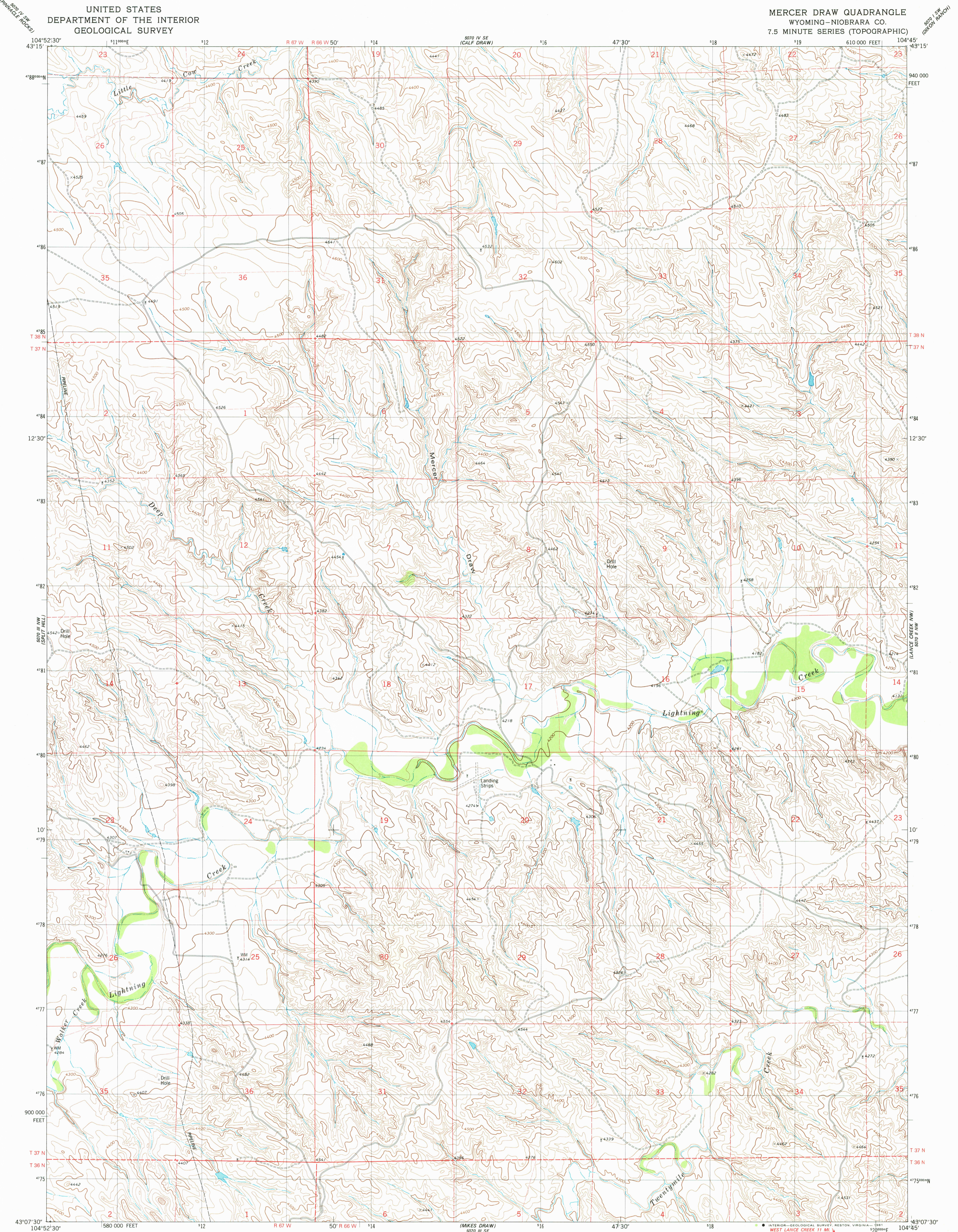
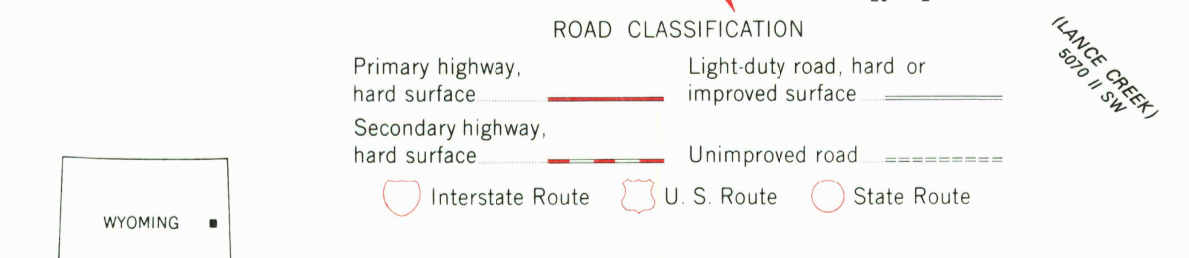
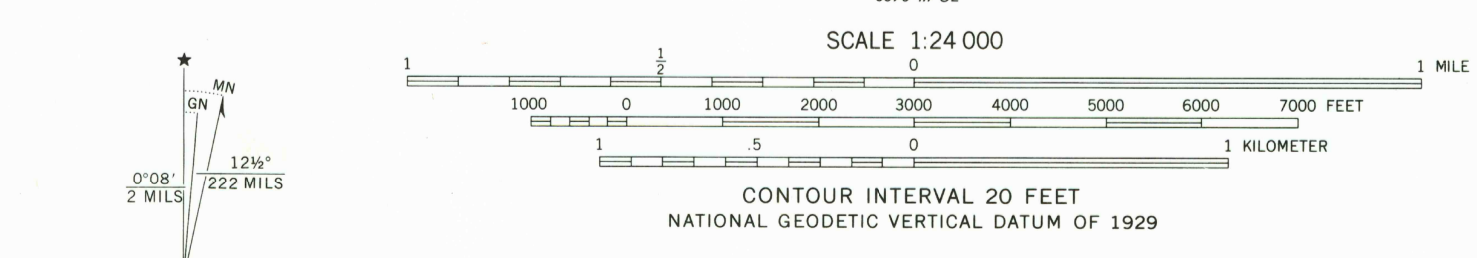


UNITED STATES
DEPARTMENT OF THE INTERIOR
GEOLOGICAL SURVEY

MERCER DRAW QUADRANGLE
WYOMING-NIOBRARA CO.
7.5 MINUTE SERIES (TOPOGRAPHIC)



Mapped, edited, and published by the Geological Survey
Control by USGS and NOS/NOAA
Topography by photogrammetric methods from aerial photographs taken 1974. Field checked 1976. Map edited 1981
Projection and 10,000-foot grid ticks: Wyoming coordinate system, east zone (transverse Mercator) 1000-meter Universal Transverse Mercator grid, zone 13 1927 North American datum
To place on the predicted North American Datum 1983 move the projection lines 7 meters north and 46 meters east as shown by dashed corner ticks
Fine red dashed lines indicate selected fence lines



THIS MAP COMPLIES WITH NATIONAL MAP ACCURACY STANDARDS
FOR SALE BY U.S. GEOLOGICAL SURVEY, DENVER, COLORADO 80225, OR RESTON, VIRGINIA 22092
A FOLDER DESCRIBING TOPOGRAPHIC MAPS AND SYMBOLS IS AVAILABLE ON REQUEST

MERCER DRAW, WYO.
N4307.5-W10445/7.5
1981
DMA 5070 III NE-SERIES V874

RETURN TO:
USGS AND HISTORICAL MAP ARCHIVES

2532