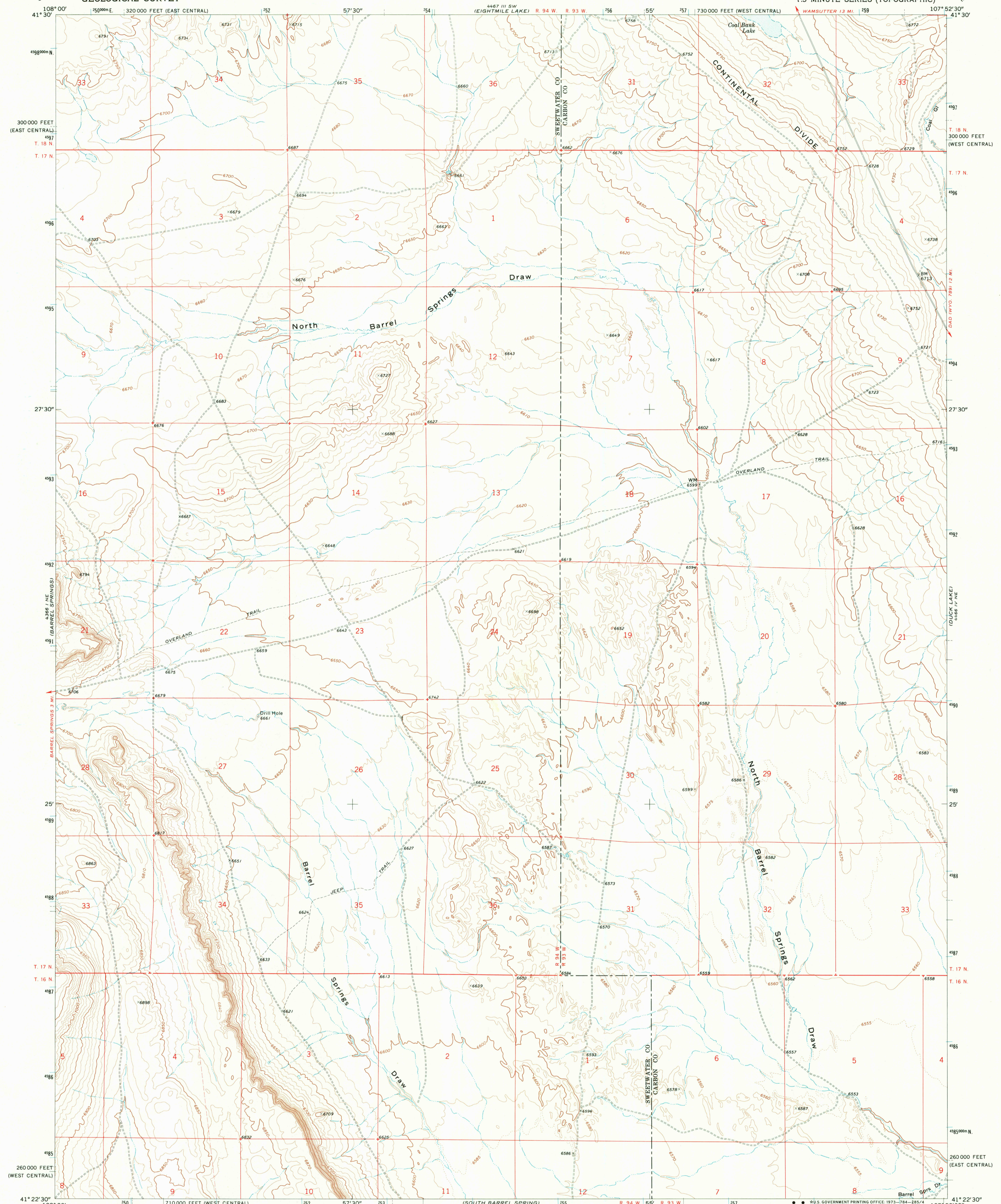
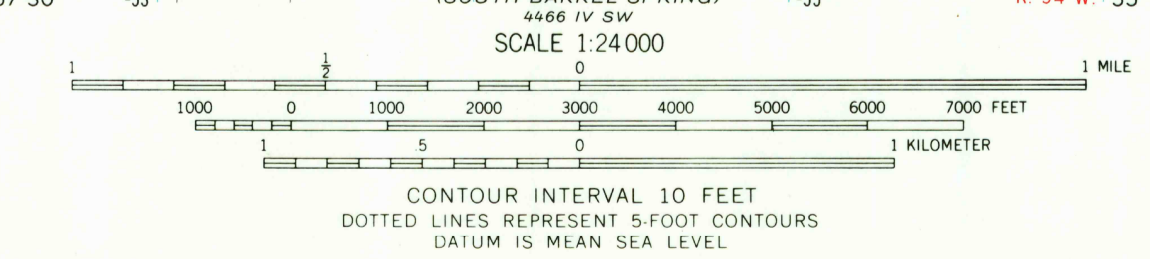
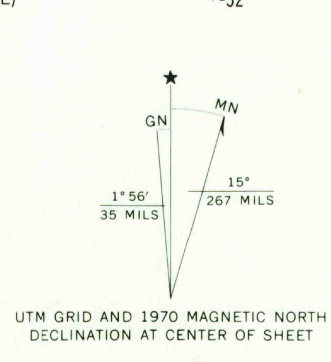


UNITED STATES
DEPARTMENT OF THE INTERIOR
GEOLOGICAL SURVEY

MEXICAN FLATS NW QUADRANGLE
WYOMING
7.5 MINUTE SERIES (TOPOGRAPHIC)



Maped, edited, and published by the Geological Survey
Control by USGS and USC&GS
Topography by photogrammetric methods from aerial photographs taken 1968. Field checked 1970
Polyconic projection. 1927 North American datum
10,000-foot grids based on Wyoming coordinate system, west central and east central zones
1000-meter Universal Transverse Mercator grid ticks, zone 13, shown in blue
Fine red dashed lines indicate selected fence lines



ROAD CLASSIFICATION

Primary highway, hard surface	Light-duty road, hard or improved surface
Secondary highway, hard surface	Unimproved road

Interstate Route U.S. Route State Route

WYOMING QUADRANGLE LOCATION

THIS MAP COMPLIES WITH NATIONAL MAP ACCURACY STANDARDS
FOR SALE BY U.S. GEOLOGICAL SURVEY, DENVER, COLORADO 80225, OR WASHINGTON, D.C. 20242
A FOLDER DESCRIBING TOPOGRAPHIC MAPS AND SYMBOLS IS AVAILABLE ON REQUEST

MEXICAN FLATS NW, WYO.
N4122.5-W10752.5/7.5

1970

AMS 4466 IV NW-SERIES V874

RETURN TO:
USGS MID-HISTORICAL MAP ARCHIVES

MEXICAN FLATS NW
4466 IV NW

2500