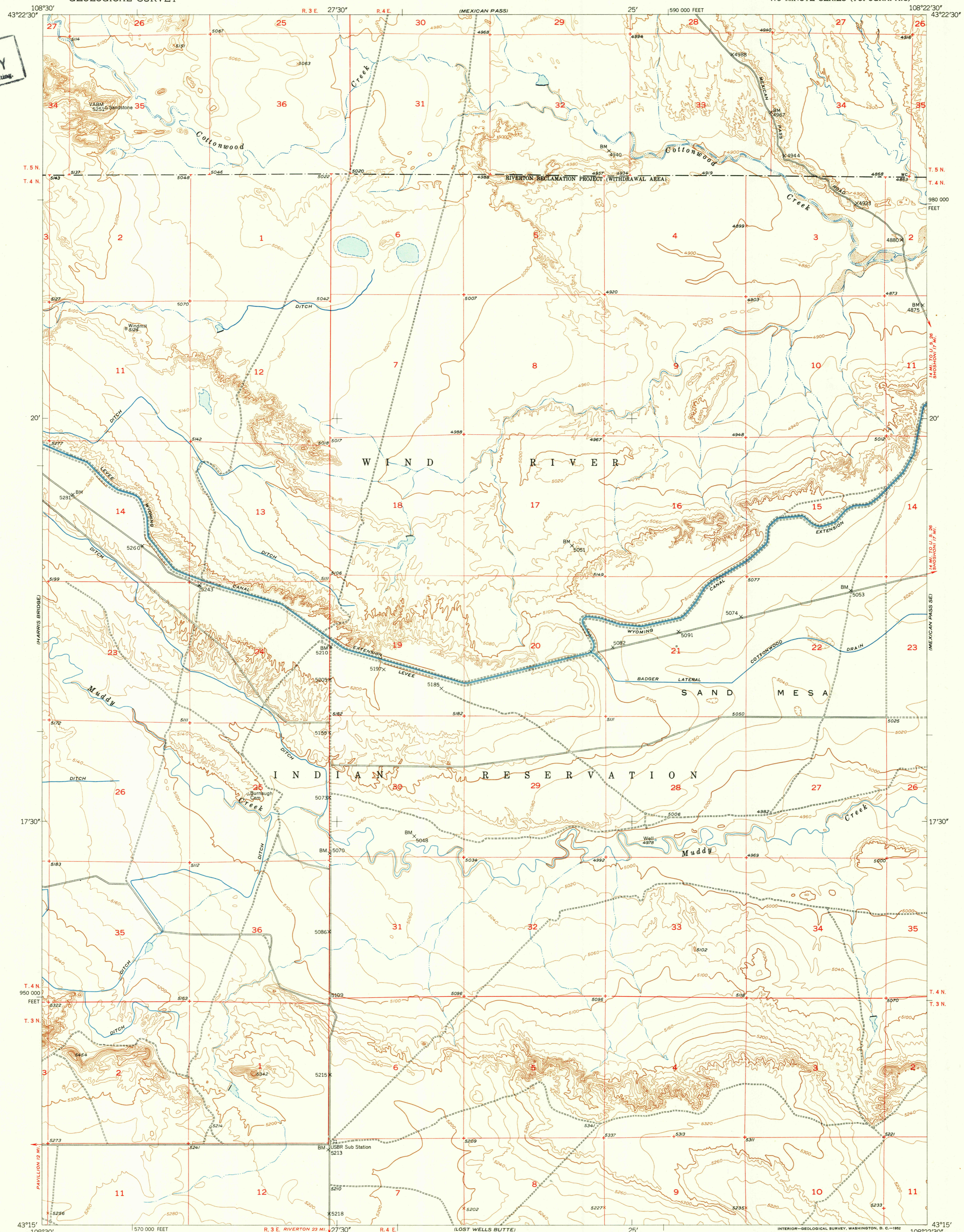
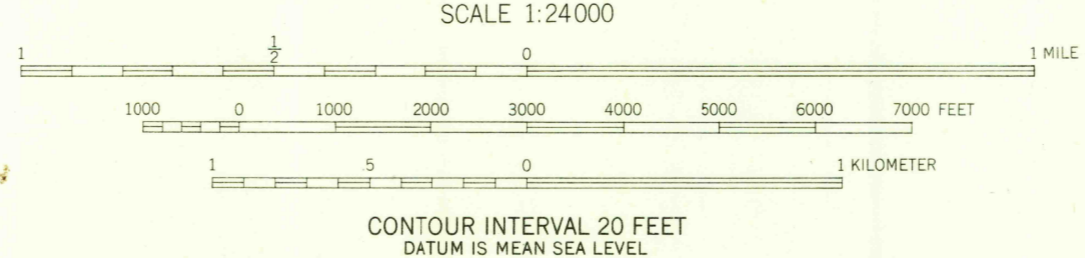
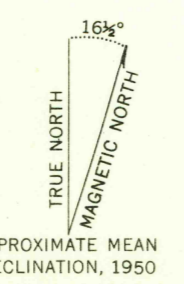


U.S.G.S.  
FILE COPY  
Inspection and Editing



Mapped by the Geological Survey and Bureau of Reclamation  
Edited and published by the Geological Survey  
as part of the Department of the Interior program  
for the development of the Missouri River Basin  
Control by USGS and USC&GS  
Topography from aerial photographs by multiplex methods 1950  
and plane-table surveys 1921 and 1950. Aerial photographs  
taken 1948. Field check 1950  
Polyconic projection. 1927 North American datum  
10,000-foot grid based on Wyoming coordinate system,  
west central zone



ROAD CLASSIFICATION

Heavy-duty	4 LANE 6 LANE	Light-duty
Medium-duty	4 LANE 6 LANE	Unimproved dirt
U.S. Route		State Route

THIS MAP COMPLIES WITH NATIONAL MAP ACCURACY STANDARDS  
FOR SALE BY U. S. GEOLOGICAL SURVEY, FEDERAL CENTER, DENVER, COLORADO OR WASHINGTON 25, D. C.  
A FOLDER DESCRIBING TOPOGRAPHIC MAPS AND SYMBOLS IS AVAILABLE ON REQUEST

U.S.G.S.  
FILE COPY  
Inspection and Editing

MEXICAN PASS SW, WYO.  
N4315-W10822.5/7.5  
1950

RETURN TO:  
USGS AND HISTORICAL MAP ARCHIVES