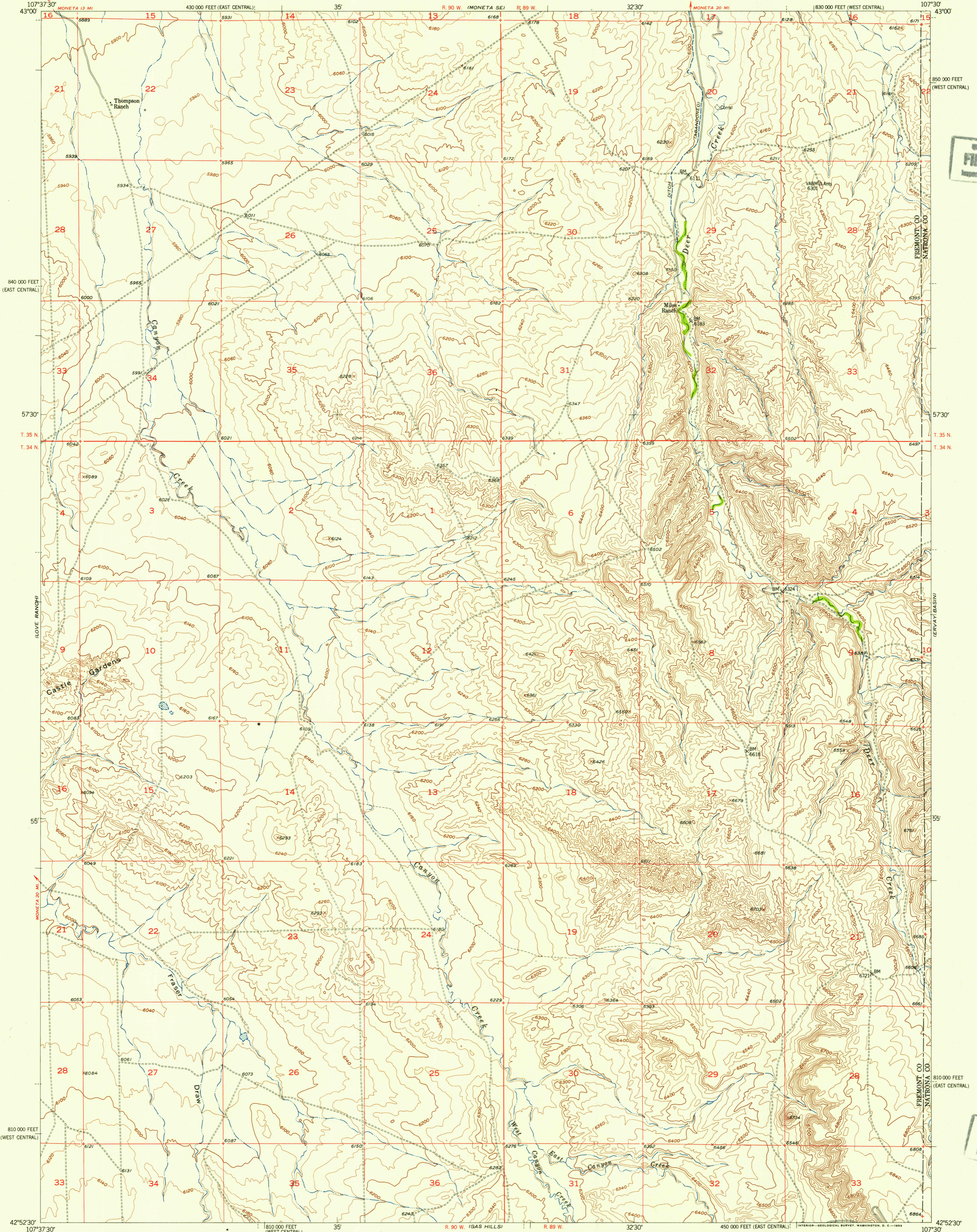


UNITED STATES
DEPARTMENT OF THE INTERIOR
GEOLOGICAL SURVEY

MILES RANCH QUADRANGLE
WYOMING
7.5 MINUTE SERIES (TOPOGRAPHIC)

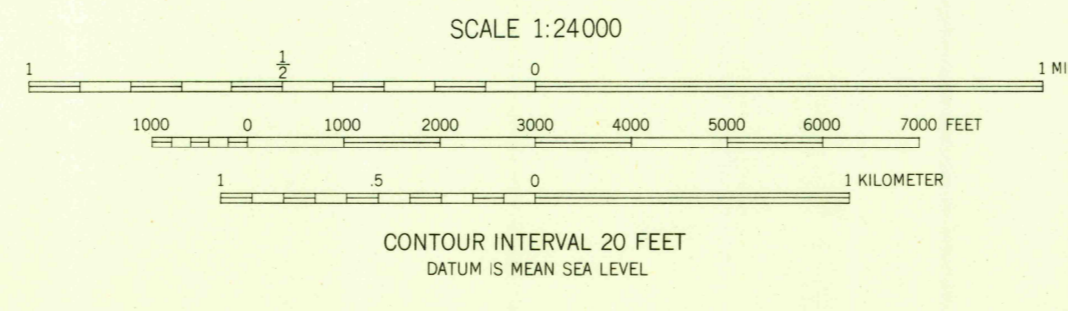


U.S.G.S.
FILE COPY
Inspection and Editing

RETURN TO:
USGS NHD HISTORICAL MAP ARCHIVES

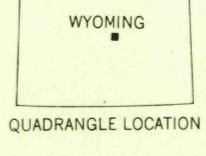
U.S.G.S.
FILE COPY
Inspection and Editing

Mapped, edited, and published by the Geological Survey as part of the Department of the Interior program for the development of the Missouri River Basin Control by USGS and USC&GS
Topography from aerial photographs by Kelsh Plotter methods
Aerial photographs taken 1949. Field check 1952
Polyconic projection. 1927 North American datum
10,000-foot grid based on Wyoming coordinate system, east central and west central zones



ROAD CLASSIFICATION

Heavy-duty	4 LANE 16 LANE	Light-duty
Medium-duty	4 LANE 16 LANE	Unimproved dirt
U. S. Route		State Route



MILES RANCH, WYO.
N4252.5—W10730.7.5
1952

THIS MAP COMPLIES WITH NATIONAL MAP ACCURACY STANDARDS
FOR SALE BY U. S. GEOLOGICAL SURVEY, FEDERAL CENTER, DENVER, COLORADO OR WASHINGTON 25, D. C.
A FOLDER DESCRIBING TOPOGRAPHIC MAPS AND SYMBOLS IS AVAILABLE ON REQUEST

JAN 20 1954