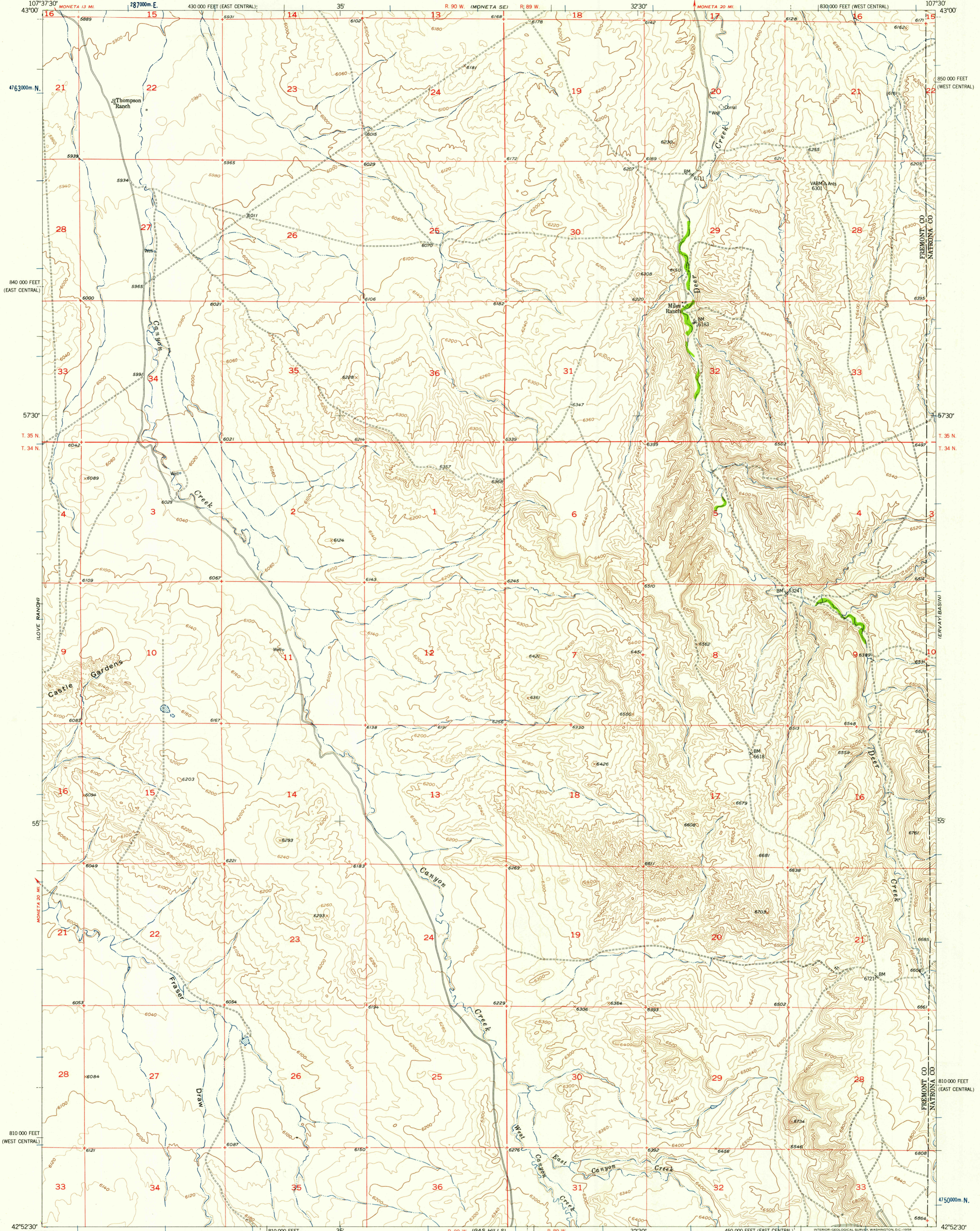
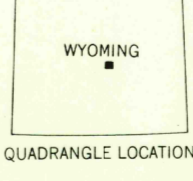
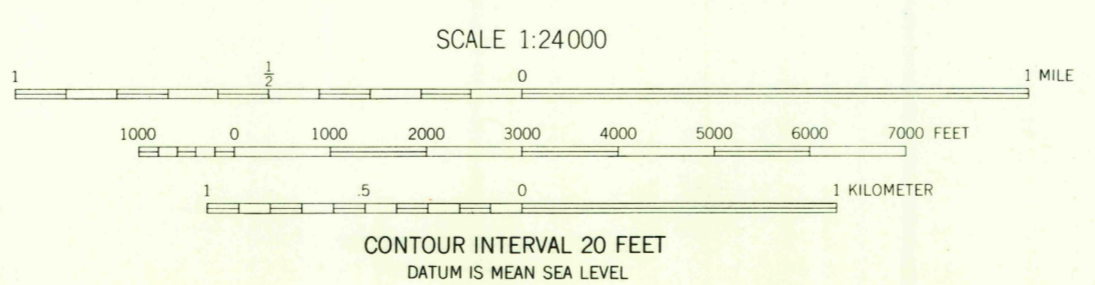
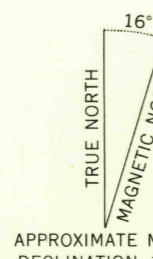


UNITED STATES
DEPARTMENT OF THE INTERIOR
GEOLOGICAL SURVEY

MILES RANCH QUADRANGLE
WYOMING
7.5 MINUTE SERIES (TOPOGRAPHIC)



Maped, edited, and published by the Geological Survey as part of the Department of the Interior program for the development of the Missouri River Basin. Control by USGS and USC&GS. Topography from aerial photographs by Kersh Plotter methods. Aerial photographs taken 1949. Field check 1952. Revised 1957. Polyconic projection. 1927 North American datum. 10,000-foot grid based on Wyoming coordinate system, east central and west central zones. 1000-meter Universal Transverse Mercator grid ticks, zone 12, shown in blue.



ROAD CLASSIFICATION
Light-duty ——— Unimproved dirt - - - - -

MILES RANCH, WYO.
N4252.5—W10730.7/5

FOR SALE BY U. S. GEOLOGICAL SURVEY, FEDERAL CENTER, DENVER, COLORADO OR WASHINGTON 25, D. C.
A FOLDER DESCRIBING TOPOGRAPHIC MAPS AND SYMBOLS IS AVAILABLE ON REQUEST

RETURN TO:
USGS AND HISTORICAL MAP ARCHIVES
U.S.G.S.
FILE COPY
TOPOGRAPHIC DIVISION
APR - 7 1958