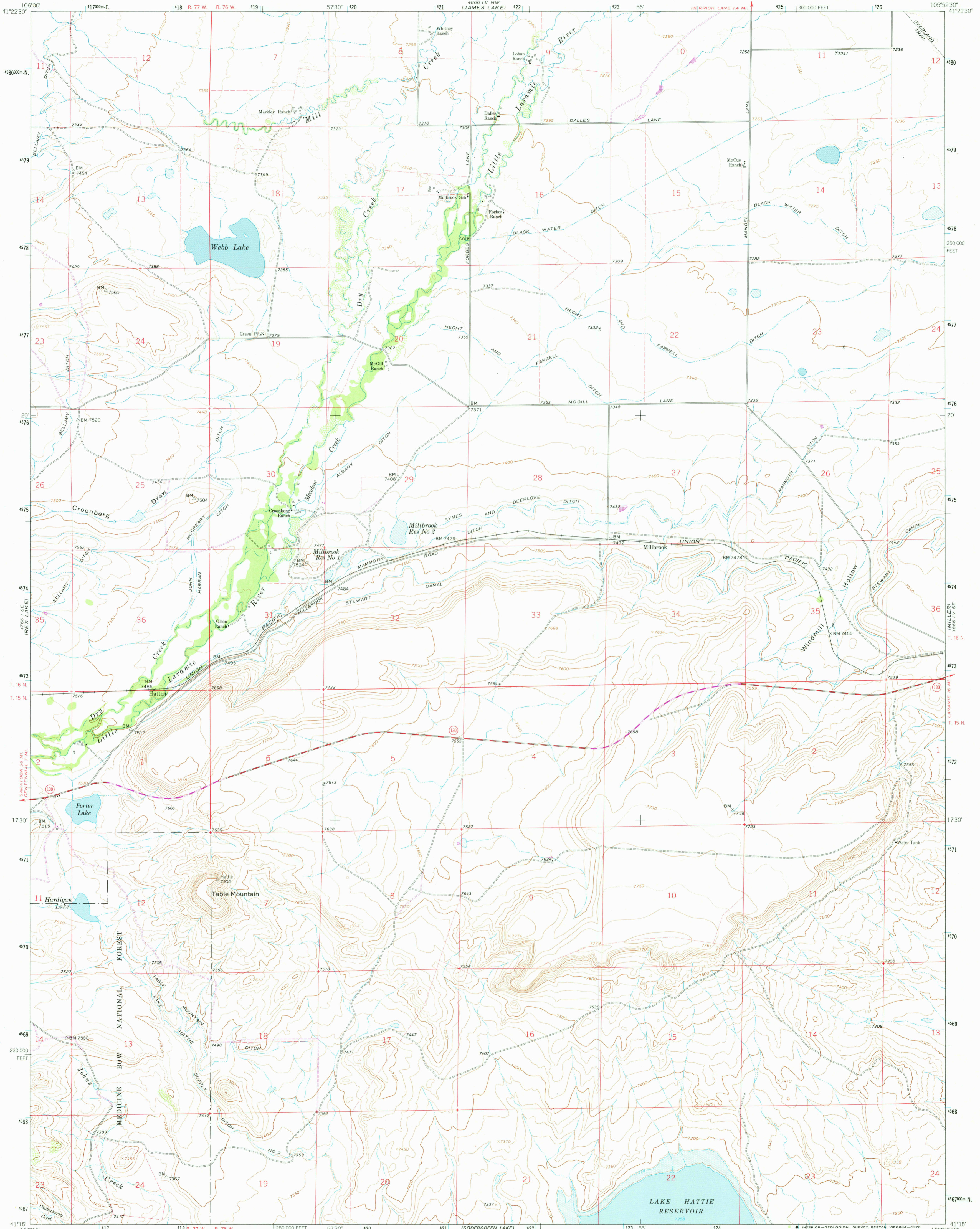


UNITED STATES
DEPARTMENT OF THE INTERIOR
GEOLOGICAL SURVEY

MILLBROOK QUADRANGLE
WYOMING-ALBANY CO.
7.5 MINUTE SERIES (TOPOGRAPHIC)



Mapped, edited, and published by the Geological Survey as part of the Department of the Interior program for the development of the Missouri River Basin Control by USGS, NOS/NOAA and Wyoming Geodetic Survey

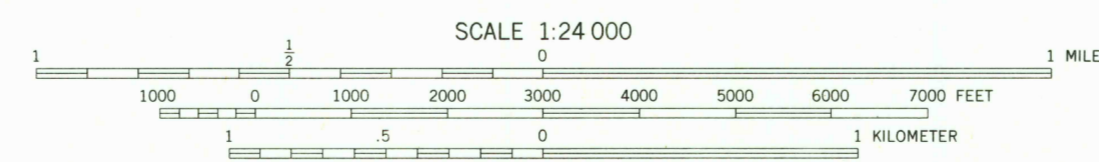
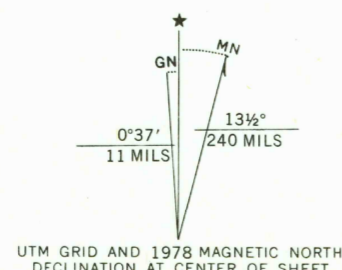
Topography by photogrammetric methods from aerial photographs taken 1961. Field checked 1962

Polyconic projection. 1927 North American datum. 10,000 foot grid based on Wyoming coordinate system, east zone 1000 meter Universal Transverse Mercator grid ticks, zone 13, shown in blue

Fine red dashed lines indicate selected fence and field lines

Area covered by dashed light blue pattern is subject to controlled inundation

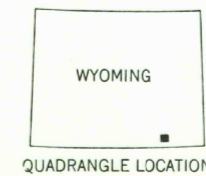
Revisions shown in purple compiled from aerial photographs taken 1976. Map edited 1978. This information not field checked



SCALE 1:24 000

CONTOUR INTERVAL 20 FEET
DOTTED LINES REPRESENT 10-FOOT CONTOURS
NATIONAL GEODETIC VERTICAL DATUM OF 1929

THIS MAP COMPLIES WITH NATIONAL MAP ACCURACY STANDARDS
FOR SALE BY U. S. GEOLOGICAL SURVEY, DENVER, COLORADO 80225, OR RESTON, VIRGINIA 22092
A FOLDER DESCRIBING TOPOGRAPHIC MAPS AND SYMBOLS IS AVAILABLE ON REQUEST



ROAD CLASSIFICATION

Medium-duty ——— Light-duty ———

Unimproved dirt ———

State Route ○

USGS
Historical File
Topographic Division

MILLBROOK, WYO.
N4115-W10552.5/7.5
1962
PHOTOREVISED 1978
AMS 4861 IV SW-SERIES V874

DEC 29 1978

RETURN TO:
USGS NHD HISTORICAL MAP ARCHIVES