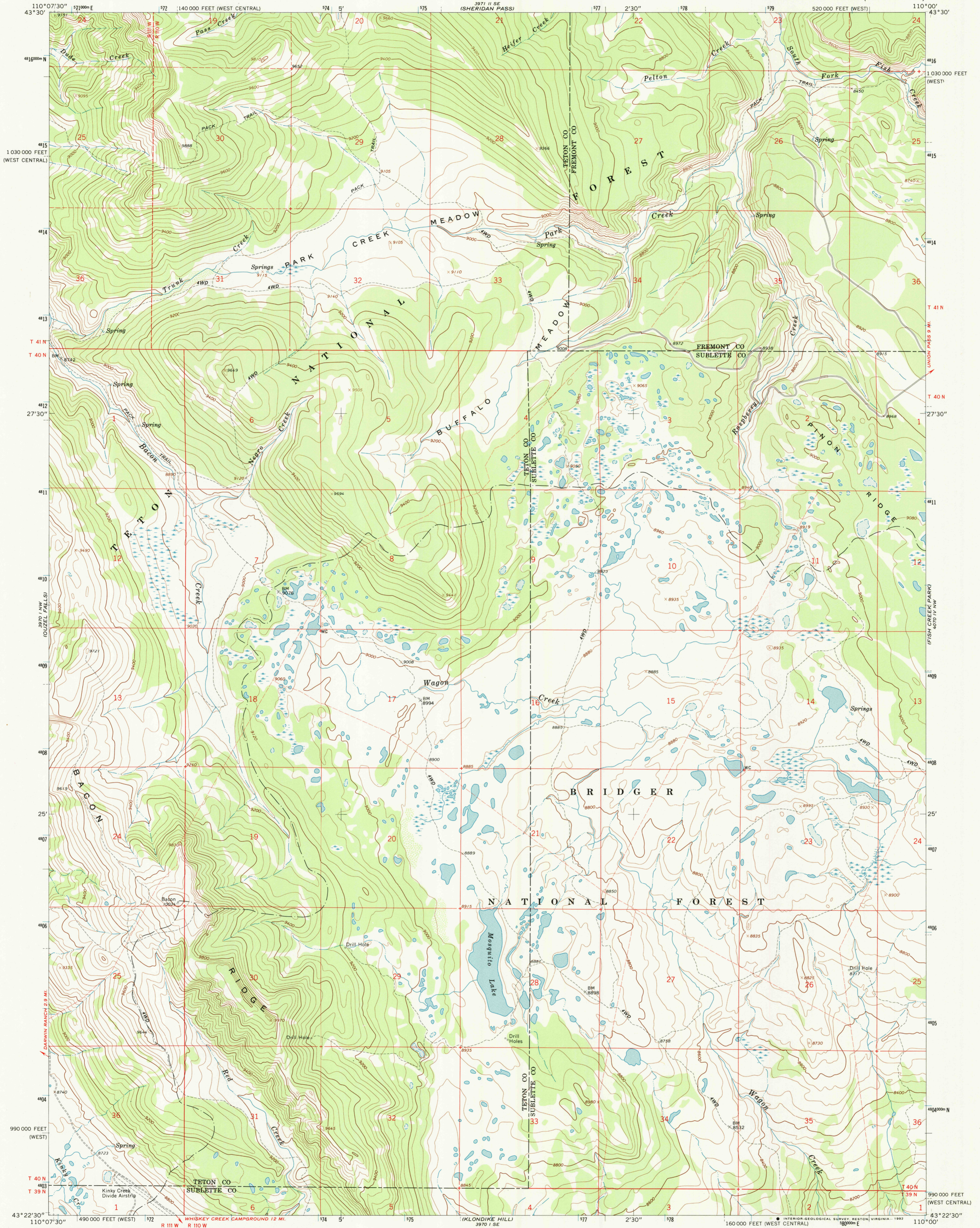


UNITED STATES
DEPARTMENT OF THE INTERIOR
GEOLOGICAL SURVEY

MOSQUITO LAKE QUADRANGLE
WYOMING
7.5 MINUTE SERIES (TOPOGRAPHIC)



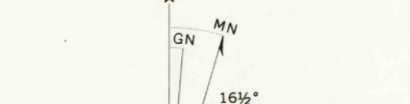
Mapped, edited, and published by the Geological Survey

Control by USGS and NOS/NOAA
Topography by photogrammetric methods from aerial photographs taken 1966. Field checked 1967

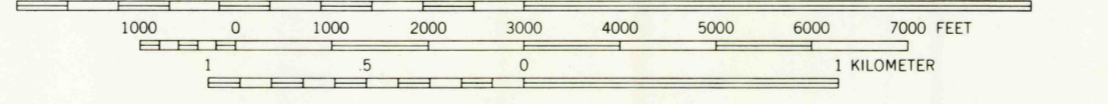
Polyconic projection. 1927 North American Datum
10,000-foot grid based on Wyoming coordinate system, west and west central zones
1000-meter Universal Transverse Mercator grid ticks, zone 12, shown in blue

The difference between 1927 North American Datum and North American Datum of 1983 (NAD 83) for 7.5 minute intersections is given in USGS Bulletin 1875. The NAD 83 is shown by dashed corner ticks

Fine red dashed lines indicate selected fence lines
There may be private inholdings within the boundaries of the National or State reservations shown on this map



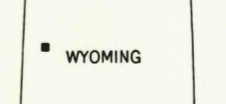
Map photinspected 1979
No major culture or drainage changes observed



CONTOUR INTERVAL 40 FEET
NATIONAL GEODETIC VERTICAL DATUM OF 1929

THIS MAP COMPLIES WITH NATIONAL MAP ACCURACY STANDARDS FOR SALE BY U.S. GEOLOGICAL SURVEY DENVER, COLORADO 80225, OR RESTON, VIRGINIA 22092

A FOLDER DESCRIBING TOPOGRAPHIC MAPS AND SYMBOLS IS AVAILABLE ON REQUEST



ROAD CLASSIFICATION
Light-duty ——— Unimproved dirt - - - - -

MOSQUITO LAKE, WYO.
43110-D1-TF-024

1967
PHOTOINSPECTED 1979
DMA 3970 1 NE - SERIES V874

