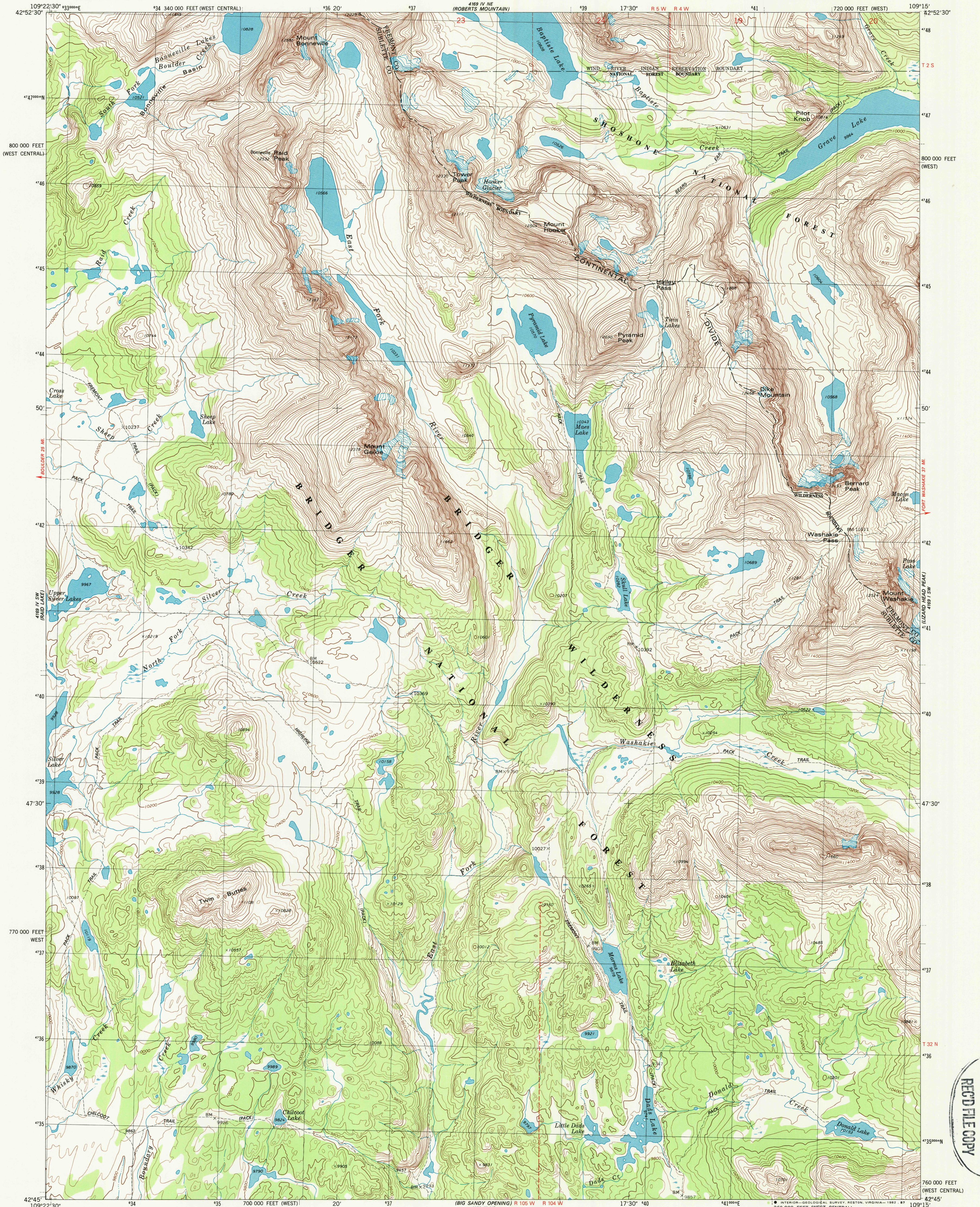
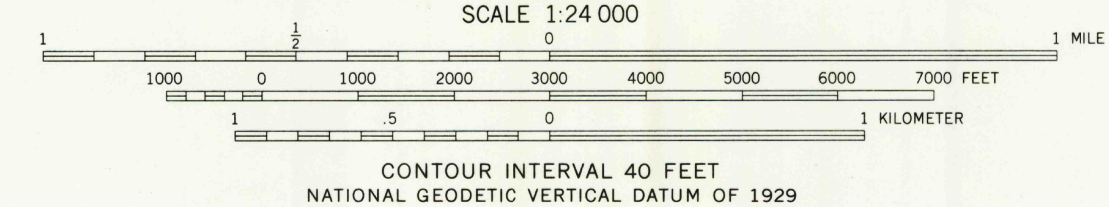
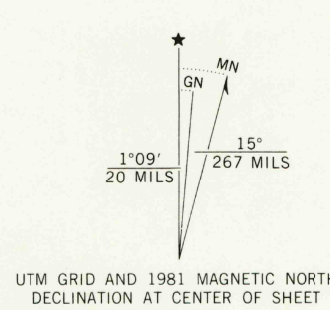


UNITED STATES
DEPARTMENT OF THE INTERIOR
GEOLOGICAL SURVEY

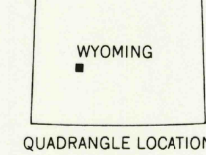
MOUNT BONNEVILLE QUADRANGLE
WYOMING
7.5 MINUTE SERIES (TOPOGRAPHIC)
SE 1/4 MT. BONNEVILLE 15' QUADRANGLE



Mapped, edited, and published by the Geological Survey
Control by USGS and NOS/NOAA
Topography by photogrammetric methods from aerial photographs
taken 1974. Field checked 1976. Map edited 1981
Projection: Wyoming coordinate system, west zone
(Transverse Mercator)
10,000-foot grid ticks based on Wyoming coordinate
system, west and west central zones
1000-meter Universal Transverse Mercator grid, zone 12
1927 North American datum
To place on the predicted North American Datum 1983
move the projection lines 10 meters north and
58 meters east as shown by dashed corner ticks
Where omitted, land lines have not been established
There may be private inholdings within the boundaries of the
National or State reservations shown on this map



CONTOUR INTERVAL 40 FEET
NATIONAL GEODETIC VERTICAL DATUM OF 1929



ROAD CLASSIFICATION
Primary highway, hard surface ——— Light-duty road, hard or improved surface ———
Secondary highway, hard surface ——— Unimproved road ———
Interstate Route ——— U. S. Route ——— State Route ———

MOUNT BONNEVILLE, WYO.
SE 1/4 MT. BONNEVILLE 15' QUADRANGLE
N4245-W10915/7.5

1981

DMA 4189 IV SE-SERIES V874

THIS MAP COMPLIES WITH NATIONAL MAP ACCURACY STANDARDS
FOR SALE BY U. S. GEOLOGICAL SURVEY, DENVER, COLORADO 80225, OR RESTON, VIRGINIA 22092
A FOLDER DESCRIBING TOPOGRAPHIC MAPS AND SYMBOLS IS AVAILABLE ON REQUEST

USGS WMD HISTORICAL MAP
MAR 07 1988
REC'D FILE COPY