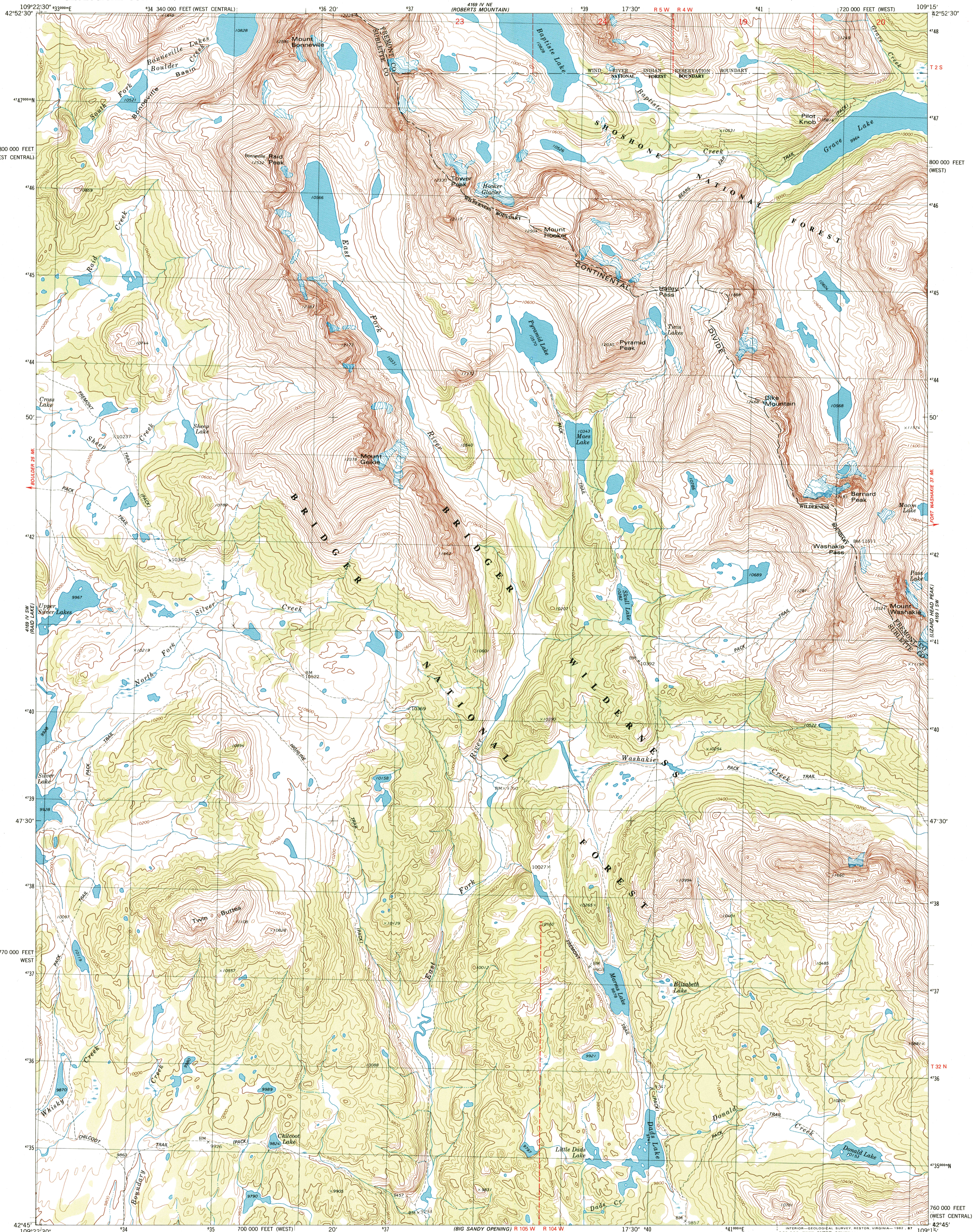
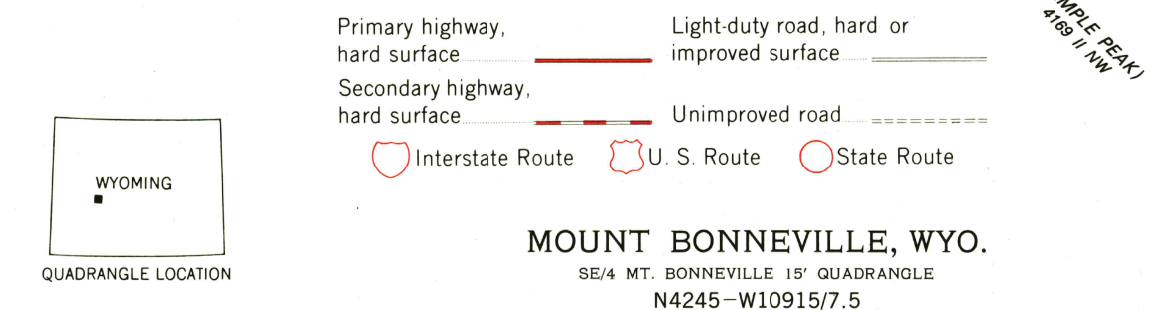
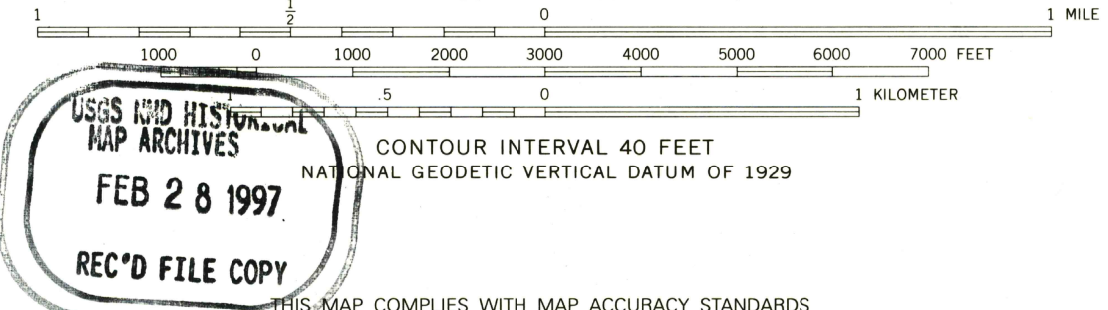
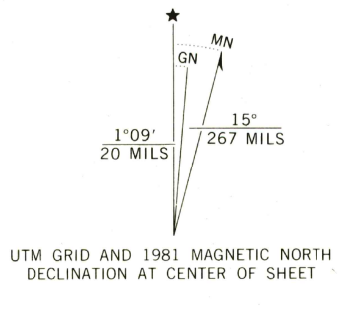


UNITED STATES  
DEPARTMENT OF THE INTERIOR  
GEOLOGICAL SURVEY

MOUNT BONNEVILLE QUADRANGLE  
WYOMING  
7.5 MINUTE SERIES (TOPOGRAPHIC)  
SE/4 MT. BONNEVILLE 15' QUADRANGLE



Mapped, edited, and published by the Geological Survey  
Control by USGS and NOS/NOAA  
Topography by photogrammetric methods from aerial photographs taken 1974. Field checked 1976. Map edited 1981  
Projection: Wyoming coordinate system, west zone (Transverse Mercator)  
10,000-foot grid ticks based on Wyoming coordinate system, west and west central zones  
1000-meter Universal Transverse Mercator grid, zone 12 1927 North American datum  
To place on the predicted North American Datum 1983 move the projection lines 10 meters north and 58 meters east as shown by dashed corner ticks  
Where omitted, land lines have not been established  
There may be private inholdings within the boundaries of the National or State reservations shown on this map



MOUNT BONNEVILLE, WYO.  
SE/4 MT. BONNEVILLE 15' QUADRANGLE  
N4245-W10915/7.5  
1981  
DMA 4169 IV SE-SERIES 87/4

