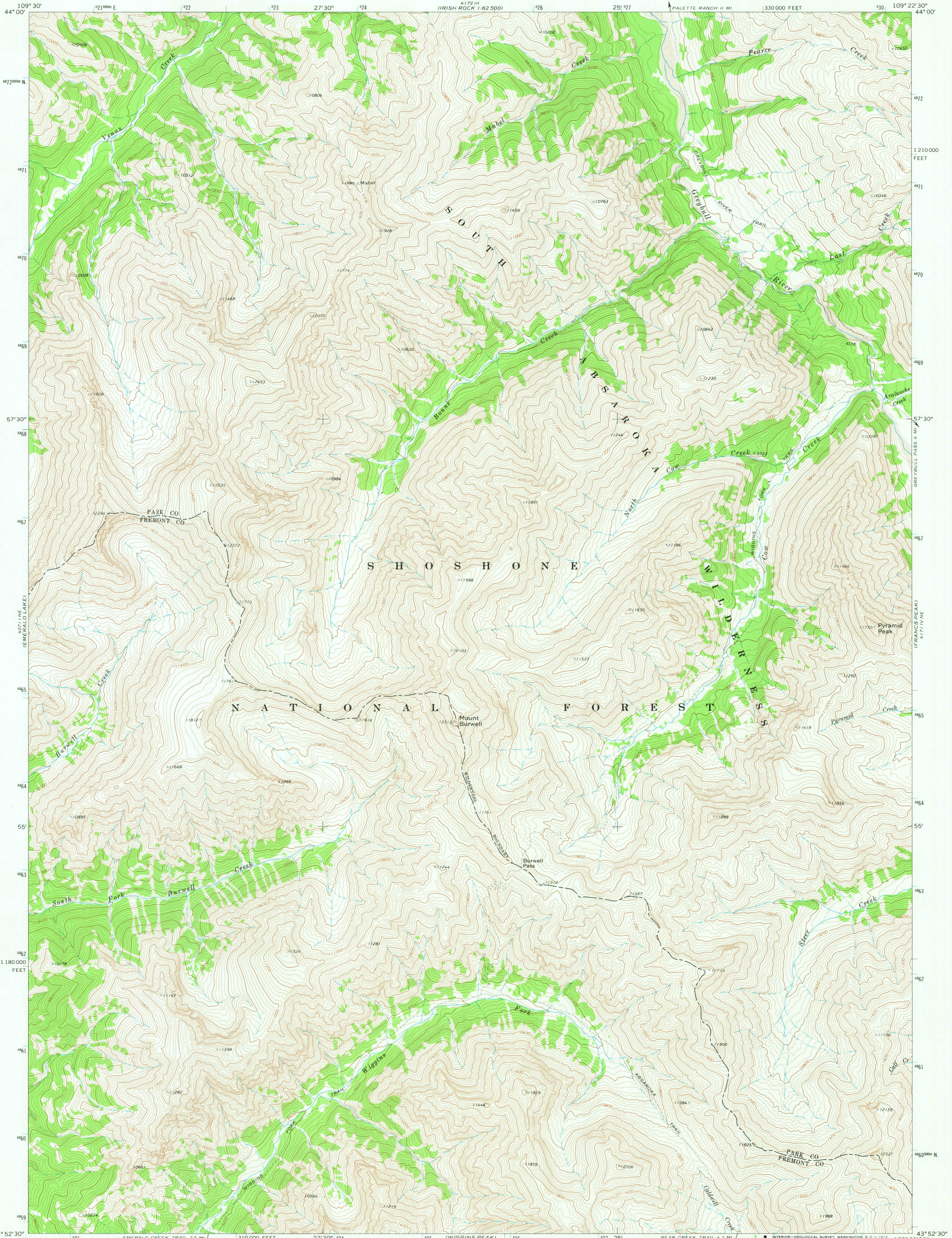
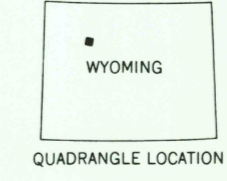
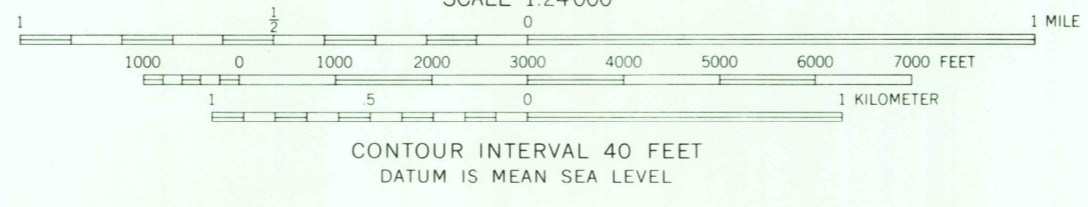
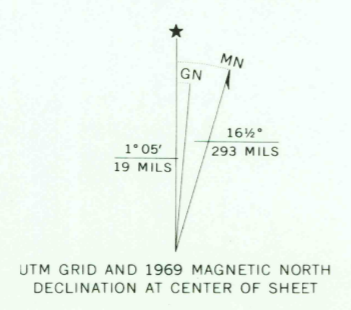


IRISH ROCK 1:62,500



Maped by the U. S. Forest Service
Edited and published by the Geological Survey
Control by USGS, USC&GS, and U. S. Forest Service
Topography by photogrammetric methods from aerial
photographs taken 1954-1955. Field checked by USGS 1969
Polyconic projection. 1927 North American datum
10,000-foot grid based on Wyoming coordinate system,
west central zone
1000 meter Universal Transverse Mercator grid ticks,
zone 12, shown in blue
Land lines have not been established or are not shown
because of insufficient data



ROAD CLASSIFICATION
Trails

THIS MAP COMPLIES WITH NATIONAL MAP ACCURACY STANDARDS
FOR SALE BY U. S. GEOLOGICAL SURVEY, DENVER, COLORADO 80225, OR WASHINGTON, D. C. 20242
A FOLDER DESCRIBING TOPOGRAPHIC MAPS AND SYMBOLS IS AVAILABLE ON REQUEST

MOUNT BURWELL, WYO.
N4352.5-W10922.5/7.5
1969
AMS 4171 IV NW-SERIES V874

OCT 29 1981

1600

RETURN TO:
USGS MAP HISTORICAL MAP ARCHIVES