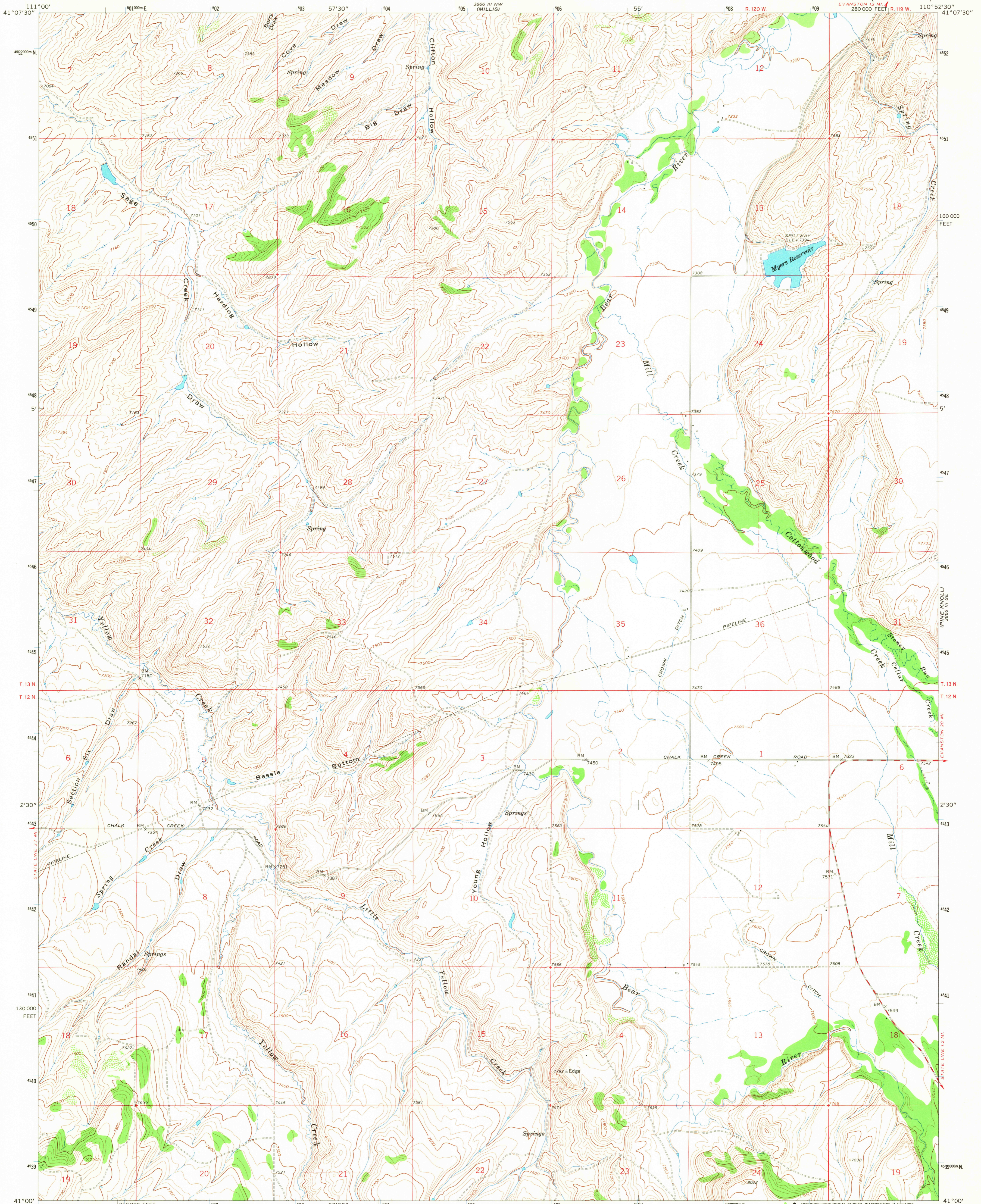
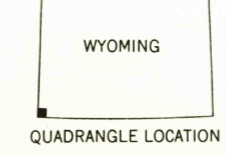
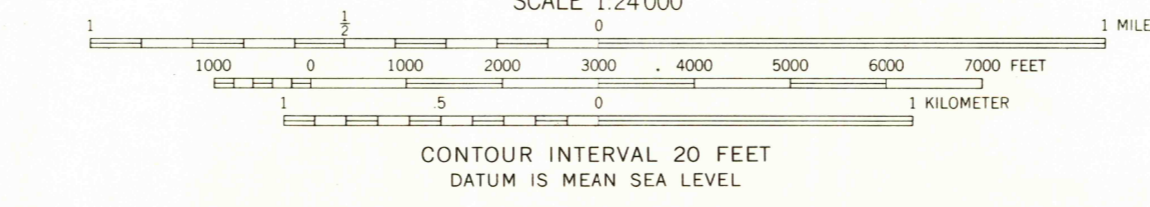
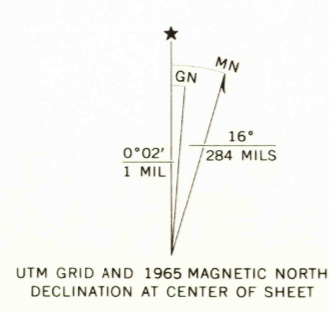


3866 III SW
(SULPHUR CREEK
RESERVOIR)



Mapped, edited, and published by the Geological Survey
Control by USGS and USC&GS
Topography by photogrammetric methods from aerial
photographs taken 1964. Field checked 1965
Polyconic projection. 1927 North American datum
10,000 foot grid based on Wyoming coordinate system,
west zone
1000-meter Universal Transverse Mercator grid ticks,
zone 12, shown in blue
Fine red dashed lines indicate selected fence lines



ROAD CLASSIFICATION
Medium-duty ——— Light-duty ———
Unimproved dirt - - - - -

THIS MAP COMPLIES WITH NATIONAL MAP ACCURACY STANDARDS
FOR SALE BY U. S. GEOLOGICAL SURVEY, DENVER, COLORADO 80225, OR WASHINGTON, D. C. 20242
A FOLDER DESCRIBING TOPOGRAPHIC MAPS AND SYMBOLS IS AVAILABLE ON REQUEST

MYERS RESERVOIR, WYO.
N4100—W11052.5/7.5

1965

AMS 3866 III SW—SERIES V874

RETURN TO:
USGS HISTORICAL MAP ARCHIVES

U.S.G.S.
FILE COPY
TOPOGRAPHIC DIVISION

1505
SEP 4 1968