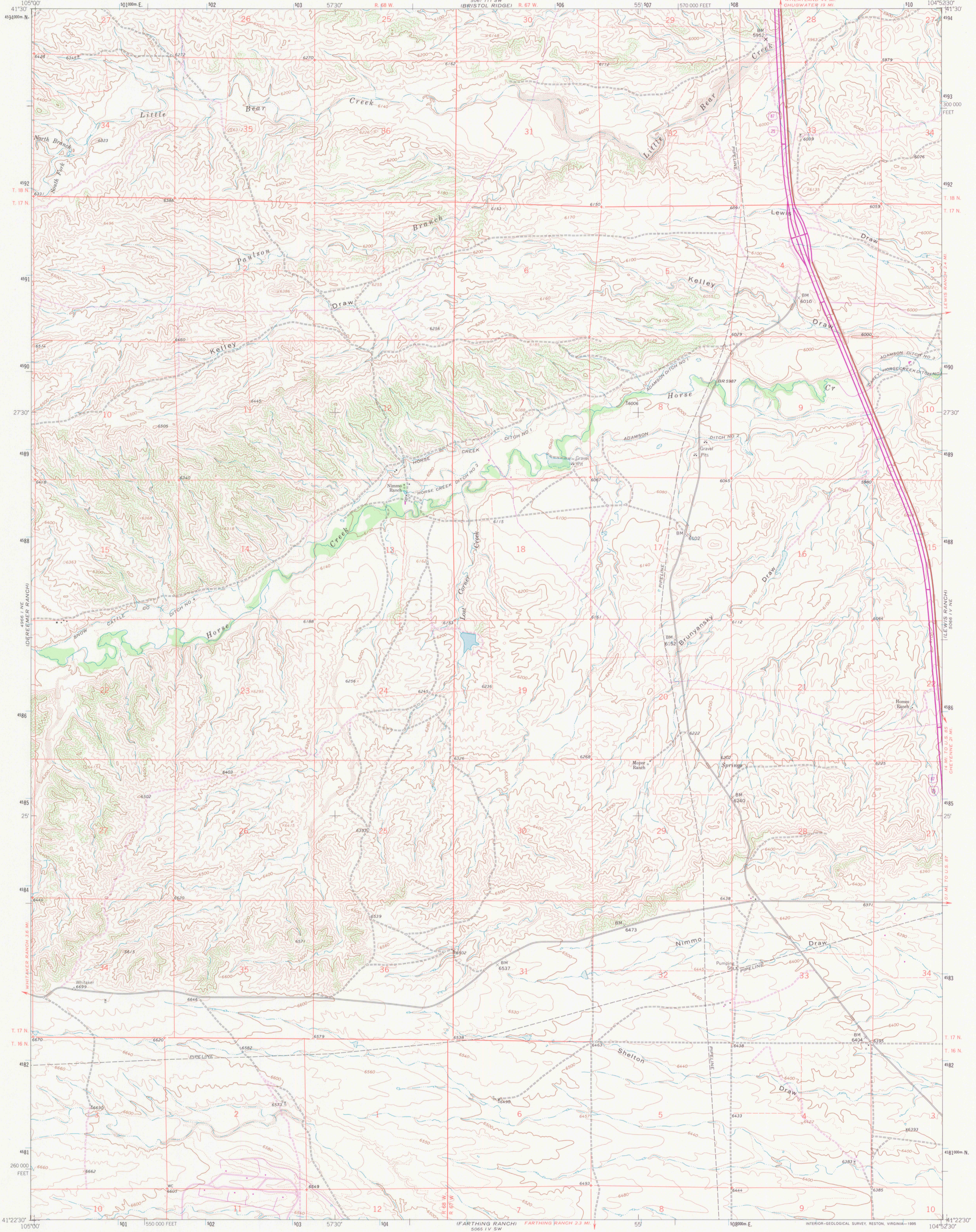


UNITED STATES
DEPARTMENT OF THE INTERIOR
GEOLOGICAL SURVEY

NIMMO RANCH QUADRANGLE
WYOMING-LARAMIE CO.
7.5 MINUTE SERIES (TOPOGRAPHIC)



Produced by the United States Geological Survey

Control by USGS and NOS/NOAA

Compiled from imagery taken 1961. Photoinspected using imagery dated 1991; no major culture or drainage changes observed. PLS and survey control current as of 1962. Names verified 1994.

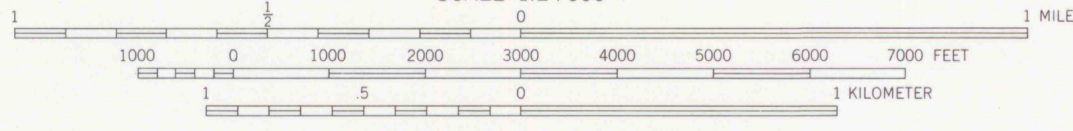
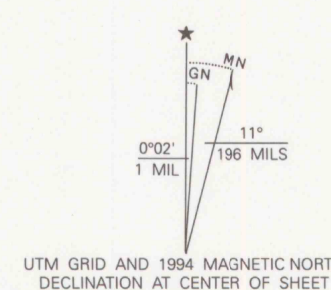
North American Datum of (NAD 27). Projection and 10000-foot ticks: Wyoming Coordinate System, east zone (Transverse Mercator)

Blue 1000-meter Universal Transverse Mercator ticks, zone 13

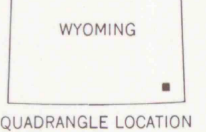
North American Datum of 1983 (NAD 83) is shown by dashed corner ticks. The values of the shift between NAD 27 and NAD 83 for 7.5-minute intersections are obtainable from National Geodetic Survey NADCON software

Fine red dashed lines indicate selected fence lines

Revisions shown in purple and woodland compiled from aerial photographs taken 1976 and other source data. This information not field checked. Map edited 1978



SCALE 1:24,000
CONTOUR INTERVAL 20 FEET
SUPPLEMENTARY CONTOUR INTERVAL 10 FEET
NATIONAL GEODETIC VERTICAL DATUM OF 1929



ROAD CLASSIFICATION

Primary highway, all weather, hard surface	Light-duty road, all weather, improved surface
Secondary highway, all weather, hard surface	Unimproved road, fair or dry weather
Interstate Route	U. S. Route
	State Route

THIS MAP COMPLIES WITH NATIONAL MAP ACCURACY STANDARDS
FOR SALE BY U.S. GEOLOGICAL SURVEY
DENVER, COLORADO 80225, OR RESTON, VIRGINIA 22092
A FOLDER DESCRIBING TOPOGRAPHIC MAPS AND SYMBOLS IS AVAILABLE ON REQUEST

NIMMO RANCH, WY
41104-D8-TF-024

1991

DMA 5066 IV NE-SERIES V874