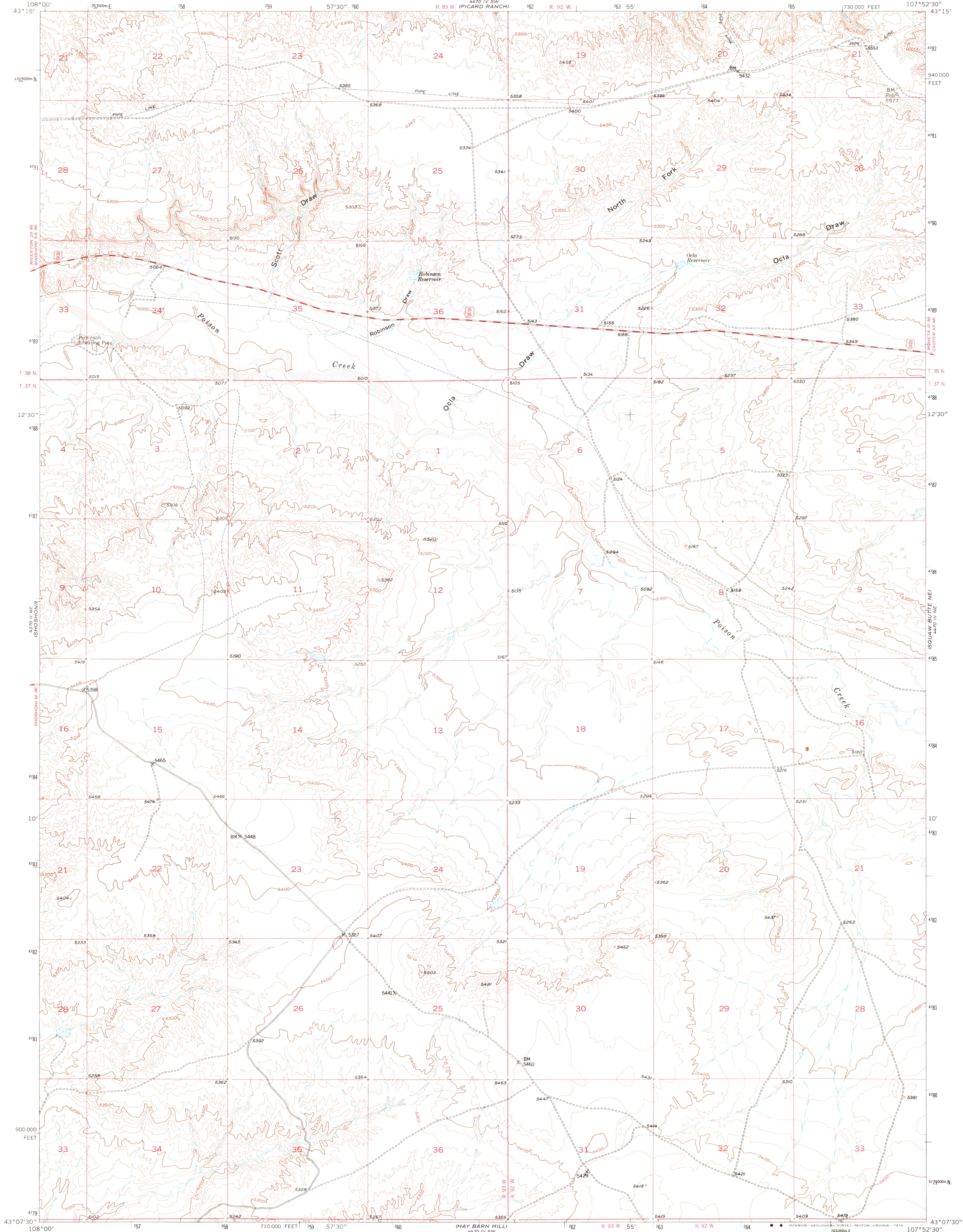


UNITED STATES
DEPARTMENT OF THE INTERIOR
GEOLOGICAL SURVEY

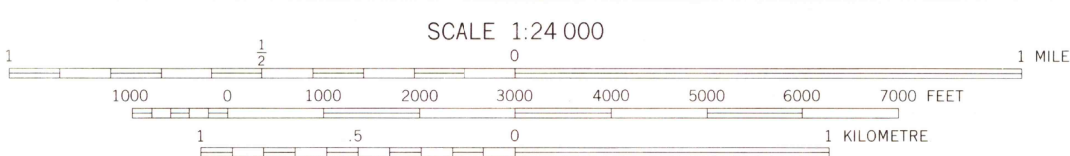
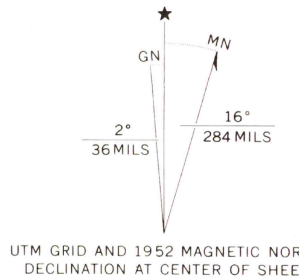
OCLA DRAW QUADRANGLE
WYOMING—FREEMONT CO.
7.5 MINUTE SERIES (TOPOGRAPHIC)



Mapped, edited, and published by the Geological Survey
as part of the Department of the Interior program
for the development of the Missouri River Basin
Control by USGS and USC&GS

Topography from aerial photographs by multiplex methods
Aerial photographs taken 1949. Field check 1952

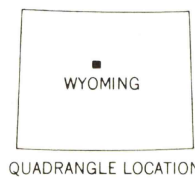
Polycyclic projection. 1927 North American datum
10,000-foot grid based on Wyoming coordinate system,
west central zone
1000-metre Universal Transverse Mercator grid ticks,
zone 13, shown in blue



NATIONAL GEODETIC VERTICAL DATUM OF 1929

THIS MAP COMPLIES WITH NATIONAL MAP ACCURACY STANDARDS
FOR SALE BY U.S. GEOLOGICAL SURVEY, DENVER, COLORADO 80225, OR RESTON, VIRGINIA 22092
A FOLDER DESCRIBING TOPOGRAPHIC MAPS AND SYMBOLS IS AVAILABLE ON REQUEST

ROAD CLASSIFICATION
Heavy-duty 4 LANE 16 LANE Light-duty
Medium-duty 4 LANE 16 LANE Unimproved dirt
U.S. Route State Route



USGS
Historical File
Topographic Division

OCLA DRAW, WYO.
N4307.5—W10752.5/7.5

1952
AMS 4470 III NW—SERIES V874