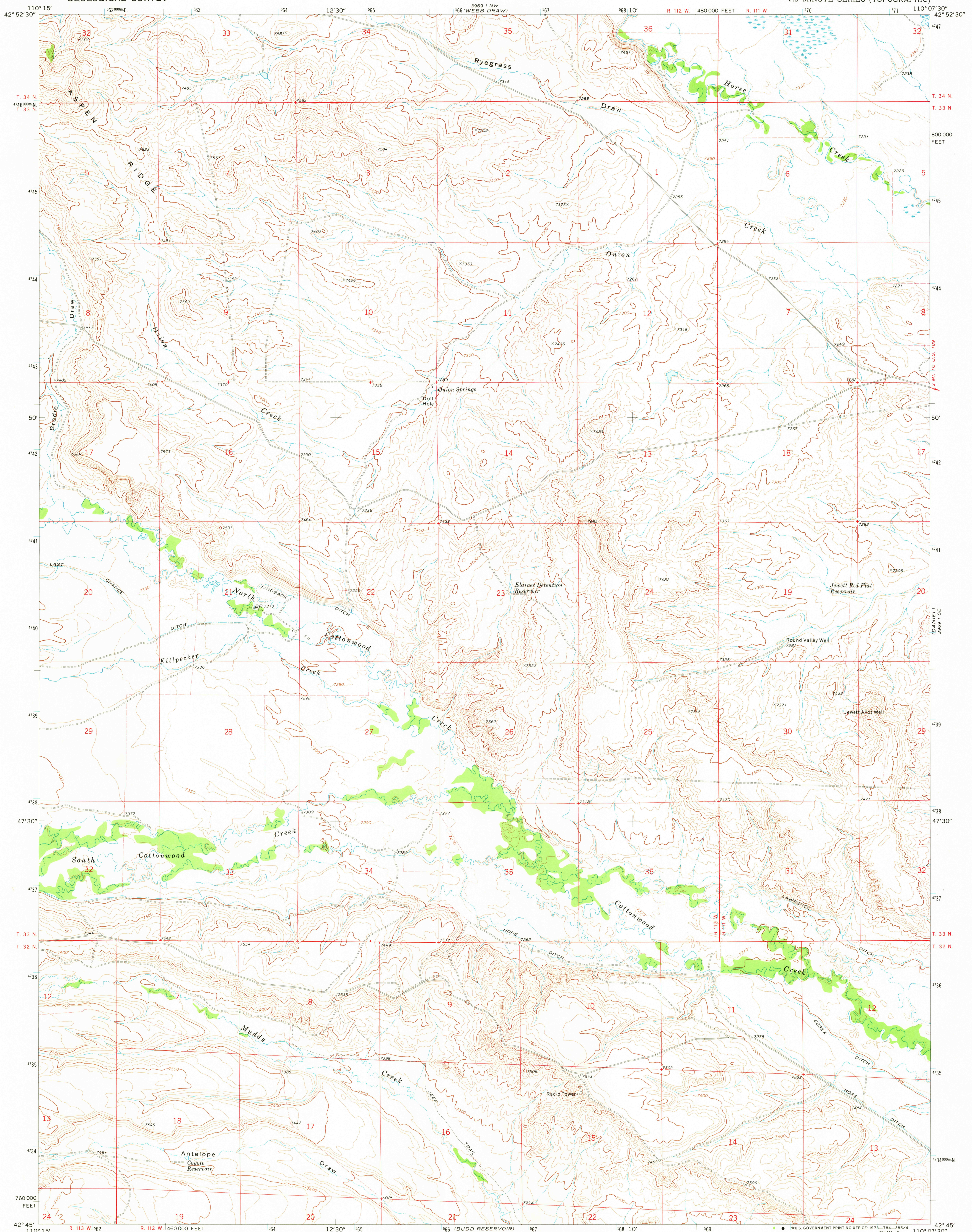


ONION SPRINGS QUADRANGLE
WYOMING—SUBLETTE CO.
7.5 MINUTE SERIES (TOPOGRAPHIC)

110° 15' 42° 52' 30" 110° 07' 30" 480,000 FEET 480,100 FEET 3669 NW (WEBB DRAW) R. 112 W. R. 111 W. 42° 52' 30" 42° 52' 30"



Mapped, edited, and published by the Geological Survey

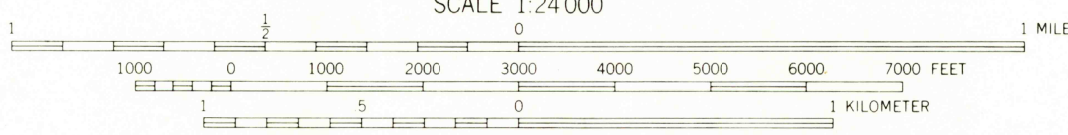
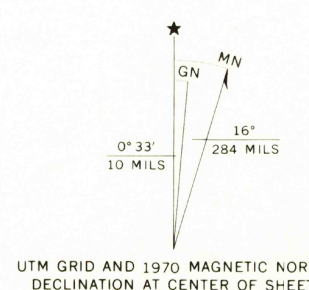
Control by USGS and USC&GS

Topography by photogrammetric methods from aerial photographs taken 1969. Field checked 1970

Polyconic projection. 1927 North American datum
10,000-foot grid based on Wyoming coordinate system,
west zone

Fine red dashed lines indicate selected fence lines

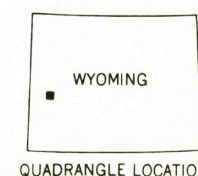
Fine red dashed lines indicate selected fence lines



CONTOUR INTERVAL 20 FEET
DOTTED LINES REPRESENT 10-FOOT CONTOURS
DATUM IS MEAN SEA LEVEL

THIS MAP COMPLIES WITH NATIONAL MAP ACCURACY STANDARDS

THIS MAP COMPLIES WITH NATIONAL MAP ACCURACY STANDARDS
FOR SALE BY U. S. GEOLOGICAL SURVEY, DENVER, COLORADO 80225, OR WASHINGTON, D. C. 20242
A FOLDER DESCRIBING TOPOGRAPHIC MAPS AND SYMBOLS IS AVAILABLE ON REQUEST



QUADRANGLE LOCATION

ROAD CLASSIFICATION

Primary highway, hard surface _____
Secondary highway, hard surface _____
Light-duty road, hard or improved surface _____
Unimproved road _____

 Improved Road
 Unimproved Road
 Interstate Route
 U. S. Route
 State Route

157-103
Criminal File
to Division

AUG 16 1973

ONION SPRINGS, WYO

N4245—W11007.5/7.5

1970

AMS 3969 I SW-SERIES V874