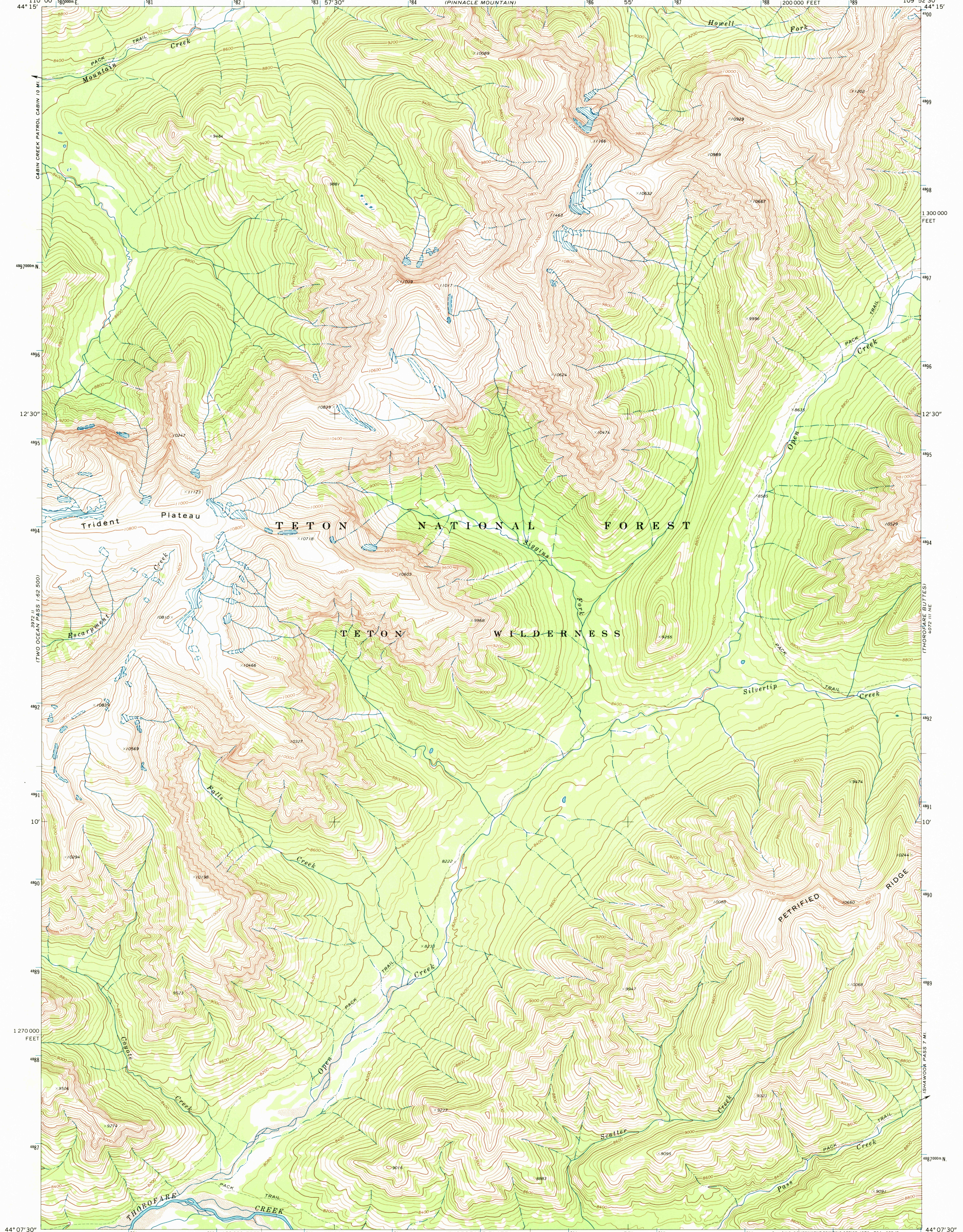


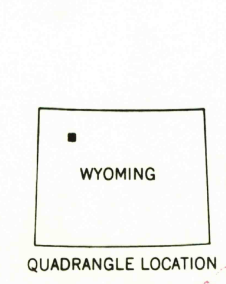
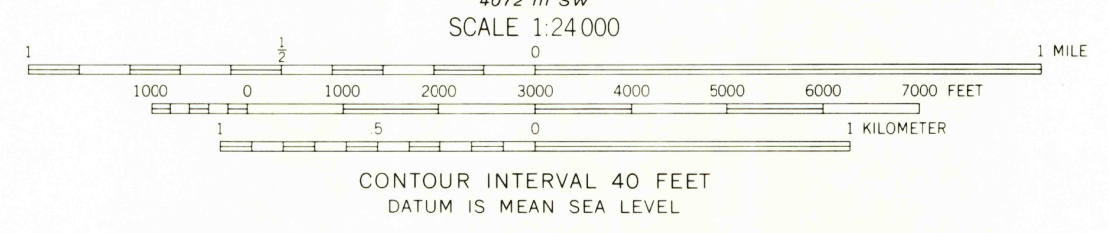
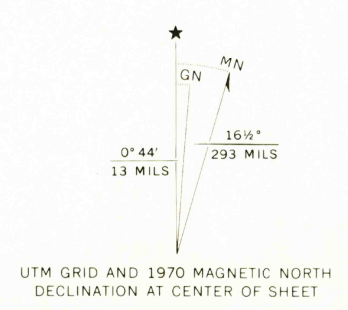
3972 IV SW  
(LEAF 1,62 500)

3972 IV SW  
(SHEEP MESA)



3972 IV SW  
(TWO OCEAN PASS 1,62 500)

Mapped, edited, and published by the Geological Survey  
Control by USGS and USC&GS  
Topography by photogrammetric methods from aerial photographs taken 1969. Field checked 1970  
Polyconic projection. 1927 North American datum 10,000-foot grid based on Wyoming coordinate system, west central zone  
1000-meter Universal Transverse Mercator grid ticks, zone 12, shown in blue  
Land lines have not been established in this area



ROAD CLASSIFICATION  
Trails

OCT 2 1973

OPEN CREEK, WYO.  
N4407.5—W10952.5/7.5  
1970

THIS MAP COMPLIES WITH NATIONAL MAP ACCURACY STANDARDS  
FOR SALE BY U.S. GEOLOGICAL SURVEY, DENVER, COLORADO 80225, OR WASHINGTON, D.C. 20242  
A FOLDER DESCRIBING TOPOGRAPHIC MAPS AND SYMBOLS IS AVAILABLE ON REQUEST

AMS 4072 III NW—SERIES V874

RETURN TO:  
USGS MAP HISTORICAL MAP ARCHIVES

Dingerson  
2500