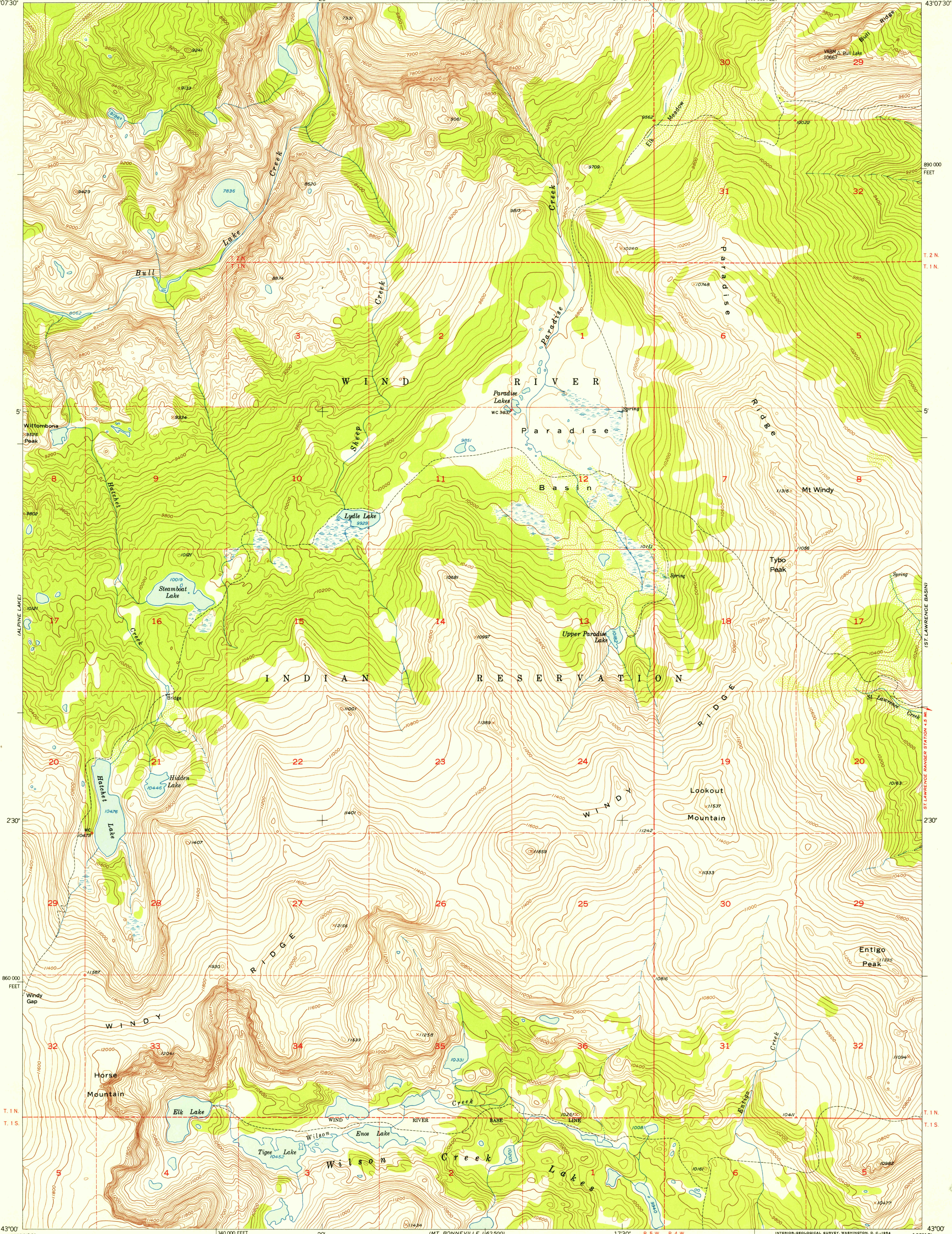
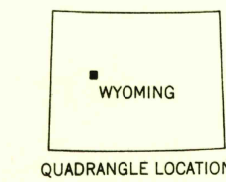
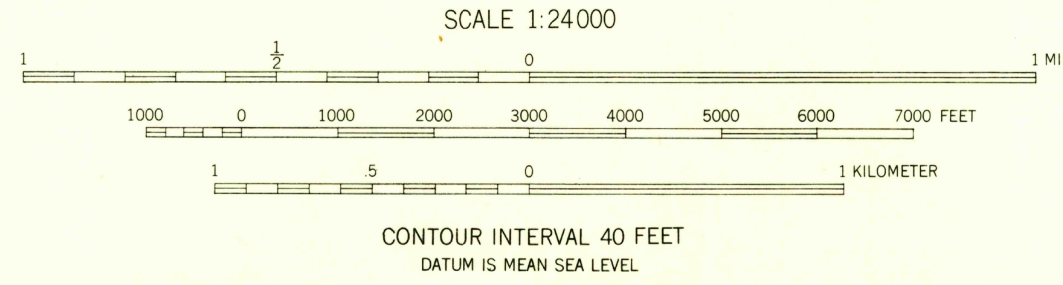


109°22'30" 20 1730' R.5 W. R.4 W. 360 000 FEET 109°15' 43°07'30" 890 000 FEET



Mapped, edited, and published by the Geological Survey as part of the Department of the Interior program for the development of the Missouri River Basin Control by USGS and USC&GS  
Topography from aerial photographs by multiplex methods  
Aerial photographs taken 1949. Field check 1952  
Polyconic projection. 1927 North American datum  
10,000 foot grid based on Wyoming coordinate system, west central zone  
Dashed land lines indicate approximate locations  
Land lines unsurveyed in T. 2 N. - R. 5 W. and in part of T. 1 N. - R. 5 W.

TRUE NORTH  
MAGNETIC NORTH  
APPROXIMATE MEAN DECLINATION, 1952



ROAD CLASSIFICATION

Heavy-duty	4 LANE 16 LANE	Light-duty
Medium-duty	4 LANE 16 LANE	Unimproved dirt
U.S. Route		State Route

PARADISE BASIN, WYO.  
N4300-W10915/7.5

1952

THIS MAP COMPLIES WITH NATIONAL MAP ACCURACY STANDARDS  
FOR SALE BY U. S. GEOLOGICAL SURVEY, FEDERAL CENTER, DENVER, COLORADO OR WASHINGTON 25, D. C.  
A FOLDER DESCRIBING TOPOGRAPHIC MAPS AND SYMBOLS IS AVAILABLE ON REQUEST

FILE COPY  
Geological Survey

FILE COPY  
Geological Survey

JUN 26 1954