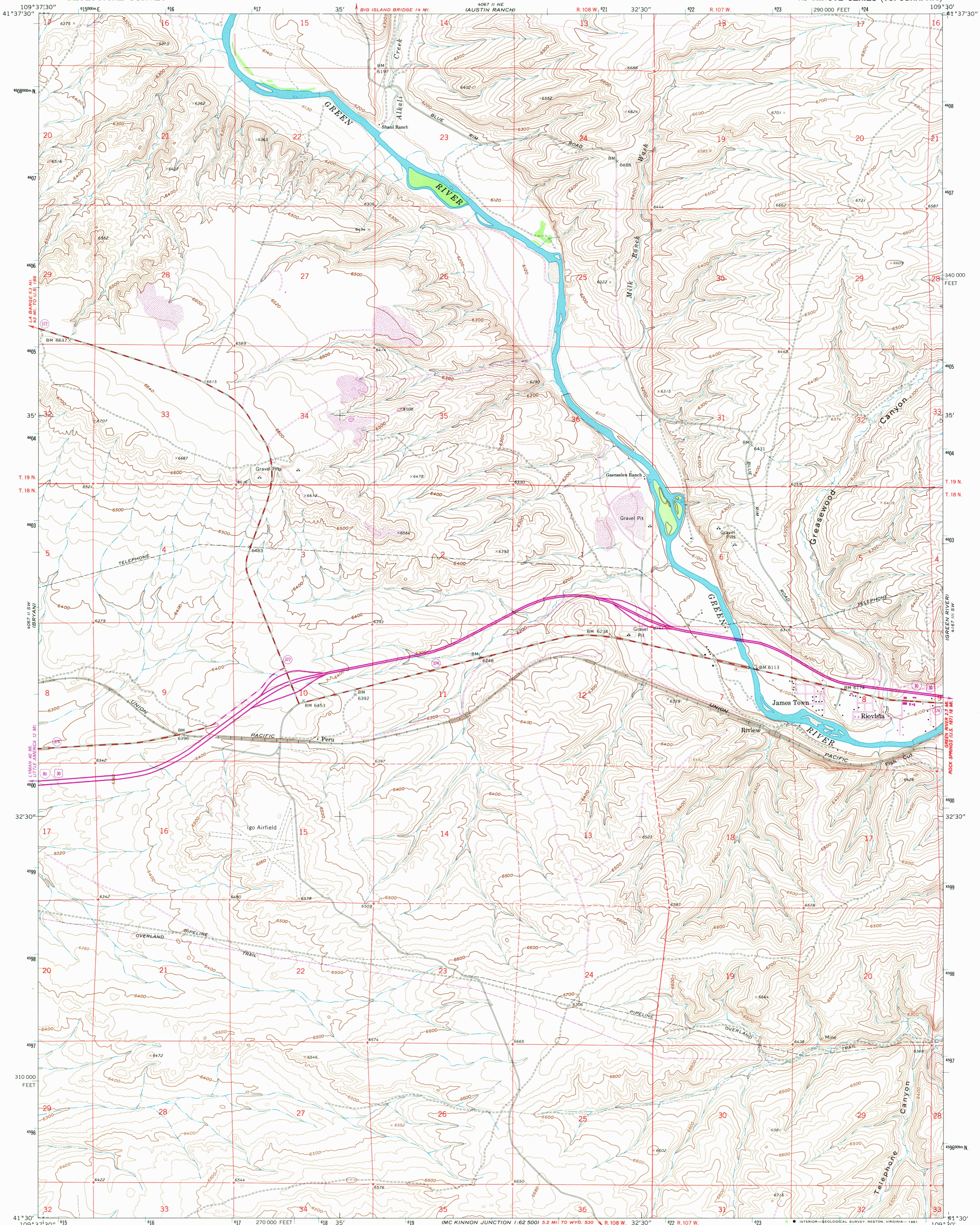
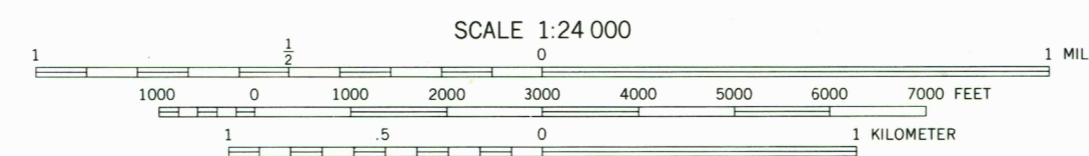
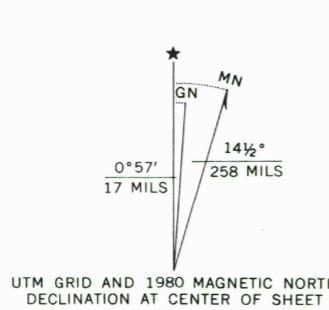


UNITED STATES  
DEPARTMENT OF THE INTERIOR  
GEOLOGICAL SURVEY

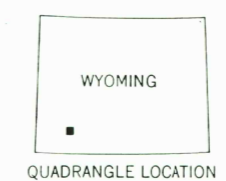
PERU QUADRANGLE  
WYOMING—SWEETWATER CO.  
7.5 MINUTE SERIES (TOPOGRAPHIC)



Mapped, edited, and published by the Geological Survey  
Control by USGS and NOS/NOAA  
Topography by photogrammetric methods from aerial photographs taken 1956. Field checked 1961  
Polyconic projection. 1927 North American datum 10,000-foot grid based on Wyoming coordinate system, west central zone  
1000-meter Universal Transverse Mercator grid ticks, zone 12, shown in blue  
To place on the predicted North American Datum 1983 move the projection lines 9 meters north and 59 meters east as shown by dashed corner ticks  
Revisions shown in purple compiled from aerial photographs taken 1977 and other source data. This information not field checked. Map edited 1980



CONTOUR INTERVAL 20 FEET  
DOTTED LINES REPRESENT 10-FOOT CONTOURS  
NATIONAL GEODETIC VERTICAL DATUM OF 1929



ROAD CLASSIFICATION  
Heavy-duty ——— Light-duty ———  
Medium-duty ——— Unimproved dirt ———  
Interstate Route U.S. Route State Route

PERU, WYO.  
N4130—W10930/7.5

1961  
PHOTOREVISED 1980  
DMA 4067 II SE—SERIES V874

THIS MAP COMPLIES WITH NATIONAL MAP ACCURACY STANDARDS  
FOR SALE BY U. S. GEOLOGICAL SURVEY, DENVER, COLORADO 80225, OR RESTON, VIRGINIA 22092  
A FOLDER DESCRIBING TOPOGRAPHIC MAPS AND SYMBOLS IS AVAILABLE ON REQUEST

RETURN TO:  
USGS AND HISTORICAL MAP ARCHIVES

1952