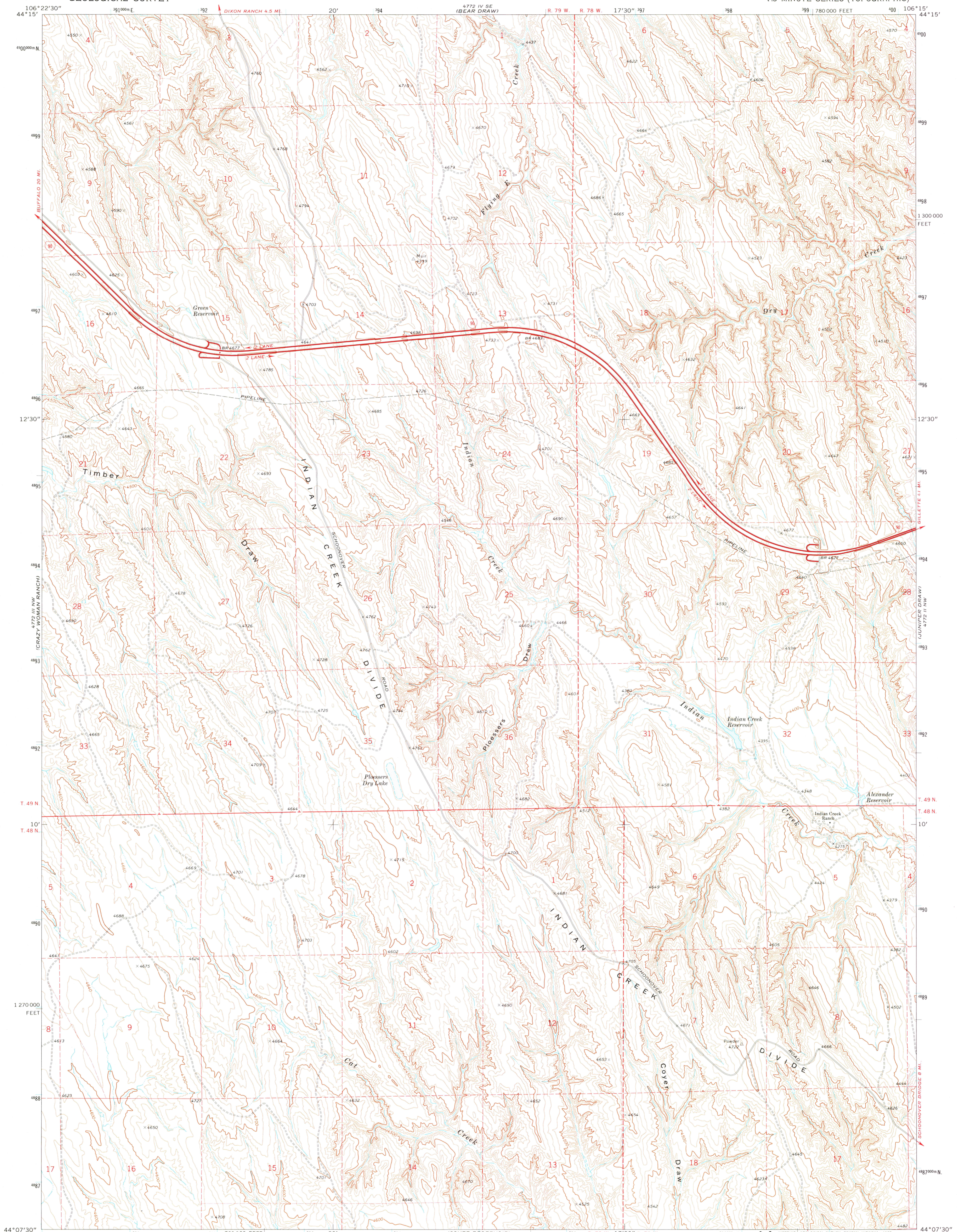


UNITED STATES
DEPARTMENT OF THE INTERIOR
GEOLOGICAL SURVEY

PLOESSERS DRAW QUADRANGLE
WYOMING—JOHNSON CO.
7.5 MINUTE SERIES (TOPOGRAPHIC)

4772 IV SE
4772 IV SW
4772 IV SW
4772 IV SW

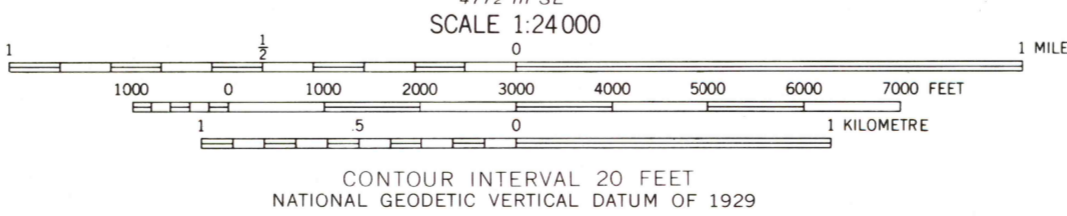
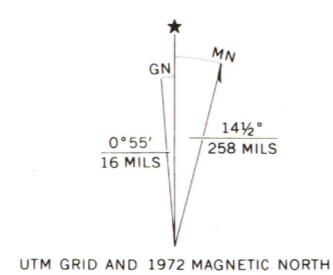


Mapped, edited, and published by the Geological Survey as part of the Department of the Interior program for the development of the Missouri River Basin Control by USGS and NOS/NOAA

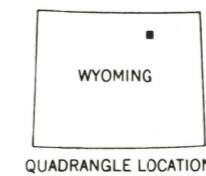
Topography by photogrammetric methods from aerial photographs taken 1970. Field checked 1972

Projection and 10,000-foot grid ticks: Wyoming coordinate system, east central zone (Transverse Mercator) 1,000-metre Universal Transverse Mercator grid ticks, zone 13, shown in blue. 1927 North American datum

Fine red dashed lines indicate selected fence lines



THIS MAP COMPLIES WITH NATIONAL MAP ACCURACY STANDARDS FOR SALE BY U. S. GEOLOGICAL SURVEY, DENVER, COLORADO 80225, OR RESTON, VIRGINIA 22092 A FOLDER DESCRIBING TOPOGRAPHIC MAPS AND SYMBOLS IS AVAILABLE ON REQUEST



ROAD CLASSIFICATION

Primary highway, hard surface	Light-duty road, hard or improved surface
Secondary highway, hard surface	Unimproved road
Interstate Route	U. S. Route
	Slate Route

PLOESSERS DRAW, WYO.
N4407.5—W10615.7.5

1972
AMS 4772 III NE—SERIES V874

RETURN TO:
USGS AND HISTORICAL MAP ARCHIVES

2/26/75
APR 4 1976
2720
pshaw sc