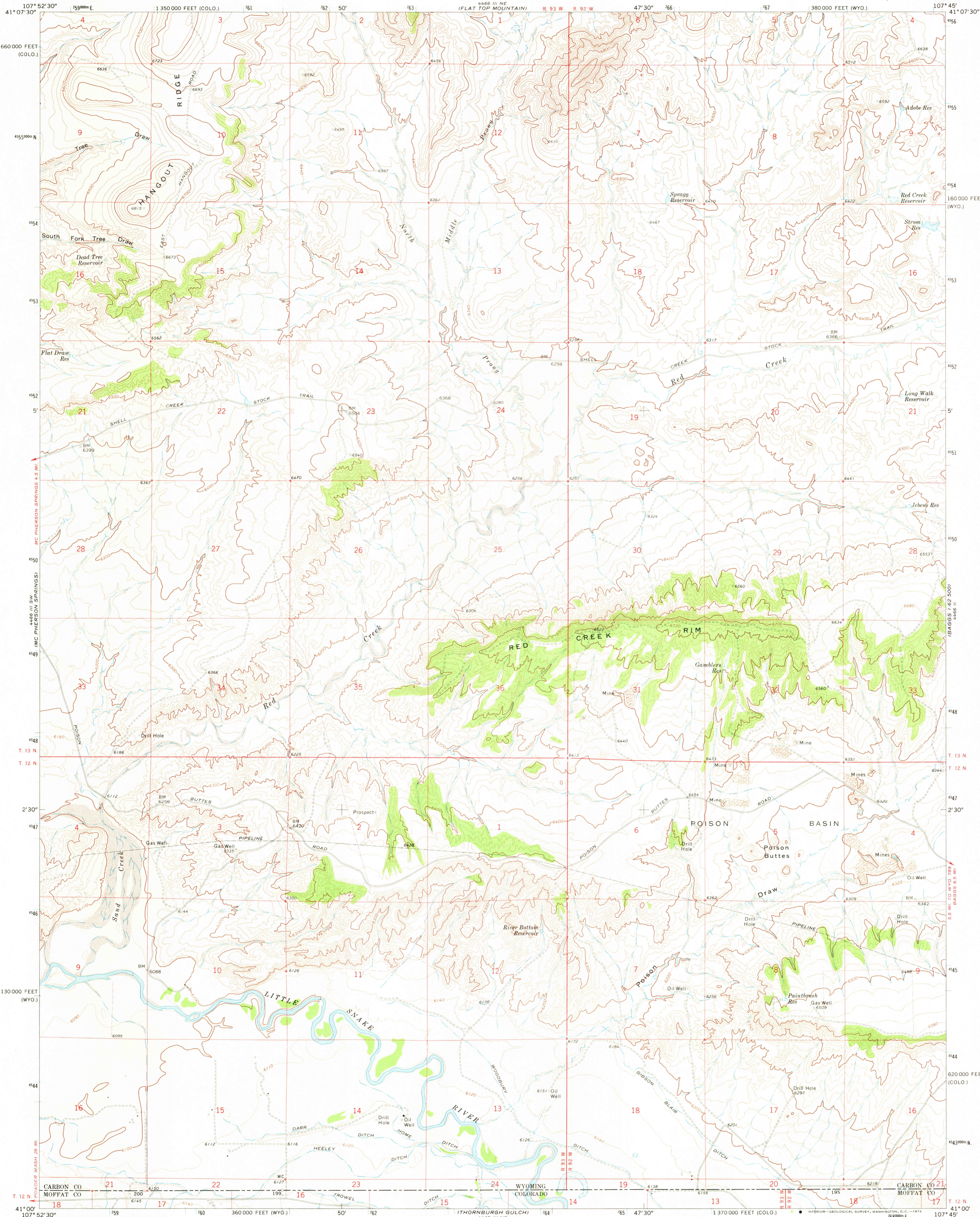
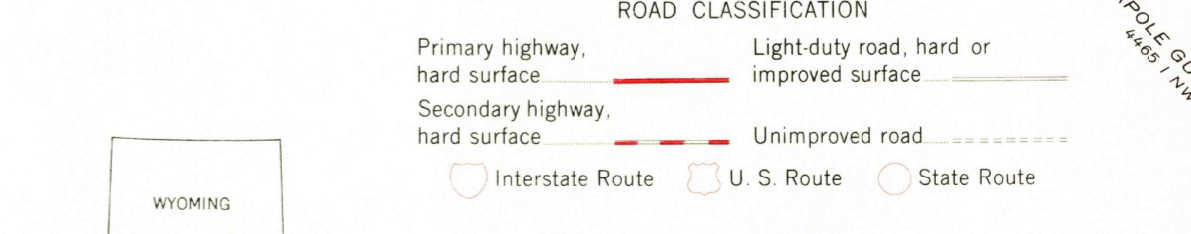
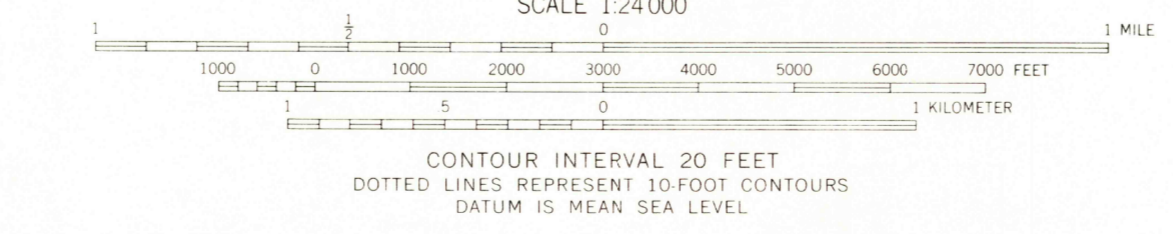
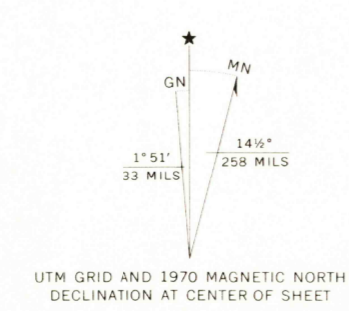


UNITED STATES
DEPARTMENT OF THE INTERIOR
GEOLOGICAL SURVEY

POISON BASIN QUADRANGLE
WYOMING-COLORADO
7.5 MINUTE SERIES (TOPOGRAPHIC)



Mapped, edited, and published by the Geological Survey
Control by USGS and USC&GS
Topography by photogrammetric methods from aerial photographs taken 1968. Field checked 1970.
Polyconic projection. 1927 North American datum
10,000-foot grid based on Wyoming coordinate system, east central zone and Colorado coordinate system, north zone
1000-meter Universal Transverse Mercator grid ticks, zone 13, shown in blue
Fine red dashed lines indicate selected fence lines
T. 12 N., sixth Principal Meridian, is duplicated in Colorado and Wyoming



THIS MAP COMPLIES WITH NATIONAL MAP ACCURACY STANDARDS
FOR SALE BY U. S. GEOLOGICAL SURVEY, DENVER, COLORADO 80225, OR WASHINGTON, D. C. 20242
A FOLDER DESCRIBING TOPOGRAPHIC MAPS AND SYMBOLS IS AVAILABLE ON REQUEST

POISON BASIN, WYO.-COLO.
N4100-W10745/7.5
1970
MAY 3 0 1973
3805
USGS Historical File Topographic Division
AMS 4466 III SE-SERIES V874

DIPPING ROCK SPRING

4466 III SE (MC PHEERSON SPRINGS) 4.3 MI.

4466 III SW (MC PHEERSON SPRINGS)

POWDER WASH. 26 MI.

POWDER BUTTE 4897 NW

4466 III NE (FLAT TOP MOUNTAIN) R. 93 W. R. 92 W.

4466 III (BAGGS) 162 500'

4466 III SE (BAGGS) 6.5 MI.

POLE GULCH 4465 NW

RETURN TO: USGS HISTORICAL MAP ARCHIVES