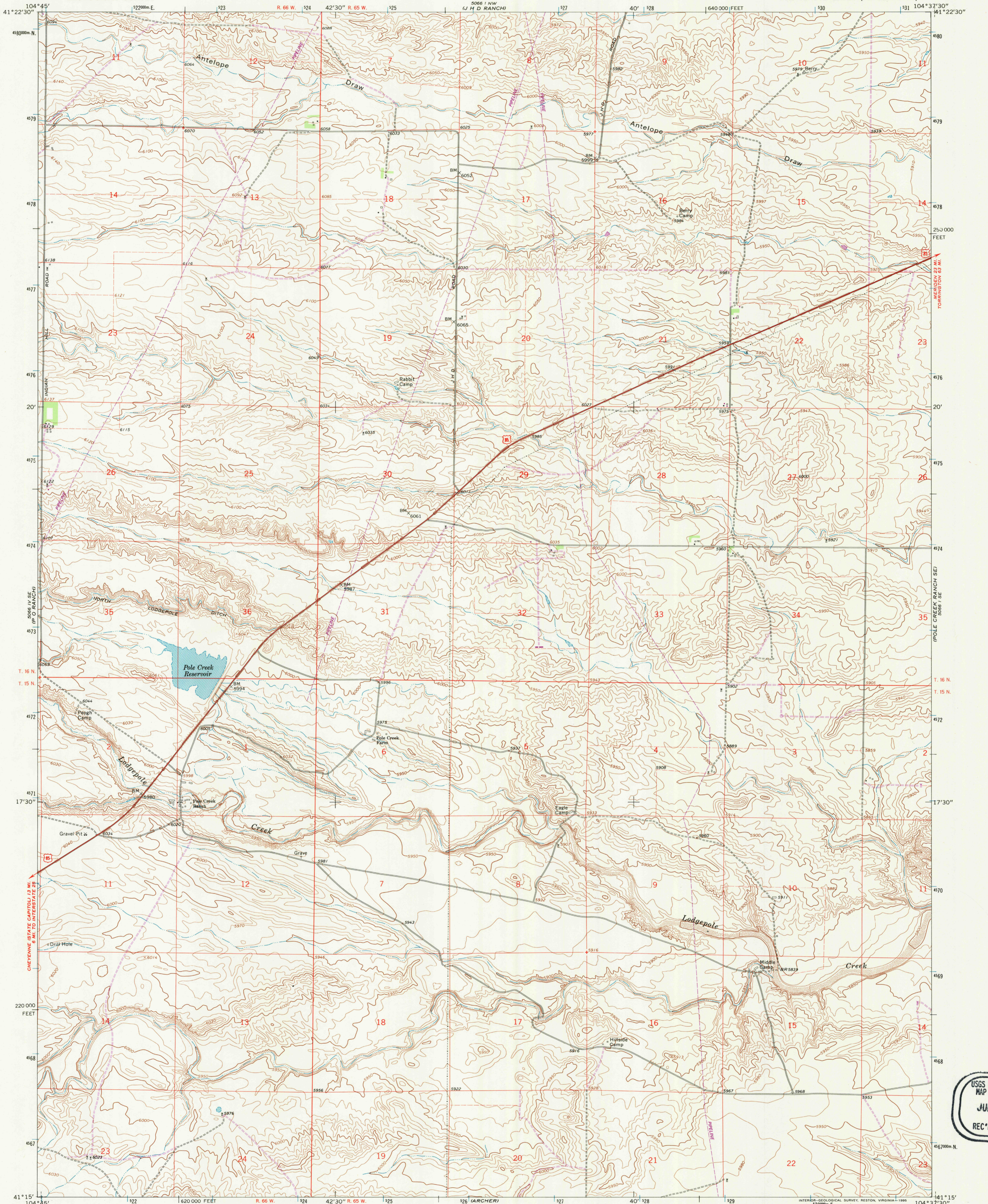


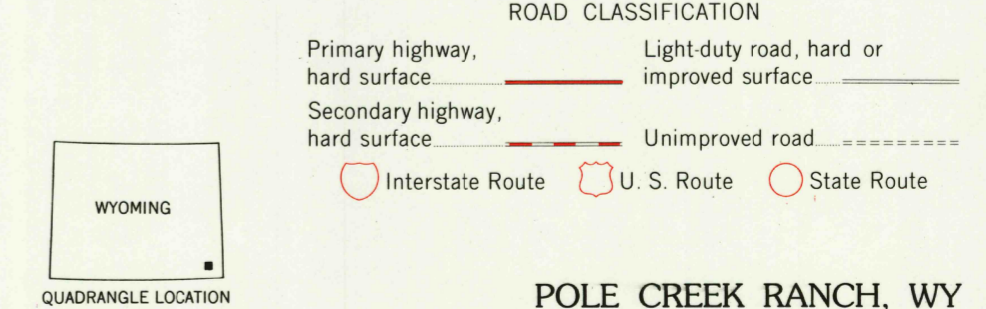
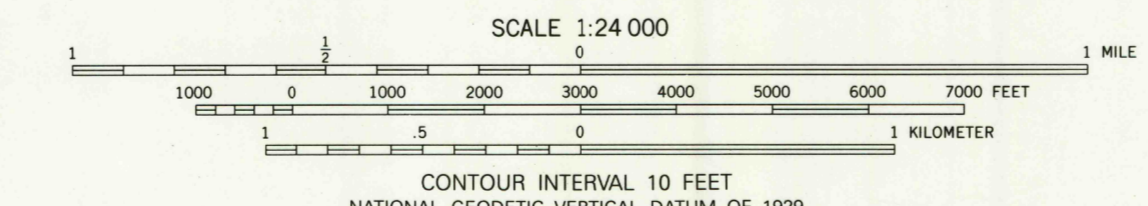
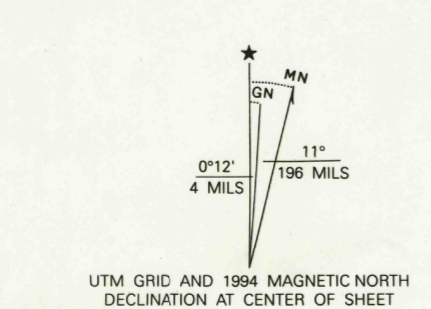
UNITED STATES
DEPARTMENT OF THE INTERIOR
GEOLOGICAL SURVEY

POLE CREEK RANCH QUADRANGLE
WYOMING-LARAMIE CO.
7.5 MINUTE SERIES (TOPOGRAPHIC)

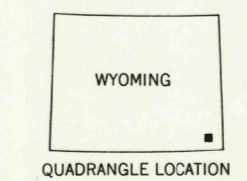


USGS AND HISTORICAL
MAP ARCHIVES
JUN 16 1995
REC'D FILE COPY

Produced by the United States Geological Survey
Control by USGS and NOS/NOAA
Compiled from imagery taken 1958. Photoinspected using
imagery dated 1991; no major culture or drainage changes
observed. PLSS and survey control current as of 1963
Names verified 1994
North American Datum of (NAD 27). Projection and
10000-foot ticks: Wyoming Coordinate System, east zone
(Transverse Mercator)
Blue 1000-meter Universal Transverse Mercator ticks, zone 13
North American Datum of 1983 (NAD 83) is shown by dashed
corner ticks. The values of the shift between NAD 27 and NAD 83
for 7.5-minute intersections are obtainable from National Geodetic
Survey NADCON software
Fine red dashed lines indicate selected fence lines
Revisions shown in purple compiled from aerial photographs
taken 1976. This information not field checked. Map edited 1978



THIS MAP COMPLIES WITH NATIONAL MAP ACCURACY STANDARDS
FOR SALE BY U.S. GEOLOGICAL SURVEY
DENVER, COLORADO 80225, OR RESTON, VIRGINIA 22092
A FOLDER DESCRIBING TOPOGRAPHIC MAPS AND SYMBOLS IS AVAILABLE ON REQUEST



POLE CREEK RANCH, WY
41104-C6-TF-024

1991
DMA 5066 1 SW-SERIES V874

