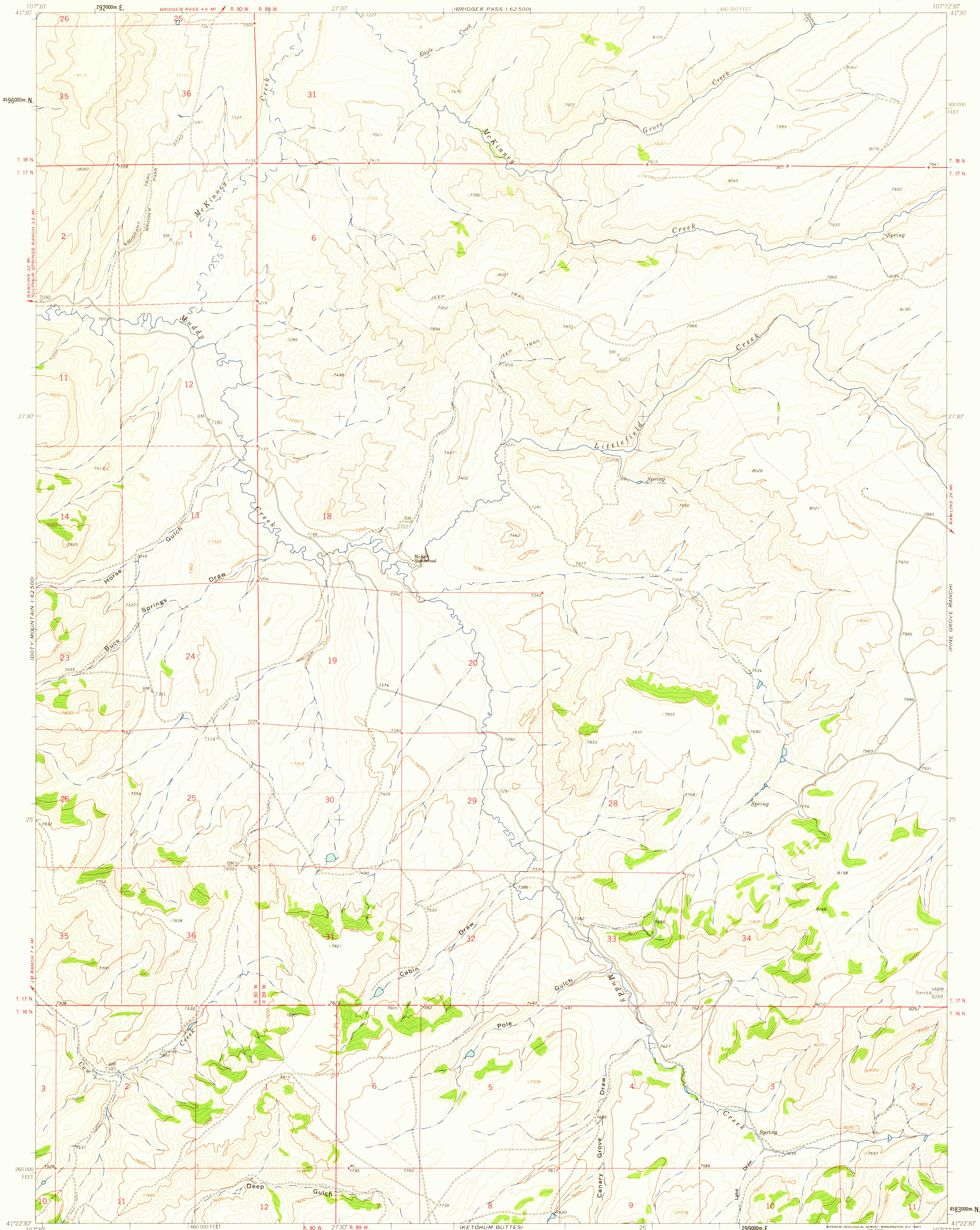
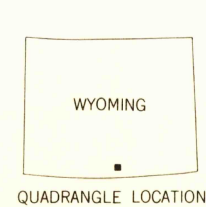
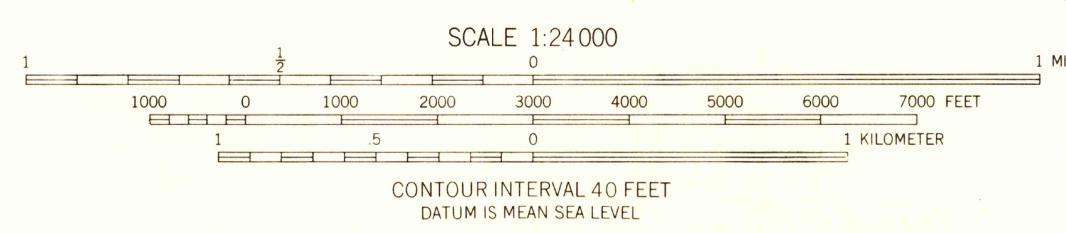


BRIDGER PASS
1:62,500



Mapped, edited, and published by the Geological Survey as part of the Department of the Interior program for the development of the Missouri River Basin
Control by USGS and USC&GS
Topography by photogrammetric methods from aerial photographs taken 1957. Field checked 1961
Polyconic projection. 1927 North American datum
10,000-foot grid based on Wyoming coordinate system, east-central zone
1000 meter Universal Transverse Mercator grid ticks, zone 13, shown in blue
Fine red dashed lines indicate selected fence and field lines where generally visible on aerial photographs. This information is unchecked
Certain land lines are omitted because of insufficient data



ROAD CLASSIFICATION
Light-duty ———— Unimproved dirt - - - - -

THIS MAP COMPLIES WITH NATIONAL MAP ACCURACY STANDARDS
FOR SALE BY U.S. GEOLOGICAL SURVEY, DENVER 25, COLORADO OR WASHINGTON 25, D. C.
A FOLDER DESCRIBING TOPOGRAPHIC MAPS AND SYMBOLS IS AVAILABLE ON REQUEST

POLE GULCH, WYO.
N4122 5 - W10722 5/7 5

1961

RETURN TO:
USGS AND HISTORICAL MAP ARCHIVES
MAR 1 1963
IMC CARTY RANCH

2190