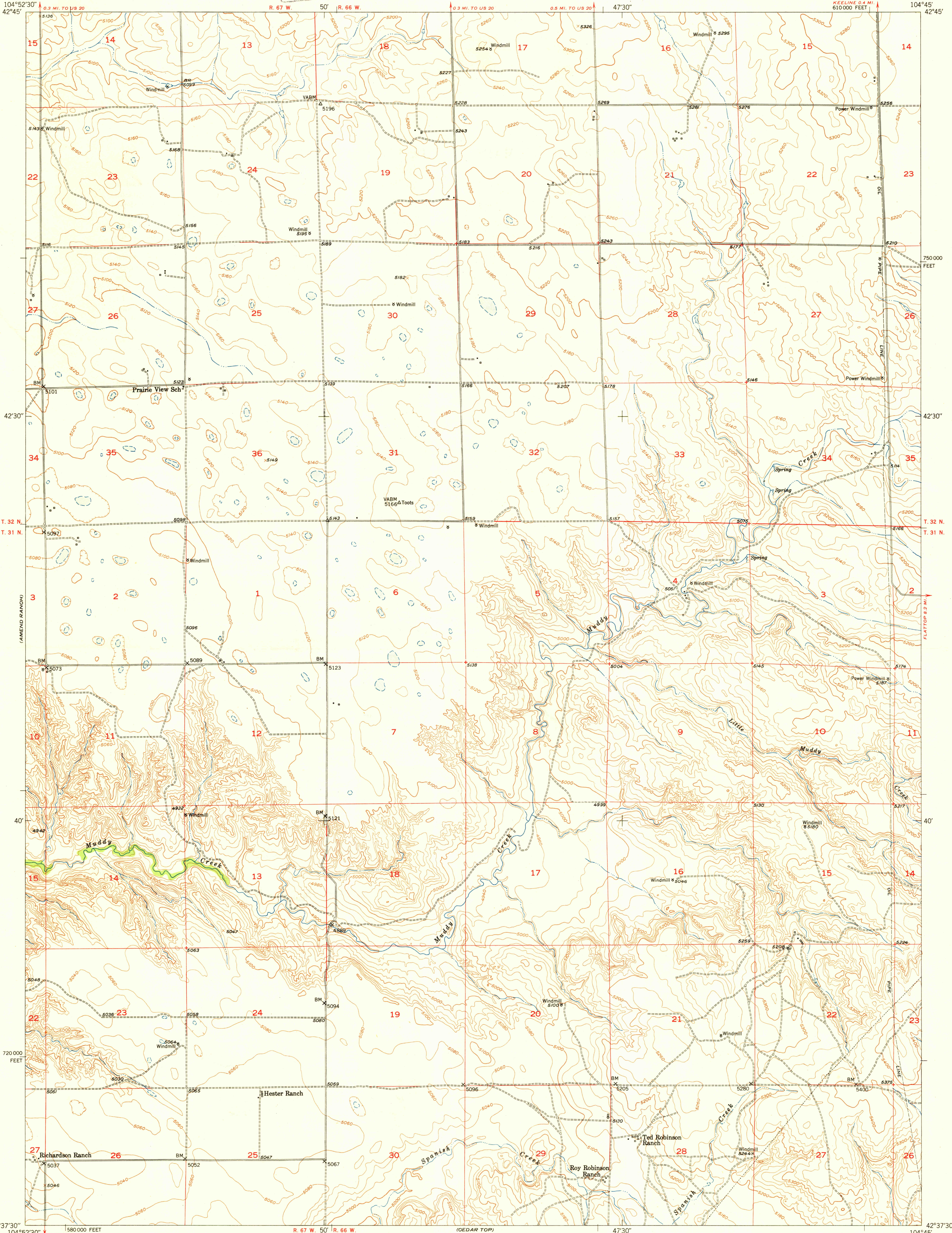
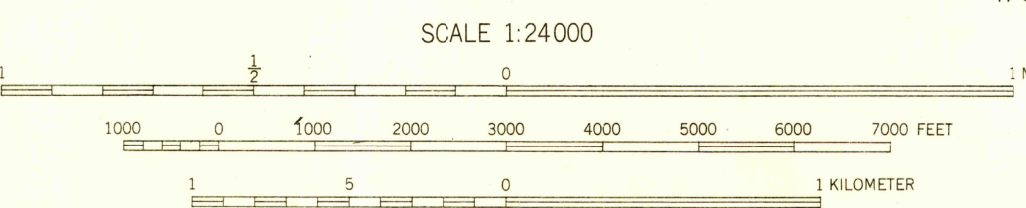


U.S.G.S.
FILE COPY
Inspection and Editing.



Mapped, edited, and published by the Geological Survey as part of the Department of the Interior program for the development of the Missouri River Basin Control by USGS and USCGS
Topography from aerial photographs by multiplex methods, and by plane-table surveys 1949
Aerial photographs taken September 1948. Field check 1949
Polyconic projection. 1927 North American datum
10,000-foot grid based on Wyoming coordinate system, east zone



CONTOUR INTERVAL 20 FEET
DATUM IS MEAN SEA LEVEL

ROAD CLASSIFICATION
HEAVY-DUTY ALL WEATHER ROADS DRY WEATHER ROADS
Medium-duty LANE IS LANE Improved dirt
Loose-surface, graded, or narrow hard-surface LANE IS LANE Unimproved dirt
U. S. Route State Route

PRAIRIE VIEW SCHOOL, WYO.
N4237.5-W10445/7.5

U.S.G.S.
FILE COPY
Inspection and Editing.

RETURN TO:
USGS AND HISTORICAL MAP ARCHIVES

JUN 10 1950 2120