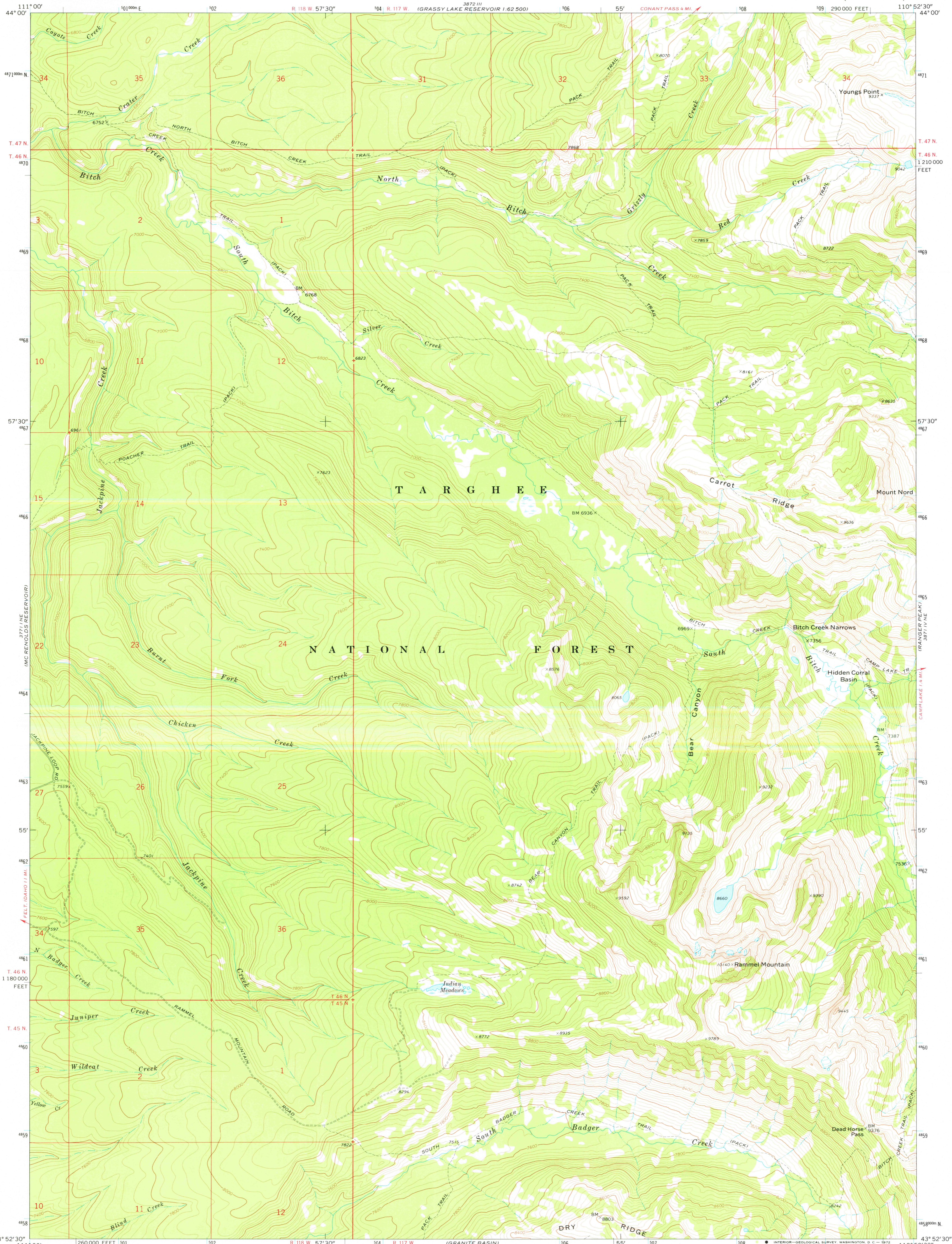
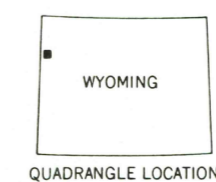
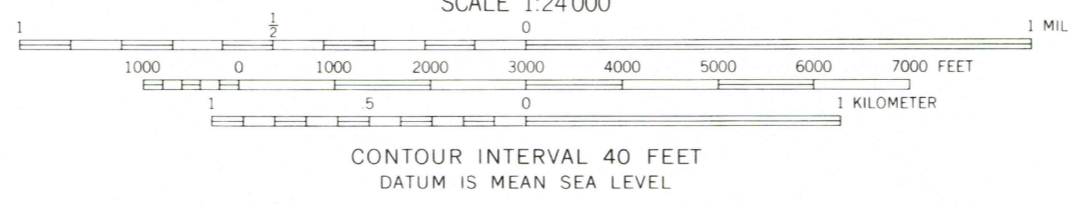
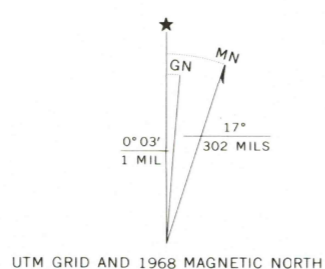


3872 III
924 505 474
1 62 5000



Mapped, edited, and published by the Geological Survey
Control by USGS and USC&GS
Topography by photogrammetric methods from aerial
photographs taken 1967. Field checked 1968
Polyconic projection. 1927 North American datum
10,000-foot grid based on Wyoming coordinate system,
west zone
1000-meter Universal Transverse Mercator grid ticks,
zone 12, shown in blue
Where omitted, land lines have not been established



ROAD CLASSIFICATION
Unimproved road, fair or dry weather

THIS MAP COMPLIES WITH NATIONAL MAP ACCURACY STANDARDS
FOR SALE BY U. S. GEOLOGICAL SURVEY, DENVER, COLORADO 80225, OR WASHINGTON, D. C. 20242
A FOLDER DESCRIBING TOPOGRAPHIC MAPS AND SYMBOLS IS AVAILABLE ON REQUEST

USGS
Historical File
Topographic Division

RAMMEL MOUNTAIN, WYO.
N4352.5-W11052.5/7.5

1968
AMS 3871 IV NW-SERIES V874

APR 12 1977

RETURN TO:
USGS AND HISTORICAL MAP ARCHIVES

4200