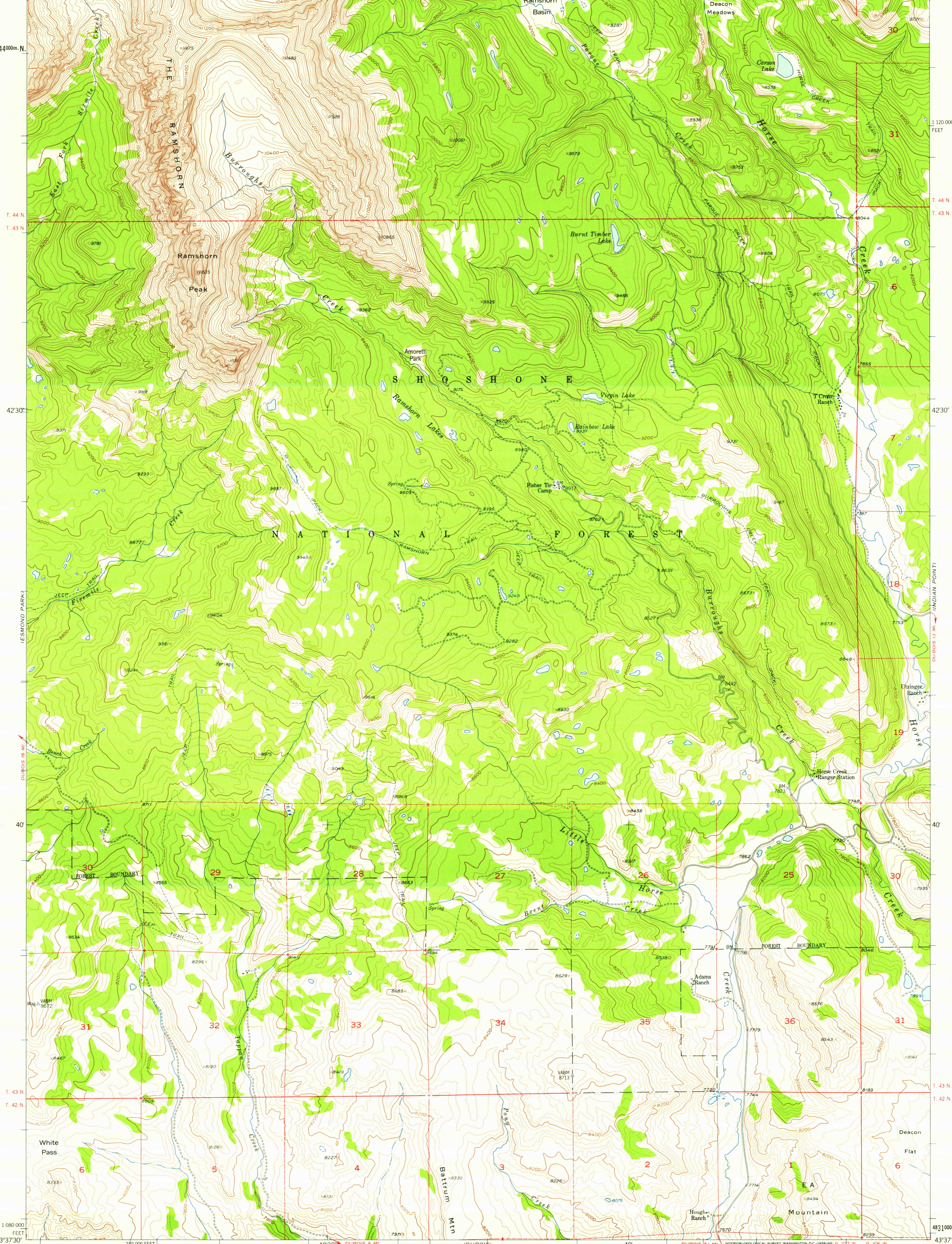
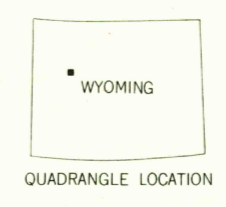
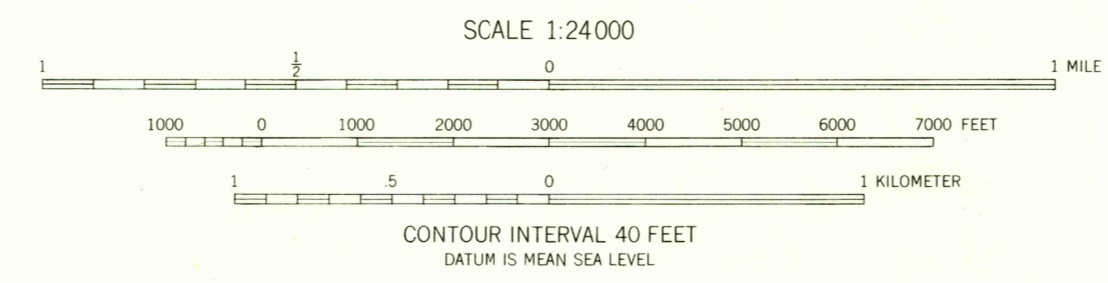
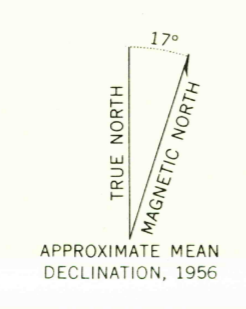


109°45' 43'45" 601000m.E. 42°30' (FIVE POCKETS) 40' 260 000 FEET R 107 W R 106 W 109°37'30" 43'45"



Mapped, edited, and published by the Geological Survey as part of the Department of the Interior program for the development of the Missouri River Basin Control by USGS and USC&GS  
Topography from aerial photographs by photogrammetric methods  
Aerial photographs taken 1953. Field check 1956  
Polyconic projection, 1927 North American datum  
10,000-foot grid based on Wyoming coordinate system, west central zone  
1000-meter Universal Transverse Mercator grid ticks, zone 12, shown in blue  
Dashed land lines indicate approximate locations  
Land lines unsurveyed in T. 44 N., R. 107 W. and in part of T. 43 N., R. 107 W.



ROAD CLASSIFICATION  
Light-duty ——— Unimproved dirt =

RAMSHORN PEAK, WYO.  
N4337.5—W10937.5/7.5  
1956

THIS MAP COMPLIES WITH NATIONAL MAP ACCURACY STANDARDS  
FOR SALE BY U.S. GEOLOGICAL SURVEY, DENVER 2, COLORADO OR WASHINGTON 25, D.C.  
A FOLDER DESCRIBING TOPOGRAPHIC MAPS AND SYMBOLS IS AVAILABLE ON REQUEST

RETURN TO:  
USGS AND HISTORICAL MAP ARCHIVES

U.S.G.S.  
FILE COPY  
TOPOGRAPHIC DIVISION

AUG 7 1958  
1855