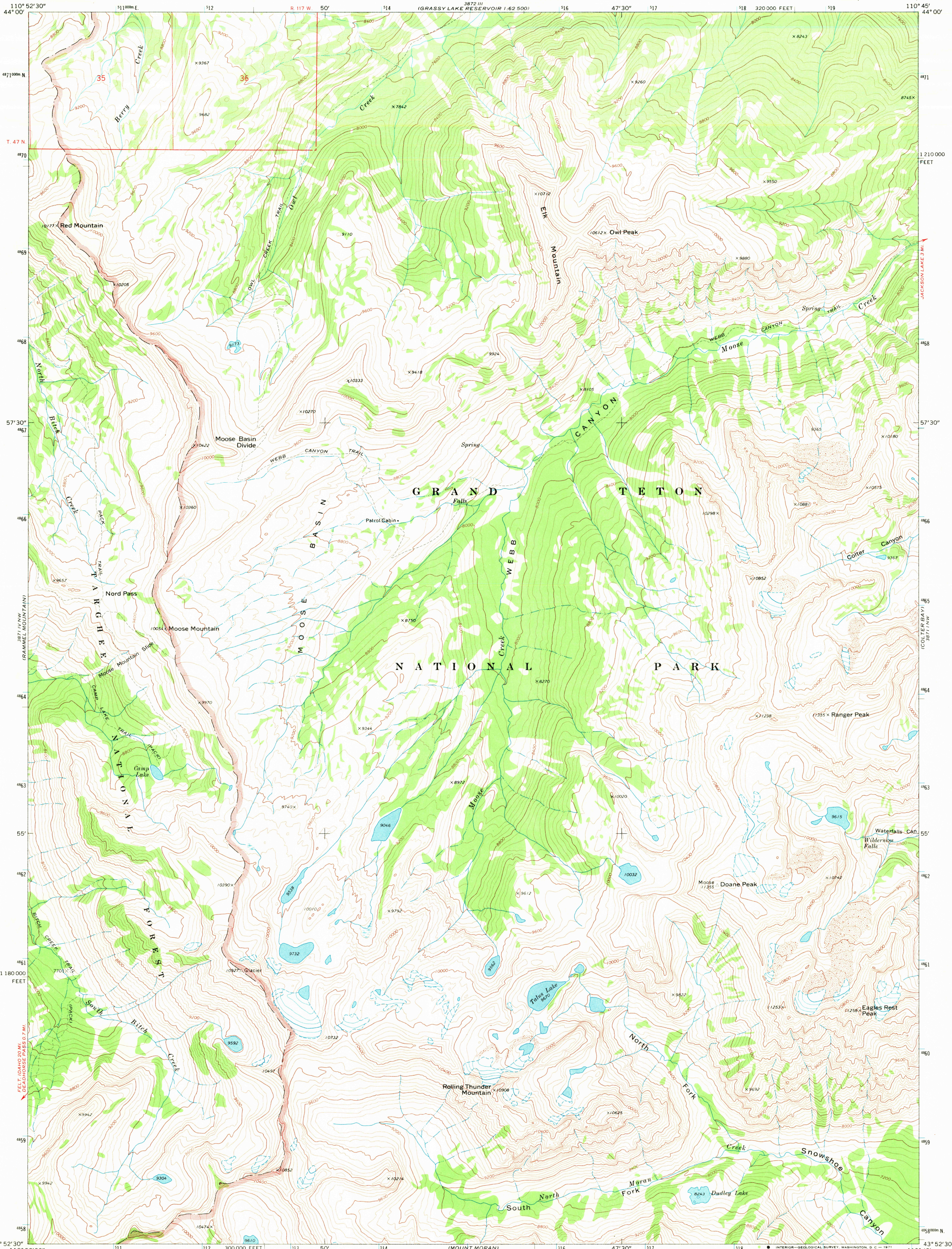
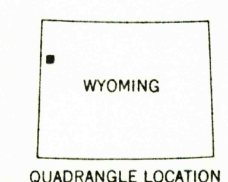
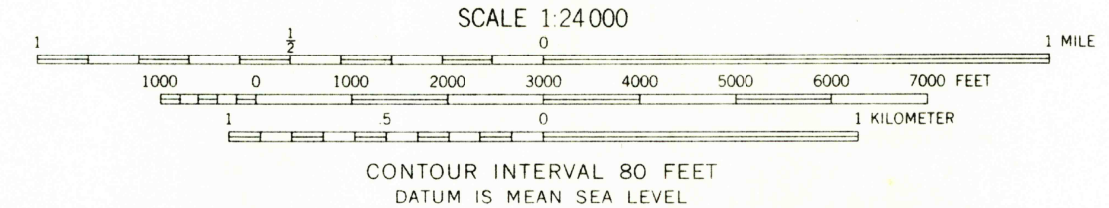
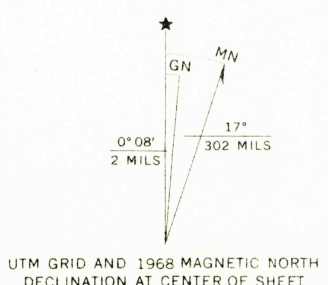


UNITED STATES  
DEPARTMENT OF THE INTERIOR  
GEOLOGICAL SURVEY

RANGER PEAK QUADRANGLE  
WYOMING-TETON CO.  
7.5 MINUTE SERIES (TOPOGRAPHIC)



Mapped, edited, and published by the Geological Survey  
Control by USGS and USC&GS  
Topography by photogrammetric methods from aerial photographs taken 1967. Field checked 1968  
Polyconic projection. 1927 North American datum  
10,000-foot grid based on Wyoming coordinate system, west zone  
1000-meter Universal Transverse Mercator grid ticks, zone 12, shown in blue  
Where omitted, land lines have not been established



ROAD CLASSIFICATION  
Trails

THIS MAP COMPLIES WITH NATIONAL MAP ACCURACY STANDARDS  
FOR SALE BY U.S. GEOLOGICAL SURVEY, DENVER, COLORADO 80225, OR WASHINGTON, D. C. 20242  
A FOLDER DESCRIBING TOPOGRAPHIC MAPS AND SYMBOLS IS AVAILABLE ON REQUEST

USGS  
HISTORICAL FILE  
TOPOGRAPHIC DIVISION

RANGER PEAK, WYO.  
N4352.5-W11045.7.5  
1968  
AMS 3871 IV NE-SERIES V874

NOV 8 1971

RETURN TO:  
USGS AND HISTORICAL MAP ARCHIVES

1900