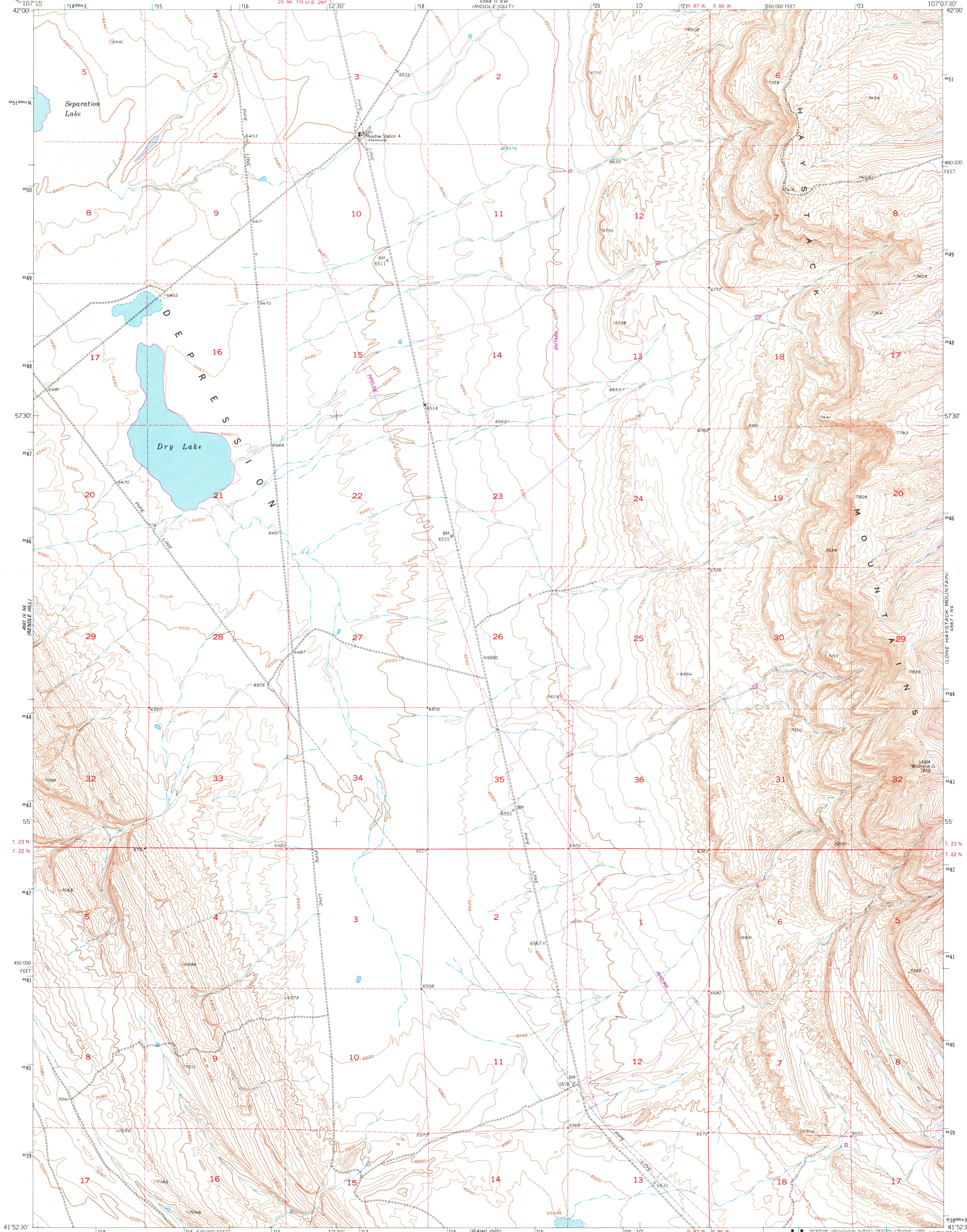


UNITED STATES
DEPARTMENT OF THE INTERIOR
GEOLOGICAL SURVEY

RAWLINS NW QUADRANGLE
WYOMING-CARBON CO.
7.5 MINUTE SERIES (TOPOGRAPHIC)

888 11 15
1100 1000
MOUNTAIN



Mapped, edited, and published by the Geological Survey as part of the Department of the Interior program for the development of the Missouri River Basin. Control by USGS and NOS/NOAA. Topography from aerial photographs by multiplex methods. Aerial photographs taken 1949. Field check 1953. Polyconic projection. 1927 North American datum. 10,000-foot grid based on Wyoming coordinate system, east central zone. Dashed land lines indicate approximate locations. Unchecked elevations are shown in brown. 1000-meter Universal Transverse Mercator grid ticks zone 13, shown in blue.

To place on the predicted North American Datum 1983 move the projection lines 8 meters north and 52 meters east as shown by dashed corner ticks.

THIS MAP COMPLIES WITH NATIONAL MAP ACCURACY STANDARDS FOR SALE BY U. S. GEOLOGICAL SURVEY, DENVER, COLORADO 80225, OR RESTON, VIRGINIA 22092. A FOLDER DESCRIBING TOPOGRAPHIC MAPS AND SYMBOLS IS AVAILABLE ON REQUEST.

Revisions shown in purple compiled from aerial photographs taken 1980 and other source data. This information not field checked. Map edited 1981.

RAWLINS NW, WYO.
N4152.5-W10701.5/7.5
1953
PHOTOREVISED 1981
DMA 4567 1 NW-SERIES V874

USGS MAP HISTORICAL MAP ARCHIVES

MAR 10 1982