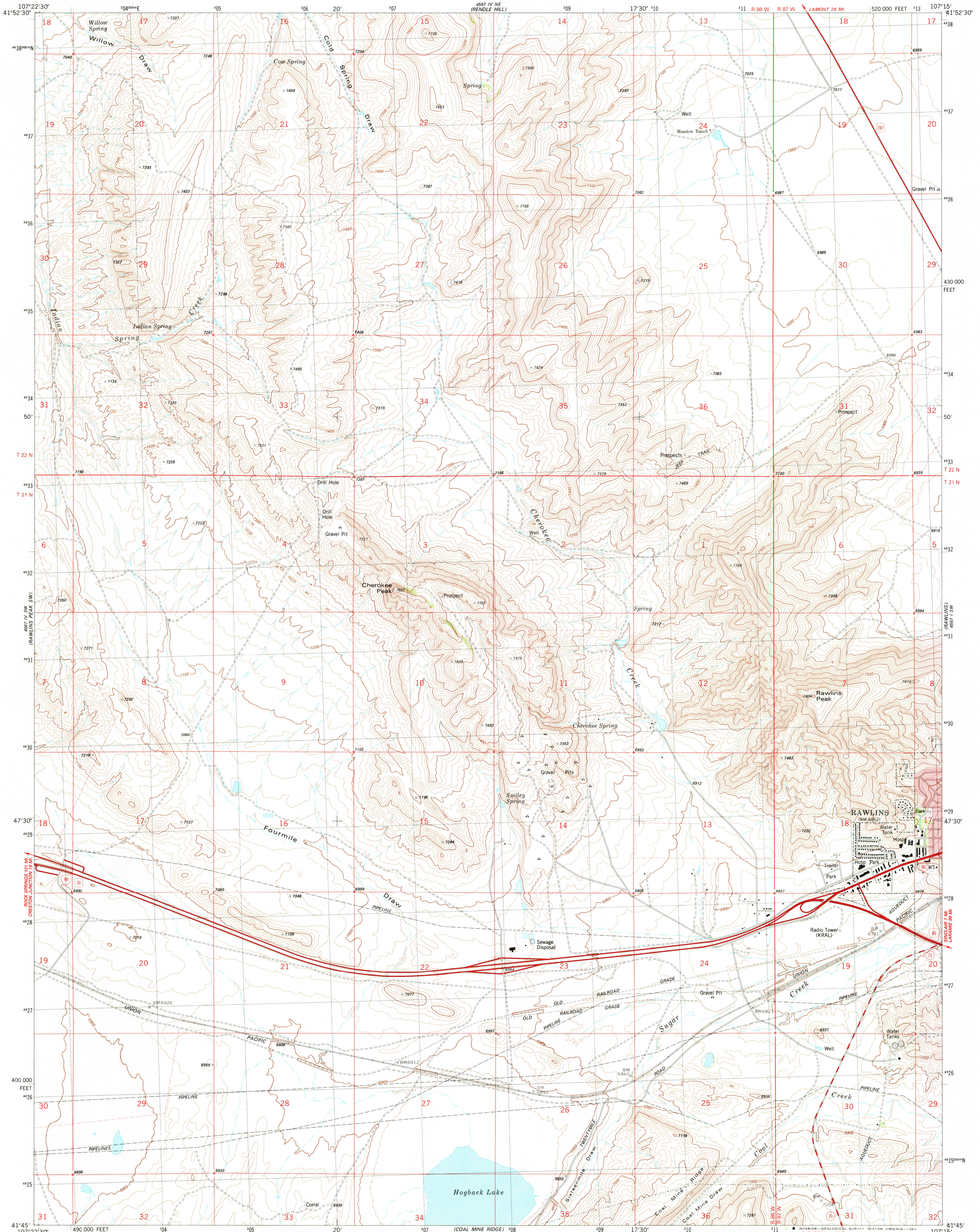


UNITED STATES
DEPARTMENT OF THE INTERIOR
GEOLOGICAL SURVEY

RAWLINS PEAK QUADRANGLE
WYOMING-CARBON CO.
7.5 MINUTE SERIES (TOPOGRAPHIC)
SE/4 RAWLINS PEAK 15' QUADRANGLE



Mapped, edited, and published by the Geological Survey

Control by USGS and NOS/NOAA

Topography by photogrammetric methods from aerial photographs taken 1975. Field checked 1978. Map edited 1983

Projection and 10,000-foot grid ticks: Wyoming coordinate system, east central zone (transverse Mercator)

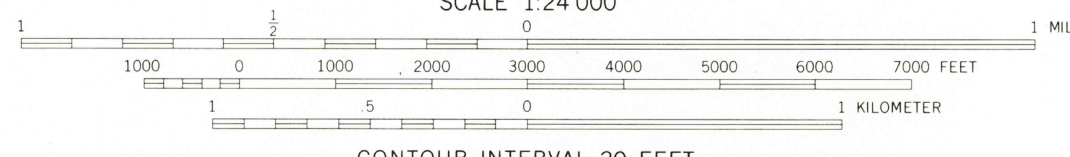
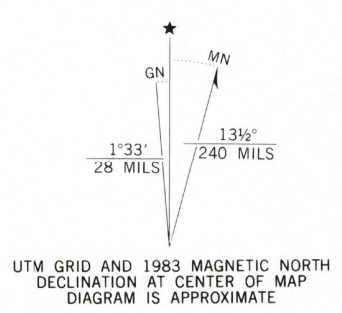
1000-meter Universal Transverse Mercator grid, zone 13

1927 North American datum

To place on the predicted North American Datum 1983

move the projection lines 8 meters north and 52 meters east as shown by dashed corner ticks

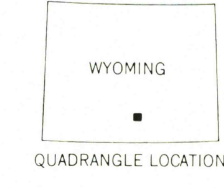
Fine red dashed lines indicate selected fence lines



CONTOUR INTERVAL 20 FEET

NATIONAL GEODETIC VERTICAL DATUM OF 1929

APR 27 1984



ROAD CLASSIFICATION

Primary highway, hard surface	Light-duty road, hard or improved surface
Secondary highway, hard surface	Unimproved road
Interstate Route	U. S. Route
	State Route

RAWLINS PEAK, WYO.
SE/4 RAWLINS PEAK 15' QUADRANGLE
N4145-W10715/7.5

1983

DMA 4567 IV SE-SERIES V874

THIS MAP COMPLIES WITH NATIONAL MAP ACCURACY STANDARDS
FOR SALE BY U. S. GEOLOGICAL SURVEY, DENVER, COLORADO 80225, OR RESTON, VIRGINIA 22092
A FOLDER DESCRIBING TOPOGRAPHIC MAPS AND SYMBOLS IS AVAILABLE ON REQUEST

RETURN TO:
USGS AND HISTORICAL MAP ARCHIVES