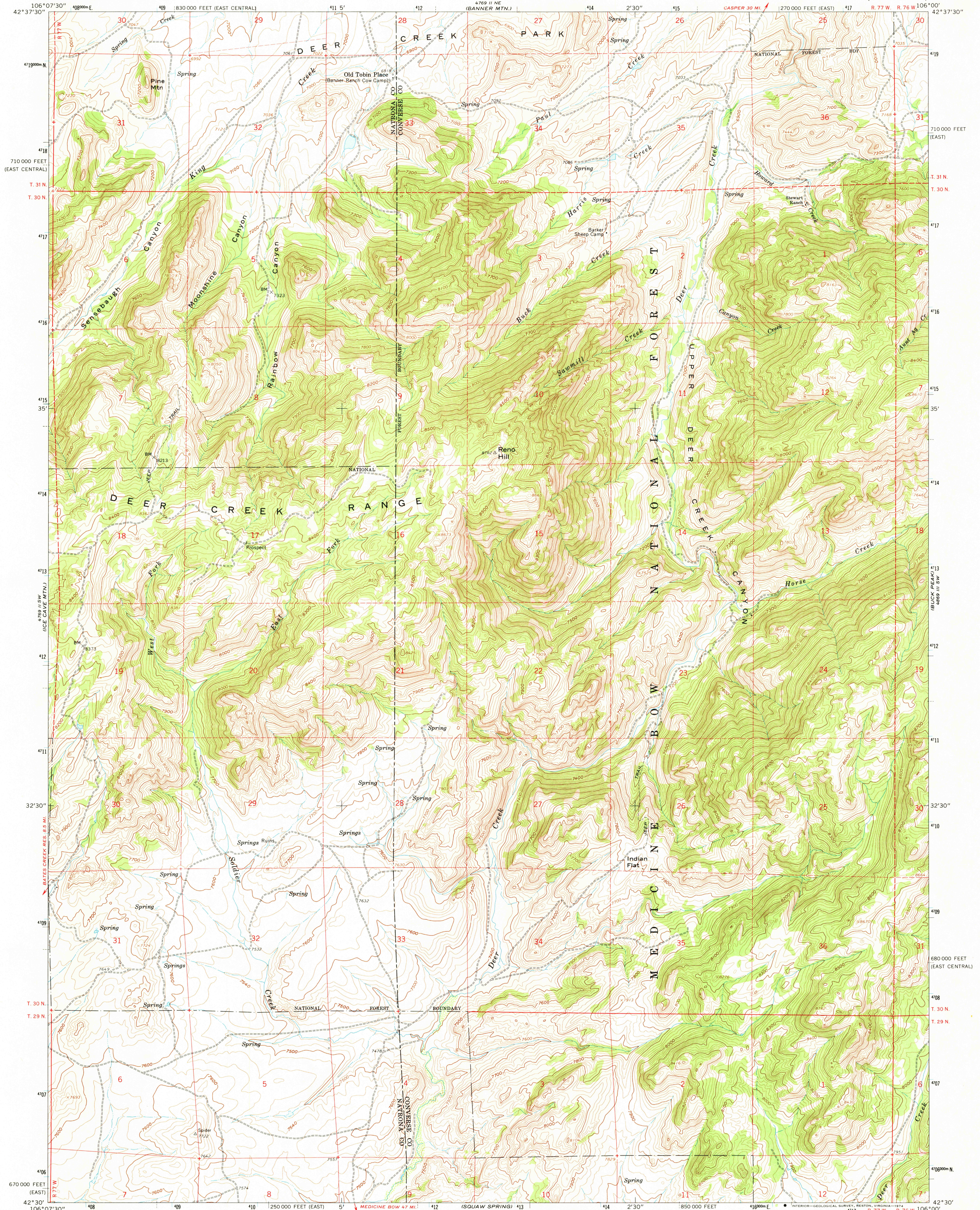
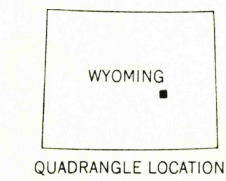
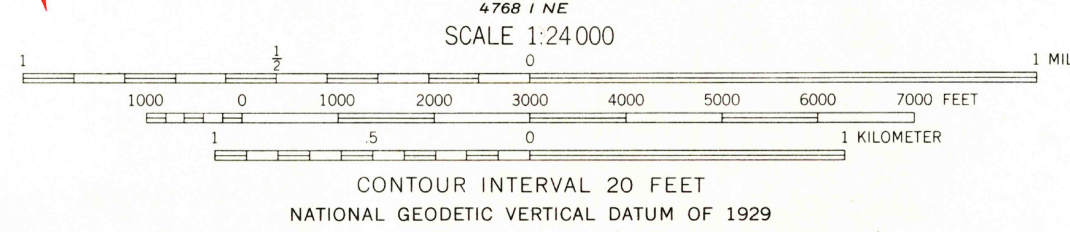
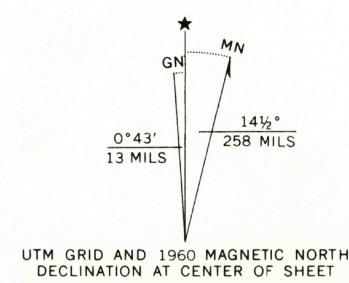


UNITED STATES
DEPARTMENT OF THE INTERIOR
GEOLOGICAL SURVEY

RENO HILL QUADRANGLE
WYOMING
7.5 MINUTE SERIES (TOPOGRAPHIC)



Mapped, edited, and published by the Geological Survey
Control by USGS and USC&GS
Topography by photogrammetric methods from aerial
photographs taken 1959. Field checked 1960
Polyconic projection. 1927 North American datum
10,000-foot grid based on Wyoming coordinate system,
east and east central zones
1000-meter Universal Transverse Mercator grid ticks,
zone 12, shown in blue
Fine red dashed lines indicate selected fence lines



ROAD CLASSIFICATION
Unimproved dirt - - - - -

THIS MAP COMPLIES WITH NATIONAL MAP ACCURACY STANDARDS
FOR SALE BY U. S. GEOLOGICAL SURVEY, DENVER, COLORADO 80225, OR RESTON, VIRGINIA 22092
A FOLDER DESCRIBING TOPOGRAPHIC MAPS AND SYMBOLS IS AVAILABLE ON REQUEST

USGS
HISTORICAL FILE
TOPOGRAPHIC DIVISION

RENO HILL, WYO.
N4230-W10600/7.5
1960
AMS 4769 II SE--SERIES V874

RETURN TO:
USGS AND HISTORICAL MAP ARCHIVES

SEP 04 1974
2500