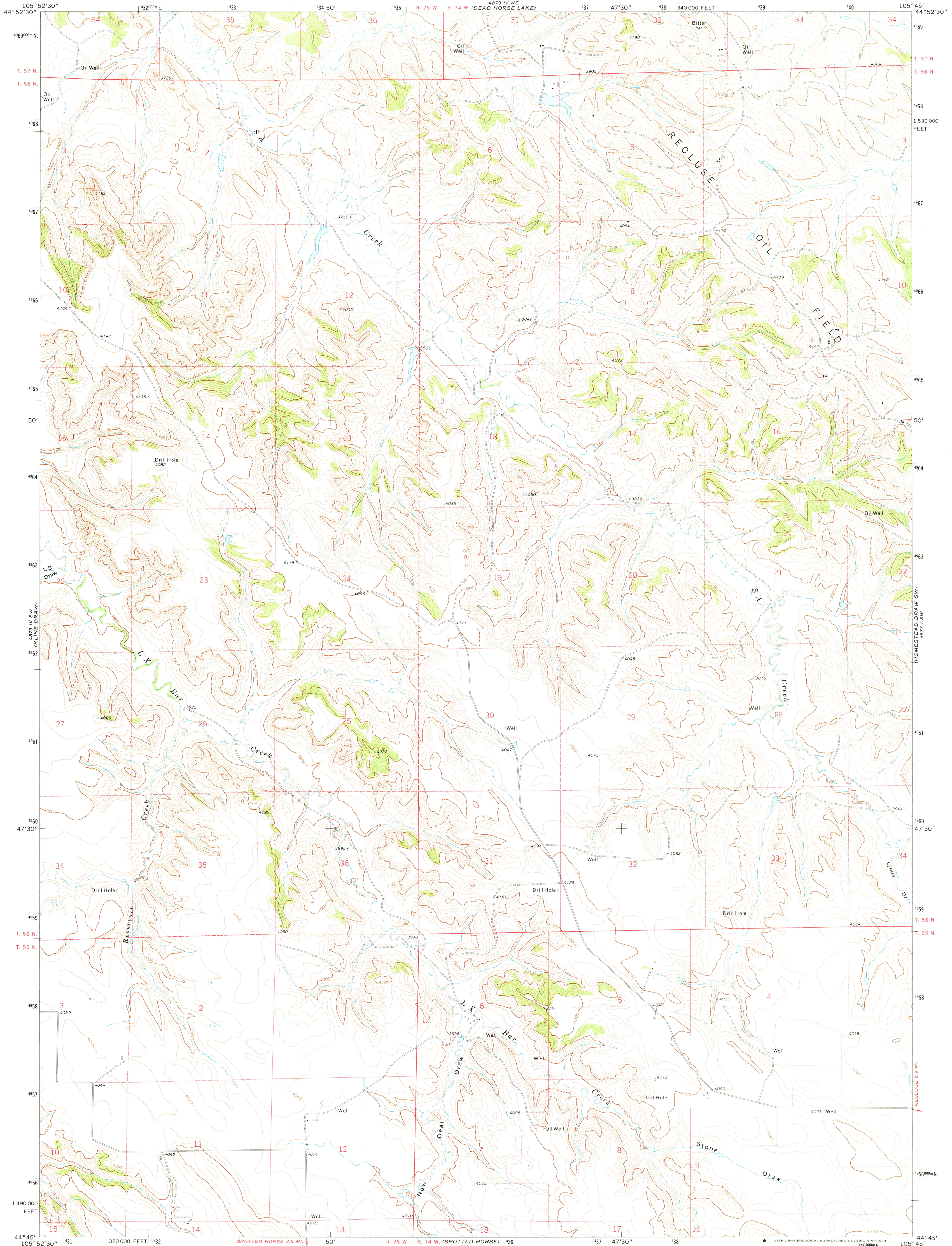
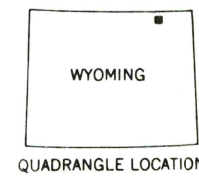
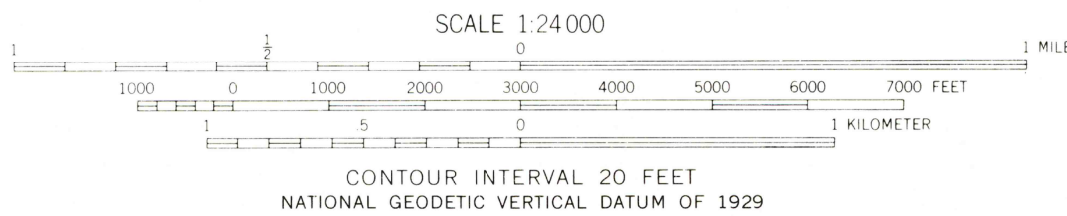
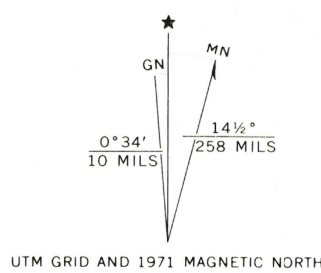


UNITED STATES  
DEPARTMENT OF THE INTERIOR  
GEOLOGICAL SURVEY

RESERVOIR CREEK QUADRANGLE  
WYOMING—CAMPBELL CO.  
7.5 MINUTE SERIES (TOPOGRAPHIC)



Mapped, edited, and published by the Geological Survey  
Control by USGS and USC&GS  
Topography by photogrammetric methods from aerial  
photographs taken 1970. Field checked 1971  
Projection and 10,000-foot grid ticks: Wyoming  
coordinate system, east zone (transverse Mercator)  
1000-meter Universal Transverse Mercator grid ticks,  
zone 13, shown in blue. 1927 North American datum  
Fine red dashed lines indicate selected fence lines  
Land lines are omitted in areas of extensive tract surveys



ROAD CLASSIFICATION  
Primary highway, hard surface  
Secondary highway, hard surface  
Light duty road, hard or improved surface  
Unimproved road  
Interstate Route  
U. S. Route  
State Route

USGS  
Historical File  
Topographic Division

RESERVOIR CREEK, WYO.  
N4445—W10545/7.5  
1971  
AMS 4873 IV SE—SERIES V874

RETURN TO:  
USGS AND HISTORICAL MAP ARCHIVES

FEB 5 1975

3350