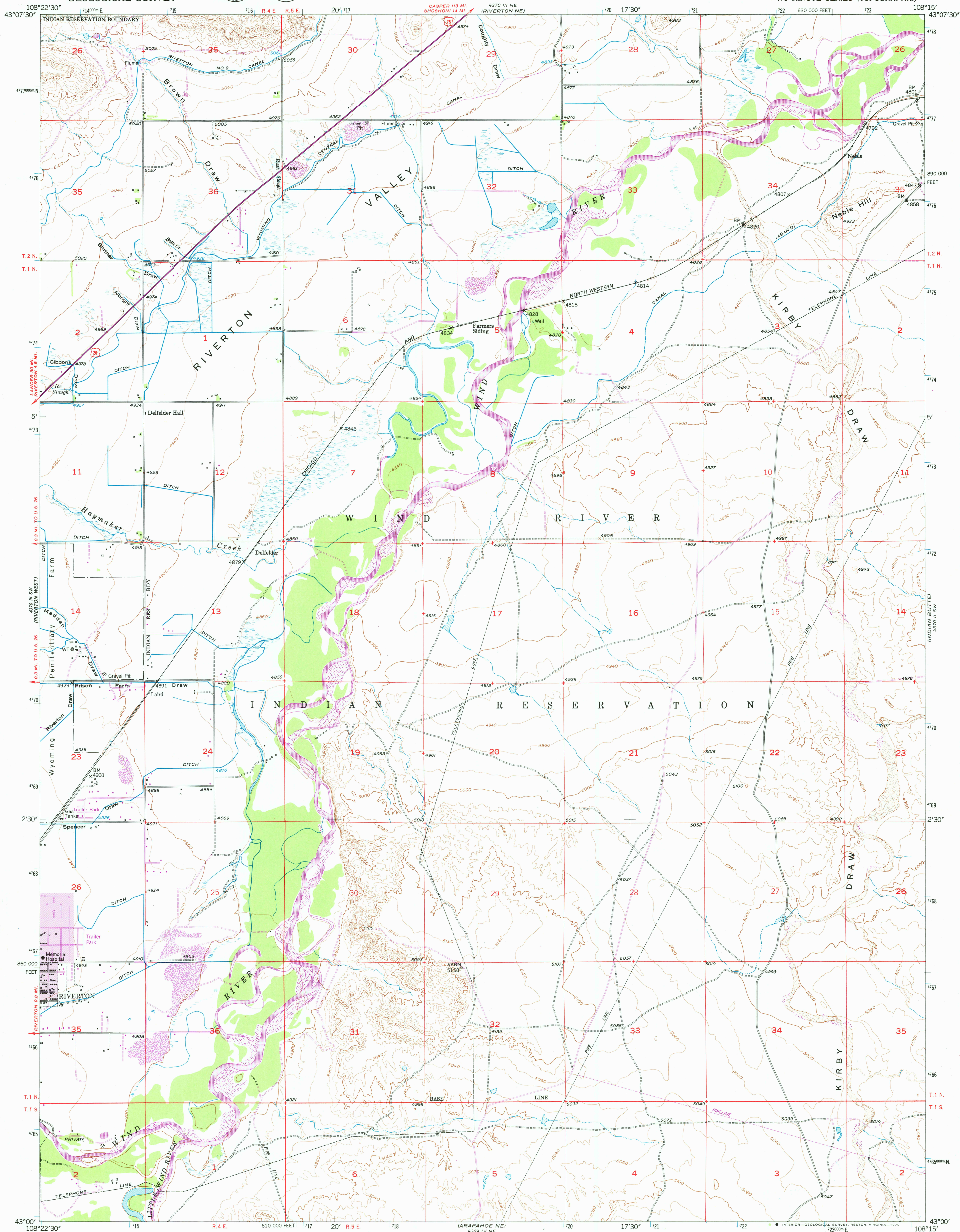


UNITED STATES
DEPARTMENT OF THE INTERIOR
GEOLOGICAL SURVEY



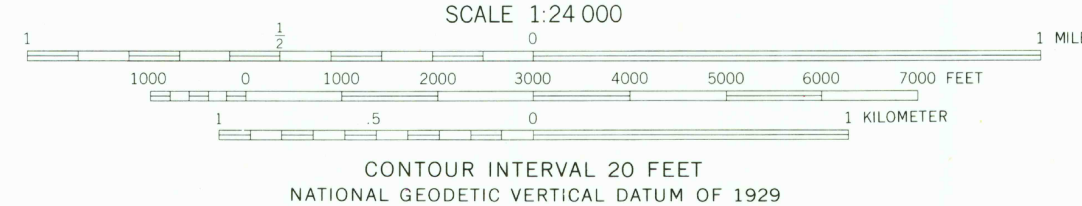
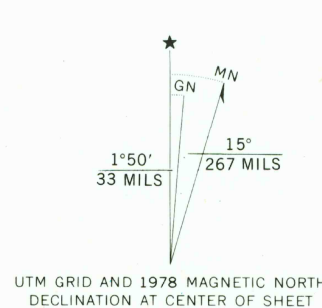
RIVERTON EAST QUADRANGLE
WYOMING-FREMONT CO.
7.5 MINUTE SERIES (TOPOGRAPHIC)



Mapped, edited, and published by the Geological Survey
as part of the Department of the Interior program
for the development of the Missouri River Basin

Control by USGS and NOS/ NOAA
Topography from aerial photographs by multiplex methods,
and plane-table surveys 1950
Aerial photographs taken 1948. Field check 1950
Polyconic projection. 1927 North American datum
10,000-foot grid based on Wyoming coordinate system,
west central zone
1000-meter Universal Transverse Mercator grid ticks,
zone 12, shown in blue

Revisions shown in purple compiled from aerial photographs taken
1975. Map edited 1978. This information not field checked
Purple tint indicates extension of urban areas



CONTOUR INTERVAL 20 FEET
NATIONAL GEODETIC VERTICAL DATUM OF 1929

THIS MAP COMPLIES WITH NATIONAL MAP ACCURACY STANDARDS
FOR SALE BY U. S. GEOLOGICAL SURVEY, DENVER, COLORADO 80225, OR RESTON, VIRGINIA 22092
A FOLDER DESCRIBING TOPOGRAPHIC MAPS AND SYMBOLS IS AVAILABLE ON REQUEST

ROAD CLASSIFICATION
Heavy-duty 4 LANE 6 LANE Light-duty
Medium-duty 4 LANE 6 LANE Unimproved dirt
U. S. Route State Route

USGS
Historical File
Topographic Division

RIVERTON EAST, WYO.
N4300-W10815/7.5

1950
PHOTOREVISED 1978
DMA 4370 III SE-SERIES V874

SEP 19 1979

USGS AND HISTORICAL MAP ARCHIVES