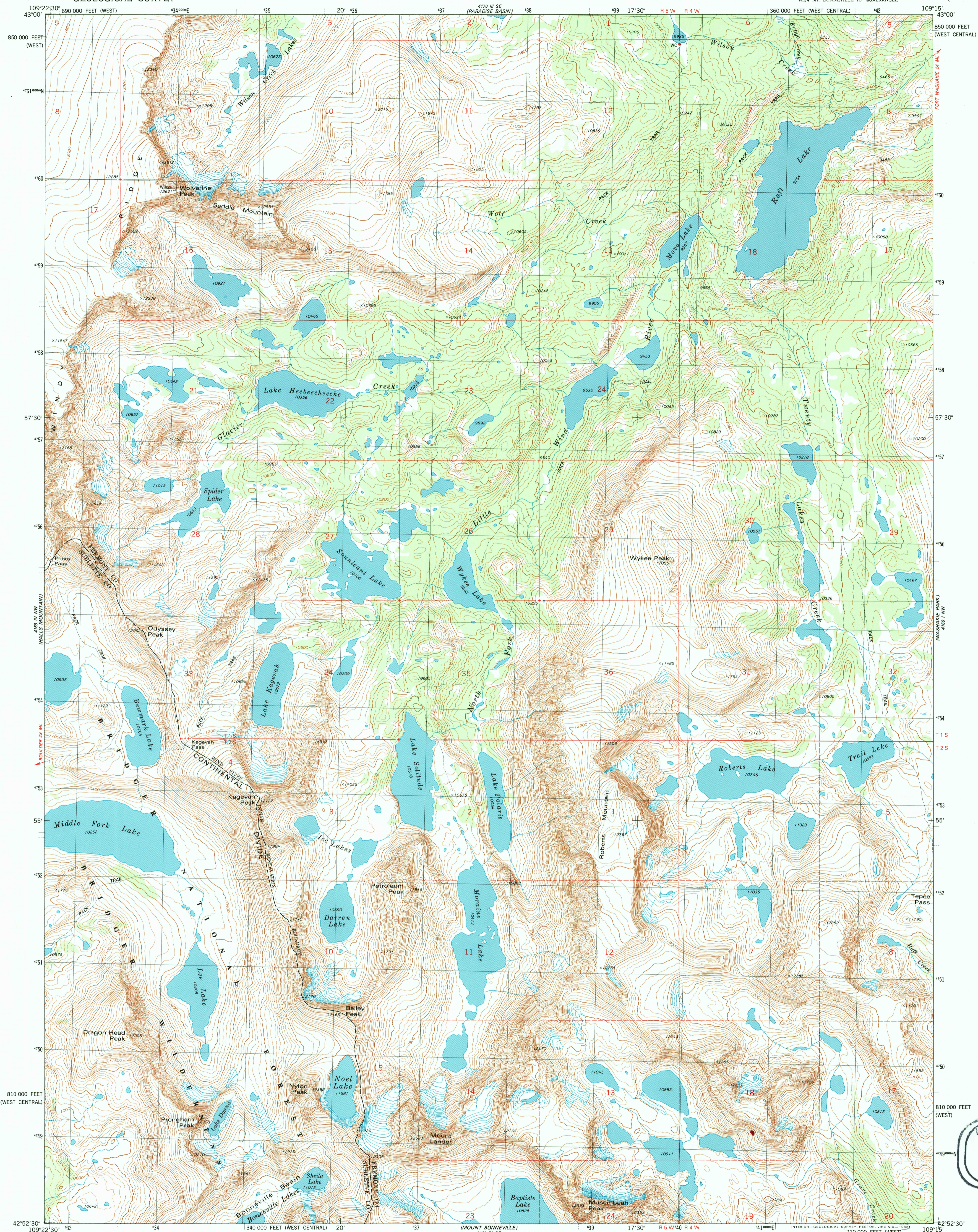
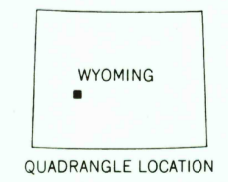
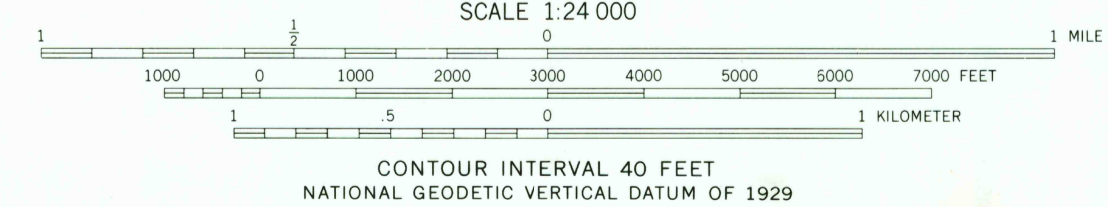
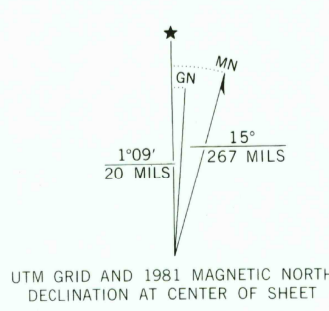


UNITED STATES  
DEPARTMENT OF THE INTERIOR  
GEOLOGICAL SURVEY

ROBERTS MOUNTAIN QUADRANGLE  
WYOMING  
7.5 MINUTE SERIES (TOPOGRAPHIC)  
NE 1/4 MT. BONNEVILLE 15' QUADRANGLE



Mapped, edited, and published by the Geological Survey  
Control by USGS and NOS/NOAA  
Topography by photogrammetric methods from aerial photographs taken 1974. Field checked 1976. Map edited 1981  
Projection: Wyoming coordinate system, west central zone (transverse Mercator)  
10,000-foot grid ticks based on Wyoming coordinate system, west central and west zones  
1000-meter Universal Transverse Mercator grid, zone 12 1927 North American datum  
To place on the predicted North American Datum 1983 move the projection lines 10 meters north and 58 meters east as shown by dashed corner ticks  
Where omitted, land lines have not been established  
There may be private inholdings within the boundaries of the National or State reservations shown on this map



ROAD CLASSIFICATION

Primary highway, hard surface	Light duty road, hard or improved surface
Secondary highway, hard surface	Unimproved road
Interstate Route	U. S. Route
	State Route

THIS MAP COMPLIES WITH NATIONAL MAP ACCURACY STANDARDS  
FOR SALE BY U. S. GEOLOGICAL SURVEY, DENVER, COLORADO 80225, OR RESTON, VIRGINIA 22092  
A FOLDER DESCRIBING TOPOGRAPHIC MAPS AND SYMBOLS IS AVAILABLE ON REQUEST

ROBERTS MOUNTAIN, WYO.  
NE 1/4 MT. BONNEVILLE 15' QUADRANGLE  
N4252.5-W10915.75

1981  
DMA 4169 IV NE-SERIES V874

