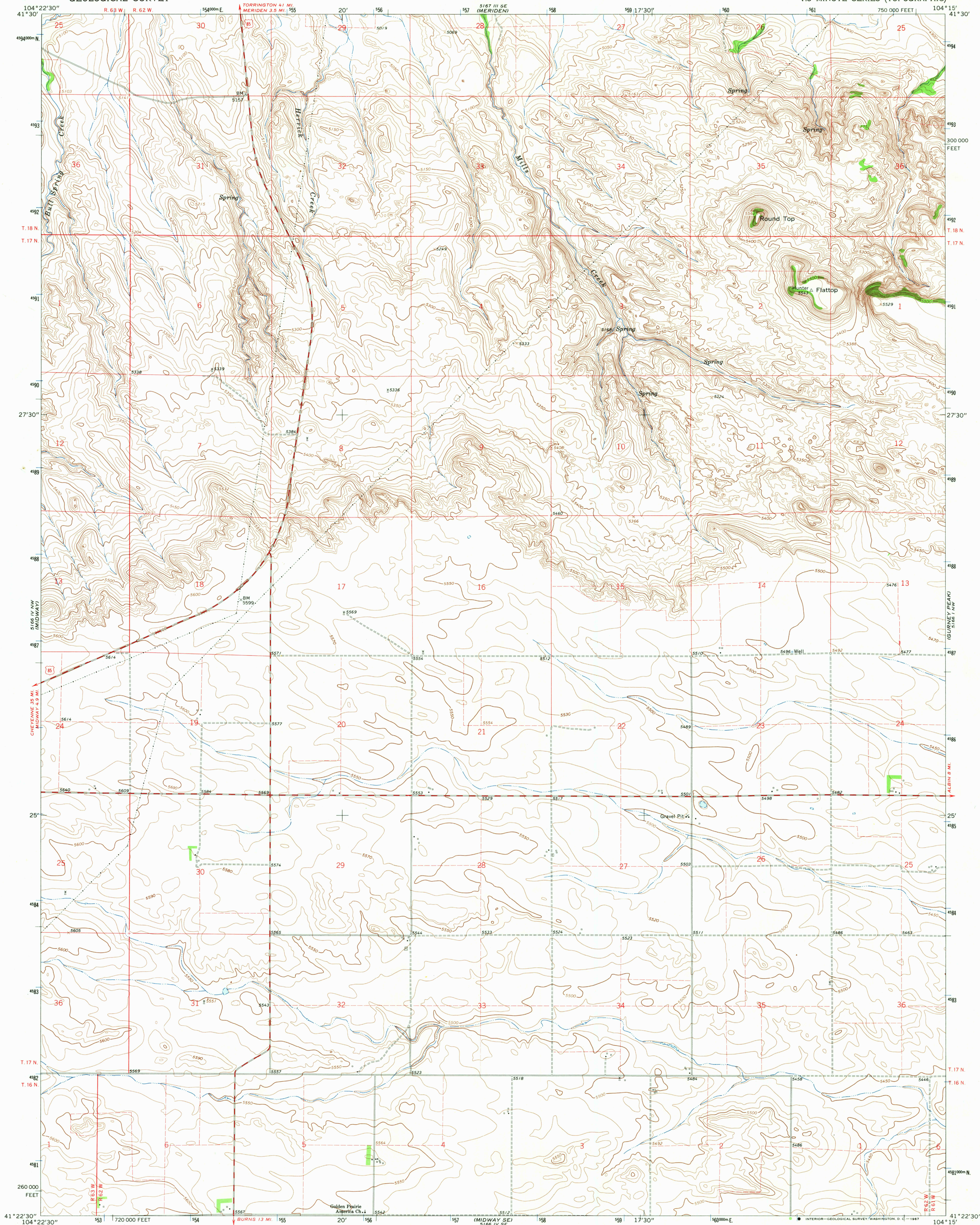
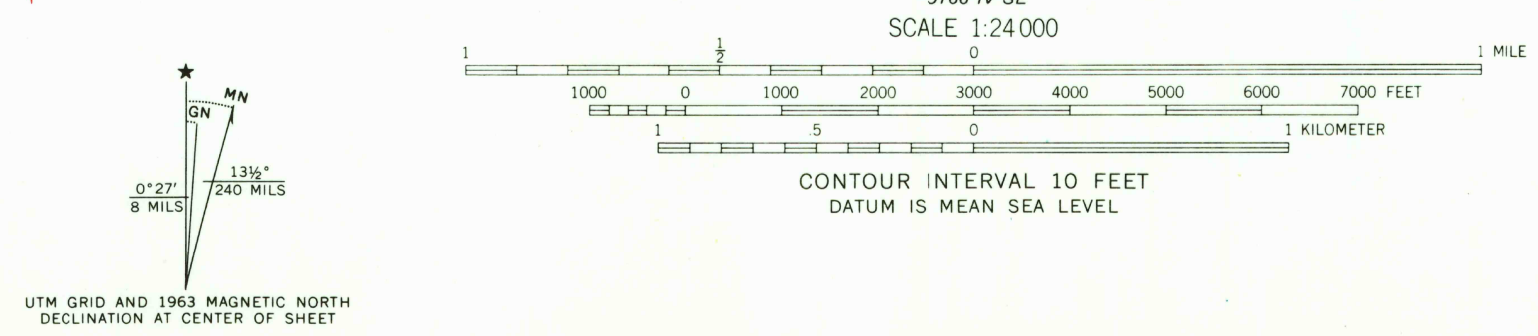


UNITED STATES
DEPARTMENT OF THE INTERIOR
GEOLOGICAL SURVEY

ROUND TOP QUADRANGLE
WYOMING-LARAMIE CO.
7.5 MINUTE SERIES (TOPOGRAPHIC)



Mapped, edited, and published by the Geological Survey
Control by USGS and USC&GS
Topography by photogrammetric methods from aerial
photographs taken 1958. Field checked 1963
Polyconic projection. 1927 North American datum
10,000-foot grid based on Wyoming coordinate system,
east zone
1000-meter Universal Transverse Mercator grid ticks,
zone 13, shown in blue
Fine red dashed lines indicate selected fence lines



ROAD CLASSIFICATION
Medium-duty ——— Light-duty ———
Unimproved dirt - - - - - U.S. Route

U.S.G.S.
FINE COPY
TOPOGRAPHIC DIVISION

ROUND TOP, WYO.
N4122.5-W10415/7.5
1963

THIS MAP COMPLIES WITH NATIONAL MAP ACCURACY STANDARDS
FOR SALE BY U.S. GEOLOGICAL SURVEY, DENVER, COLORADO 80225, OR WASHINGTON, D. C. 20242
A FOLDER DESCRIBING TOPOGRAPHIC MAPS AND SYMBOLS IS AVAILABLE ON REQUEST

AMS 5166 IV NE—SERIES V874

RETURN TO:
USGS AND HISTORICAL MAP ARCHIVES

2850
DEC 13 1967