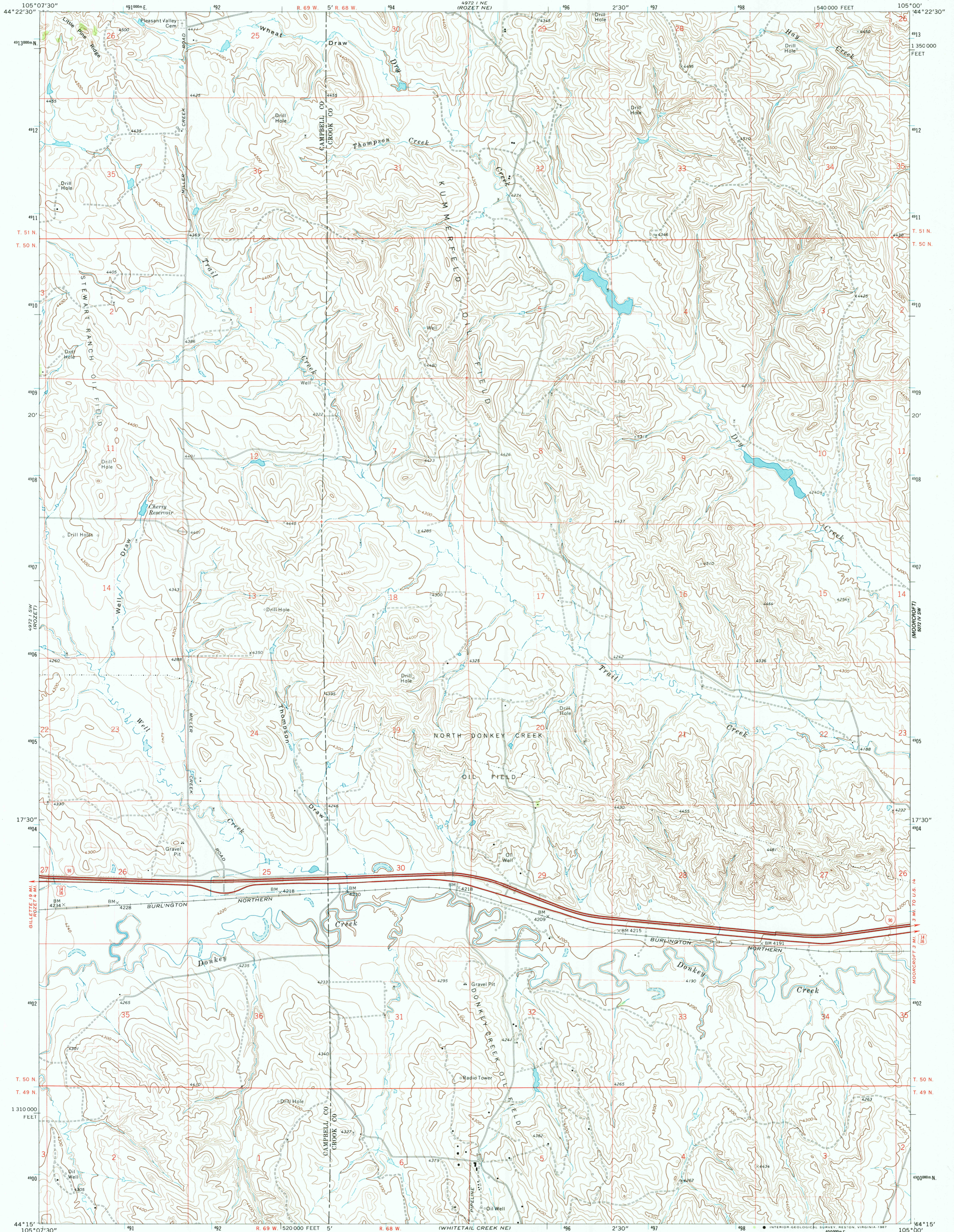
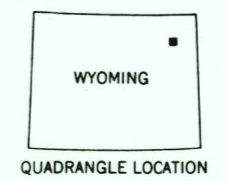
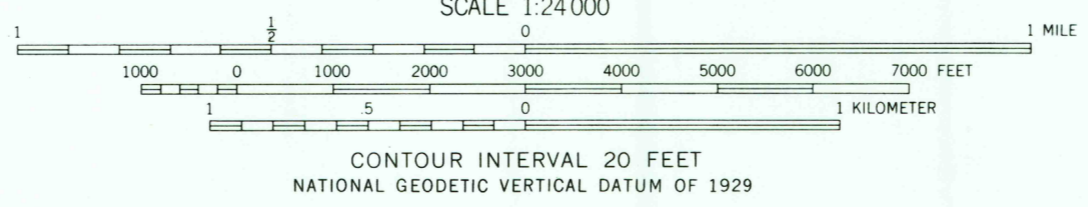
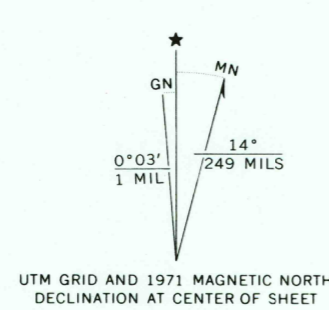


UNITED STATES
DEPARTMENT OF THE INTERIOR
GEOLOGICAL SURVEY

ROZET SE QUADRANGLE
WYOMING
7.5 MINUTE SERIES (TOPOGRAPHIC)



Mapped, edited, and published by the Geological Survey
Control by USGS and USC&GS
Topography by photogrammetric methods from aerial photographs taken 1970. Field checked 1971
Projection and 10,000-foot grid ticks: Wyoming coordinate system, east zone (transverse Mercator) 1000-meter Universal Transverse Mercator grid ticks, zone 13, shown in blue. 1927 North American Datum
Fine red dashed lines indicate selected fence lines
To place on the predicted North American Datum 1983 move the projection lines 6 meters north and 45 meters east as shown by dashed corner ticks



ROAD CLASSIFICATION
Primary highway, hard surface
Secondary highway, hard surface
Light-duty road, hard or improved surface
Unimproved road
Interstate Route
U. S. Route
State Route

THIS MAP COMPLIES WITH NATIONAL MAP ACCURACY STANDARDS
FOR SALE BY U.S. GEOLOGICAL SURVEY, DENVER, COLORADO 80225, OR RESTON, VIRGINIA 22092
A FOLDER DESCRIBING TOPOGRAPHIC MAPS AND SYMBOLS IS AVAILABLE ON REQUEST

ROZET SE, WYO.
44105-C1-TF-024
1971
DMA 4972 I SE-SERIES V874

USGS HISTORICAL MAP
APR 19 1988
REC'D FILE COPY