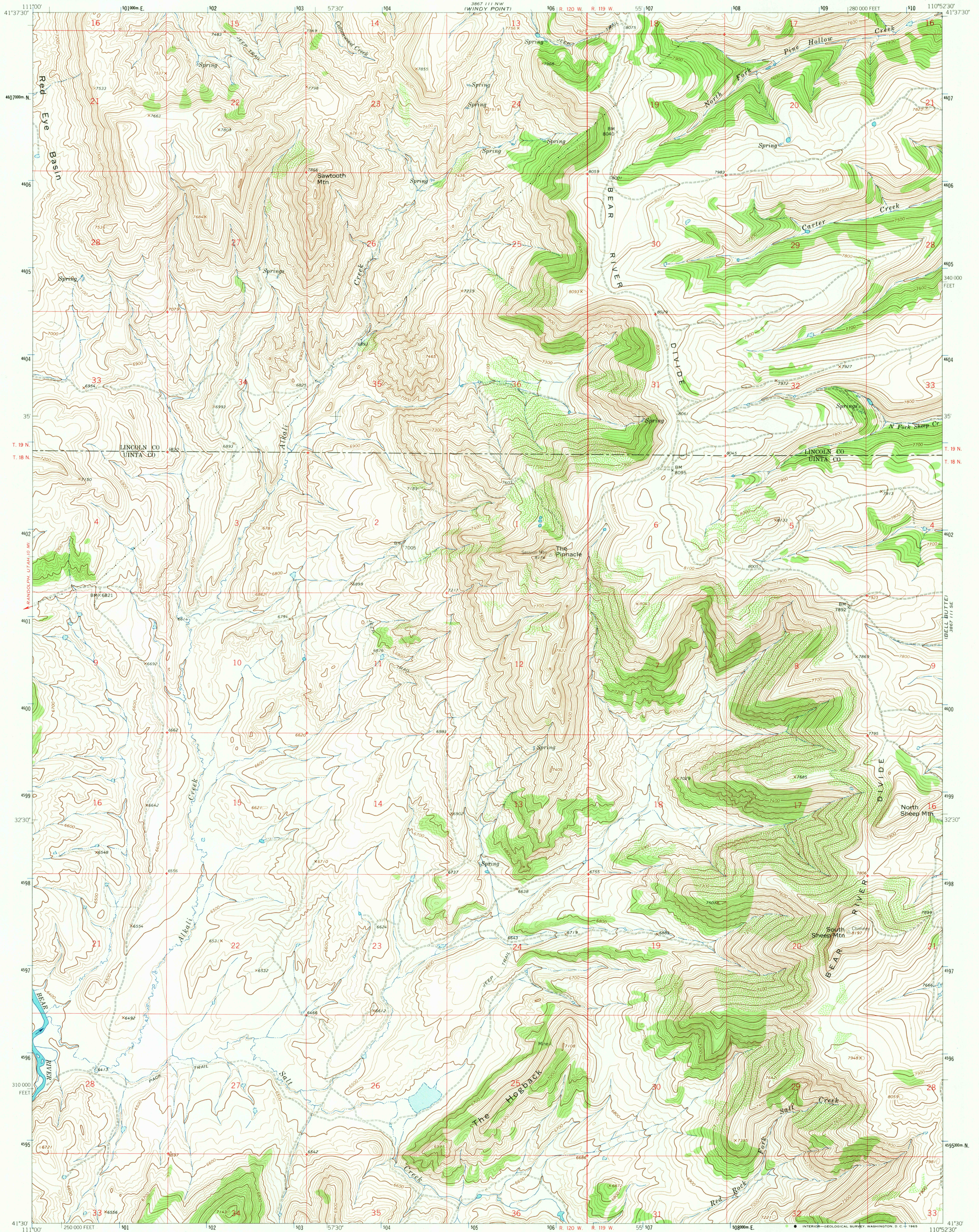
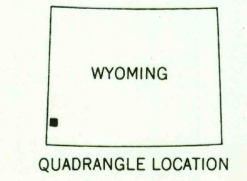
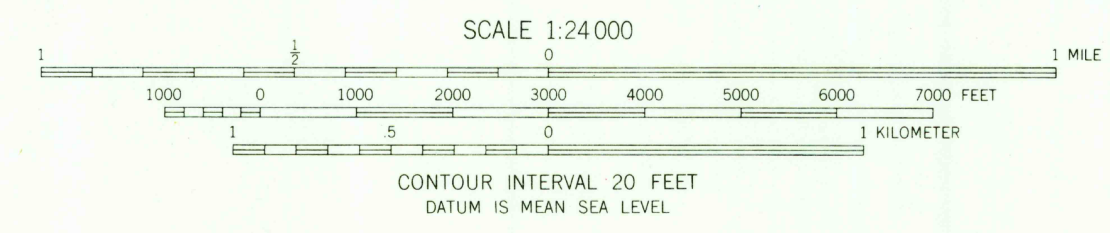
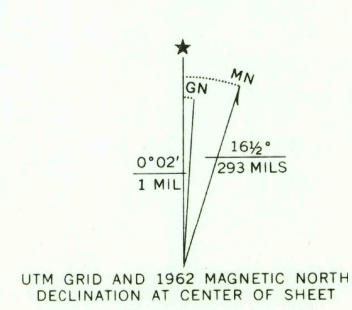


BELL BUTTE NEI



Mapped, edited, and published by the Geological Survey  
Control by USGS and USC&GS  
Topography by photogrammetric methods from aerial  
photographs taken 1961-1962. Field checked 1962  
Polyconic projection. 1927 North American datum  
10,000-foot grid based on Wyoming coordinate system, west zone  
1000-meter Universal Transverse Mercator grid ticks,  
zone 12, shown in blue



ROAD CLASSIFICATION  
Unimproved dirt -----

THIS MAP COMPLIES WITH NATIONAL MAP ACCURACY STANDARDS  
FOR SALE BY U. S. GEOLOGICAL SURVEY, DENVER, COLORADO 80225, OR WASHINGTON, D. C. 20242  
A FOLDER DESCRIBING TOPOGRAPHIC MAPS AND SYMBOLS IS AVAILABLE ON REQUEST

SAWTOOTH MOUNTAIN, WYO.  
N4130-W11052 5/7.5  
1962

AUG 5 1965  
2245  
U.S.G.S.  
FILE COPY  
TOPOGRAPHIC DIVISION

RETURN TO:  
USGS AND HISTORICAL MAP ARCHIVES