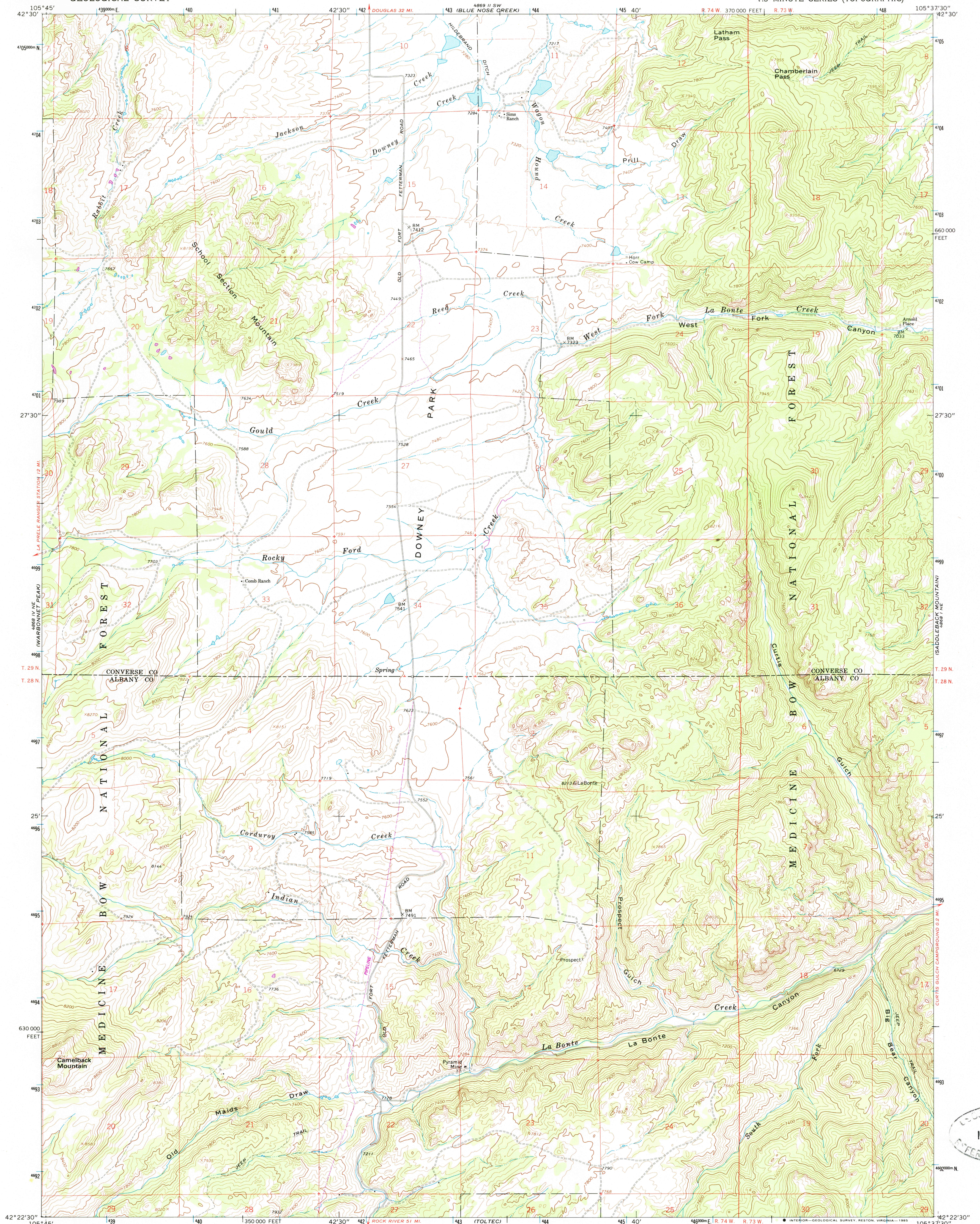
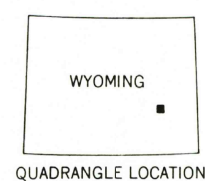
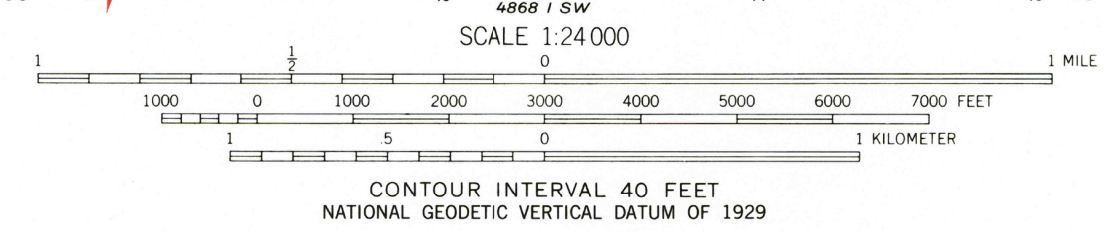
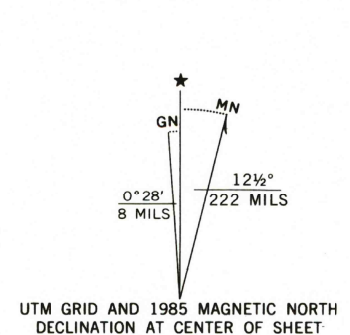


UNITED STATES  
DEPARTMENT OF THE INTERIOR  
GEOLOGICAL SURVEY

SCHOOL SECTION MOUNTAIN QUADRANGLE  
WYOMING  
7.5 MINUTE SERIES (TOPOGRAPHIC)



Mapped, edited, and published by the Geological Survey  
Control by USGS and NOS/NOAA  
Topography by photogrammetric methods from aerial  
photographs taken 1963. Field checked 1964  
Polyconic projection. 1927 North American Datum  
10,000-foot grid based on Wyoming coordinate system,  
east zone  
1000-meter Universal Transverse Mercator grid ticks,  
zone 13, shown in blue  
Fine red dashed lines indicate selected fence lines  
To place on the predicted North American Datum 1983  
move the projection lines 7 meters north and  
48 meters east as shown by dashed corner ticks  
There may be private inholdings within the boundaries  
of the National or State reservations shown on this map



ROAD CLASSIFICATION  
Light duty ——— Unimproved dirt - - - - -

SCHOOL SECTION MOUNTAIN, WYO.  
42105-D6-TF-024

1964  
PHOTOREVISED 1985  
DMA 4868 I NW—SERIES V874

THIS MAP COMPLIES WITH NATIONAL MAP ACCURACY STANDARDS  
FOR SALE BY U. S. GEOLOGICAL SURVEY, DENVER, COLORADO 80225, OR RESTON, VIRGINIA 22092  
A FOLDER DESCRIBING TOPOGRAPHIC MAPS AND SYMBOLS IS AVAILABLE ON REQUEST

NOV 25 1985  
REFERENCE COLLECTION