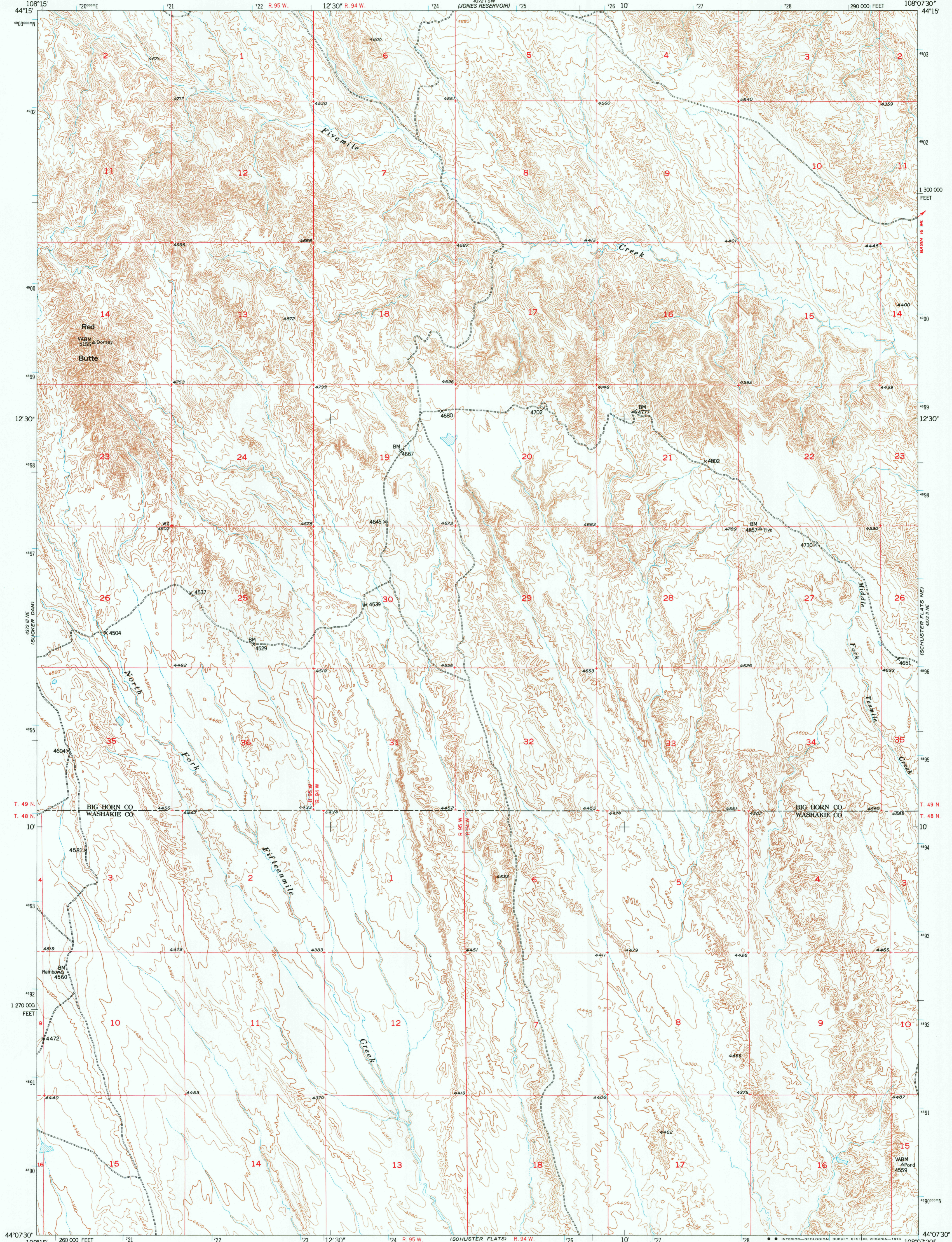
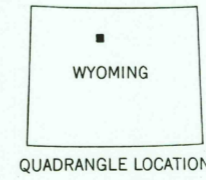
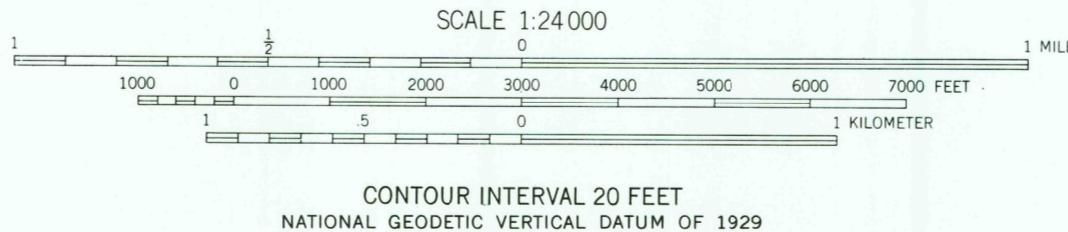
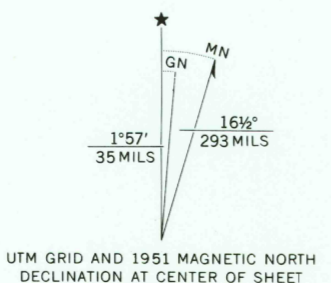


UNITED STATES
DEPARTMENT OF THE INTERIOR
GEOLOGICAL SURVEY

SCHUSTER FLATS NW QUADRANGLE
WYOMING
7.5 MINUTE SERIES (TOPOGRAPHIC)



Mapped, edited, and published by the Geological Survey as part of the Department of the Interior program for the development of the Missouri River Basin Control by USGS and USC&GS
Topography from aerial photographs by multiplex methods
Aerial photographs taken 1949. Field check 1951
Polyconic projection. 1927 North American datum
10,000-foot grid based on Wyoming coordinate system, east central zone
1000-meter Universal Transverse Mercator grid ticks, zone 12, shown in blue
Map photoinspected 1976
No major culture or drainage changes observed



ROAD CLASSIFICATION

Heavy-duty	4 LANE 6 LANE	Light-duty
Medium-duty	4 LANE 6 LANE	Unimproved dirt

U. S. Route (square symbol)
State Route (circle symbol)

THIS MAP COMPLIES WITH NATIONAL MAP ACCURACY STANDARDS
FOR SALE BY U. S. GEOLOGICAL SURVEY, DENVER, COLORADO 80225, OR RESTON, VIRGINIA 22092
A FOLDER DESCRIBING TOPOGRAPHIC MAPS AND SYMBOLS IS AVAILABLE ON REQUEST

SCHUSTER FLATS NW, WYO.
N4407.5-W10807.5/7.5
1951
PHOTOINSPECTED 1976
AMS 4372 II NE-SERIES V874

APR 07 1978
1300

RETURN TO:
USGS AND HISTORICAL MAP ARCHIVES