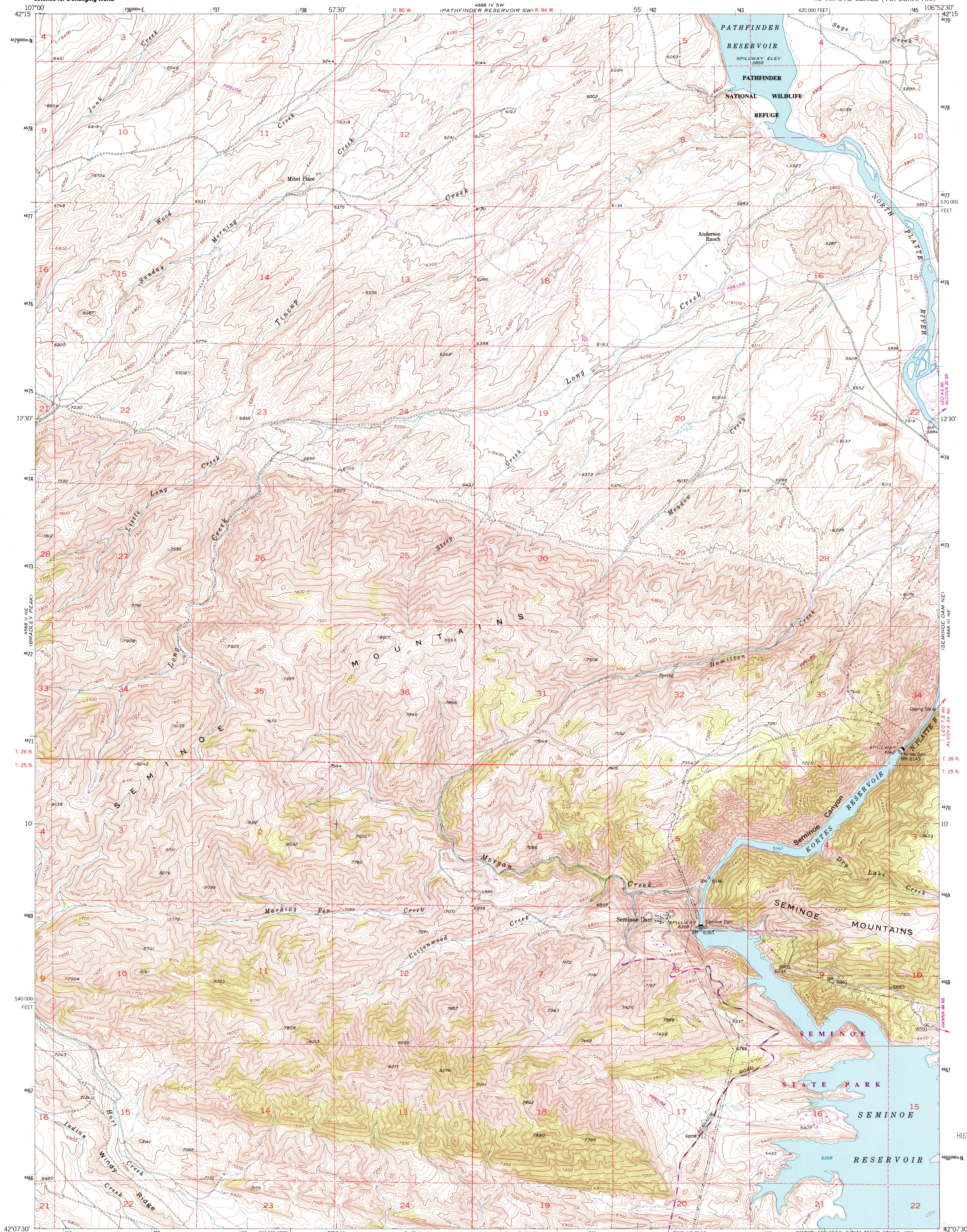


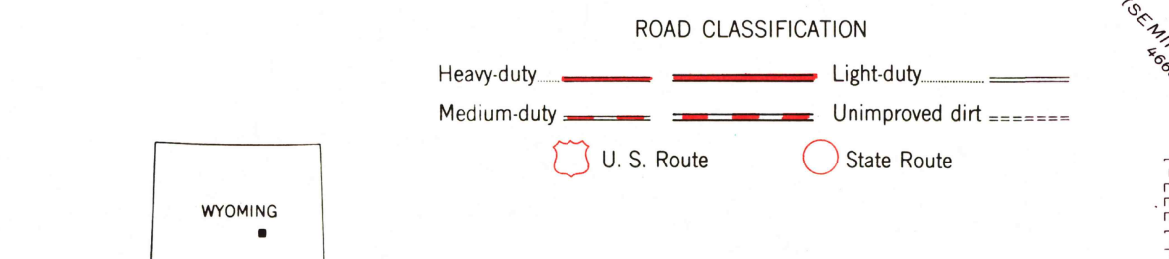
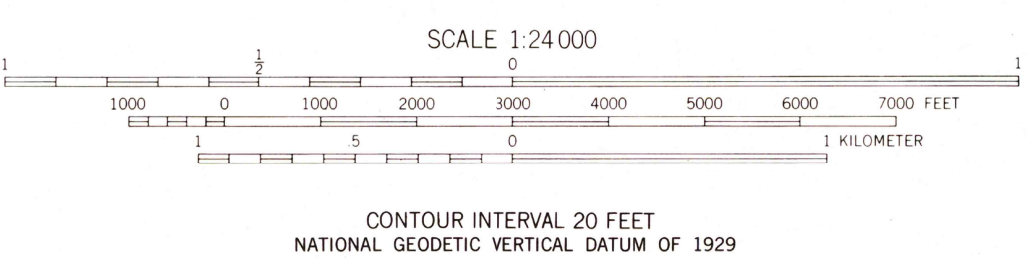
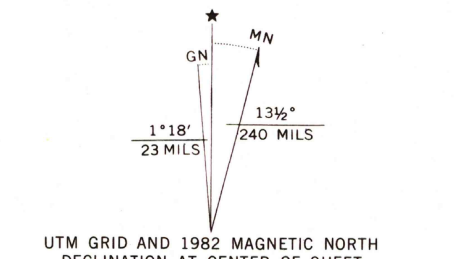


U.S. DEPARTMENT OF THE INTERIOR  
U.S. GEOLOGICAL SURVEY

SEMINOE DAM QUADRANGLE  
WYOMING-CARBON CO.  
7.5 MINUTE SERIES (TOPOGRAPHIC)



Mapped, edited, and published by the Geological Survey as part of the Department of the Interior program for the development of the Missouri River Basin. Control by USGS, NOS/NOAA, and USBR. Topography from aerial photographs by multiplex methods. Aerial photographs taken 1949. Field check 1953. Polyconic projection. 1927 North American datum 10,000-foot grid based on Wyoming coordinate system, east central zone. Dashed land lines indicate approximate locations. There may be private inholdings within the boundaries of 1000-meter Universal Transverse Mercator grid ticks, zone 13, shown in blue. To place on the predicted North American Datum 1983 move the projection lines 8 meters north and 51 meters east as shown by dashed corner ticks.



SEMINOE DAM, WYO. N4207.5-W10652.5/7.5. 1953. PHOTOREVISED 1982. DMA 4668 III NW-SERIES V874. Revisions shown in purple compiled from aerial photographs taken 1980 and other source data. This information not field checked. Map edited 1982.

RECEIVED  
JUN 30 2001  
USGS/USBR  
HISTORICAL MAP ARCHIVES

