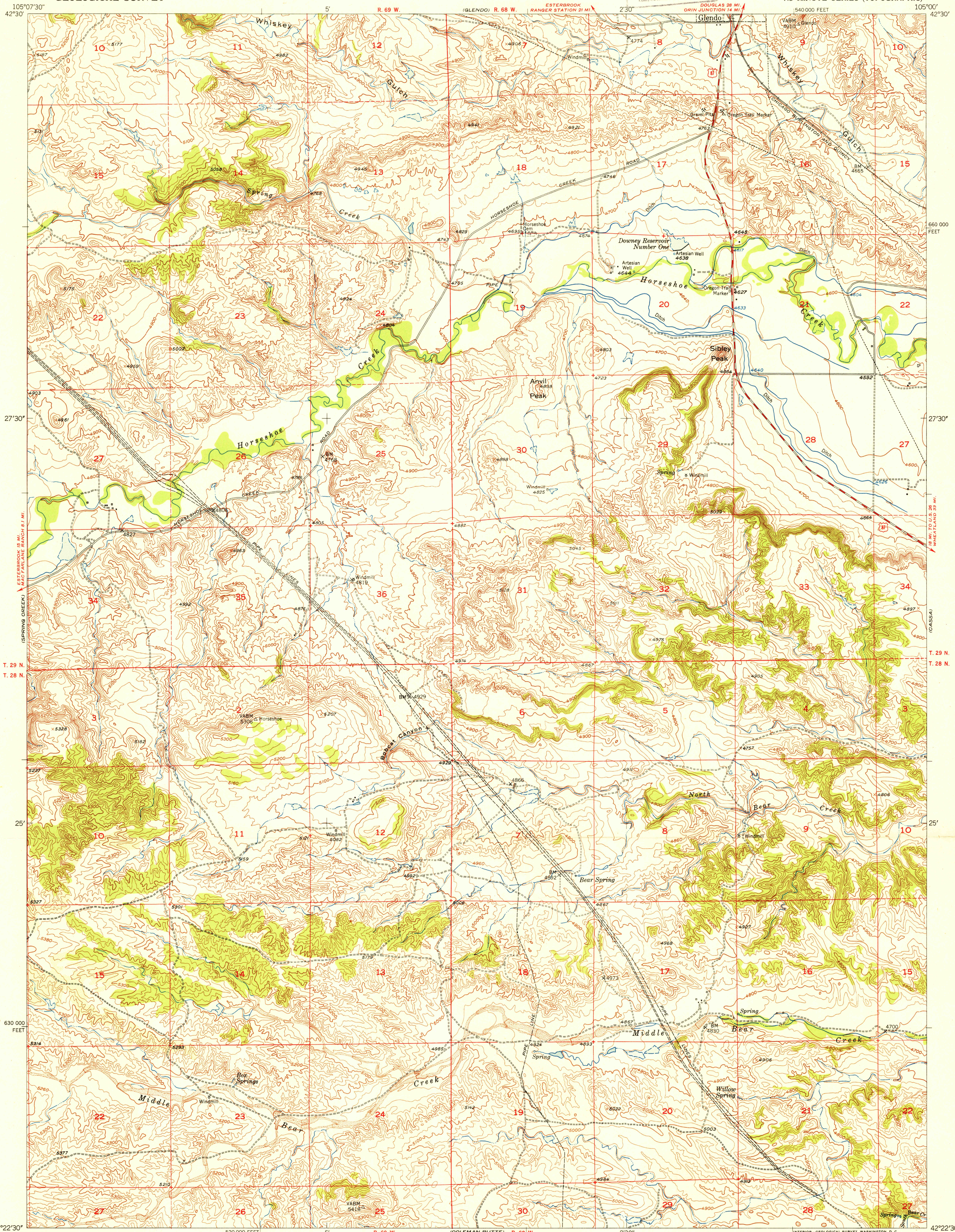


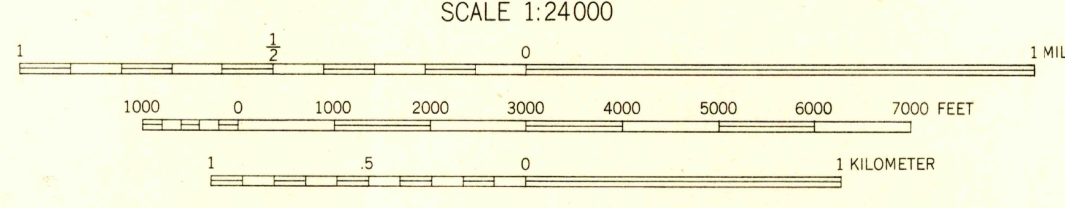
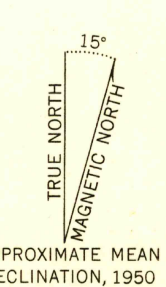
UNITED STATES
DEPARTMENT OF THE INTERIOR
GEOLOGICAL SURVEY

U.S.G.S.
FILE COPY
Inspection and Editing.

SIBLEY PEAK QUADRANGLE
WYOMING-PLATTE CO.
7.5 MINUTE SERIES (TOPOGRAPHIC)



Maped, edited and published by the Geological Survey as part of the Department of the Interior program for the development of the Missouri River Basin. Control by USGS and USC&GS. Topography from aerial photographs by multiplex methods. Aerial photographs taken June 1947 and September 1948. Field check, 1950. Polyconic projection. 1927 North American datum. 10,000-foot grid based on Wyoming coordinate system, east zone. Dashed land lines indicate approximate location.



ROAD CLASSIFICATION
Heavy-duty 4 LANE 16 LANE Light-duty
Medium-duty 4 LANE 16 LANE Unimproved dirt
U.S. Route State Route

U.S.G.S.
FILE COPY
Inspection and Editing.

SIBLEY PEAK, WYO.
N4222.5-W10500/7.5
EDITION OF 1951

THIS MAP COMPLIES WITH NATIONAL MAP ACCURACY STANDARDS
FOR SALE BY U.S. GEOLOGICAL SURVEY, FEDERAL CENTER, DENVER, COLORADO OR WASHINGTON 25, D.C.
A FOLDER DESCRIBING TOPOGRAPHIC MAPS AND SYMBOLS IS AVAILABLE ON REQUEST

USGS HISTORICAL MAP ARCHIVES