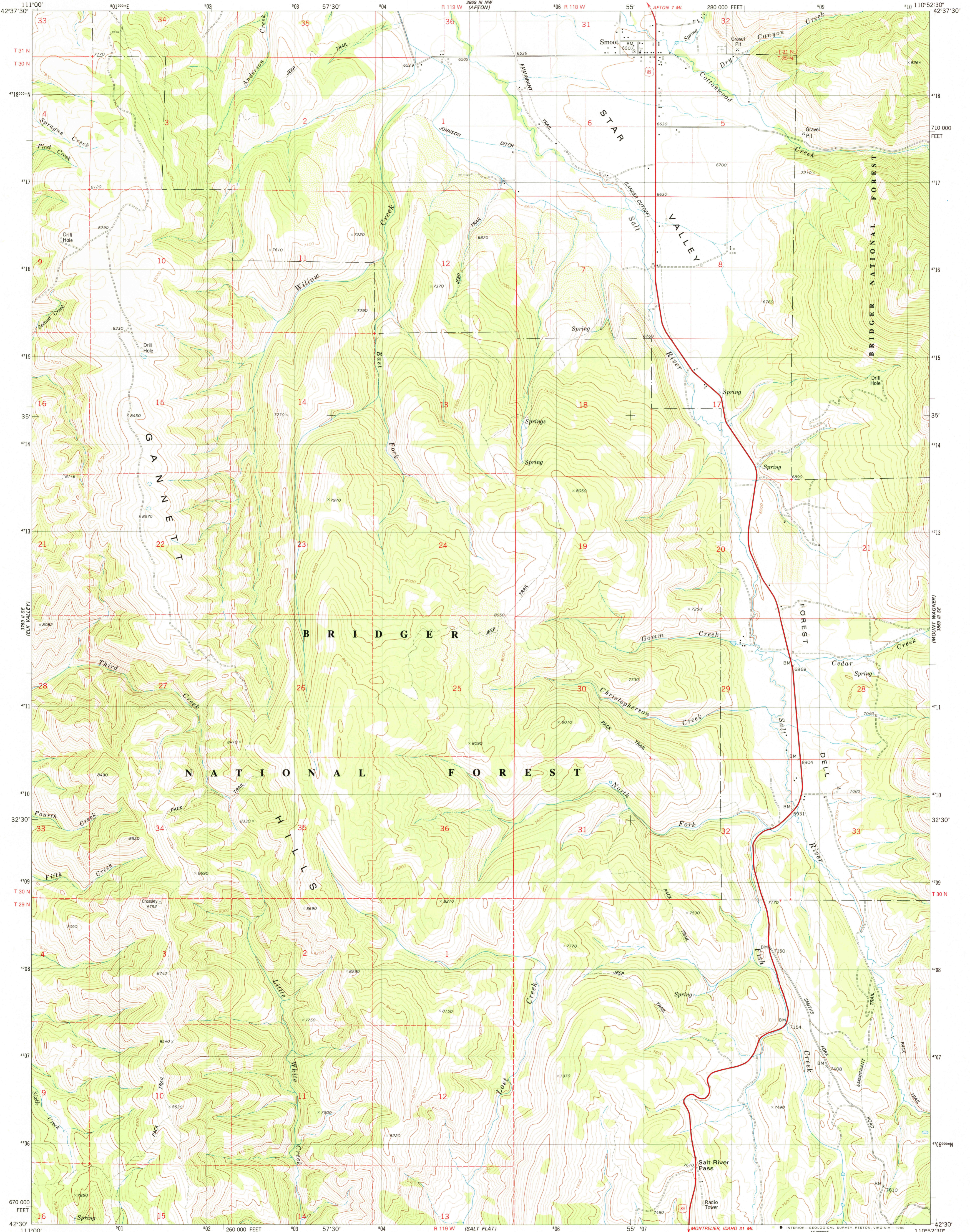


3889 III SW (SALT FLAT)

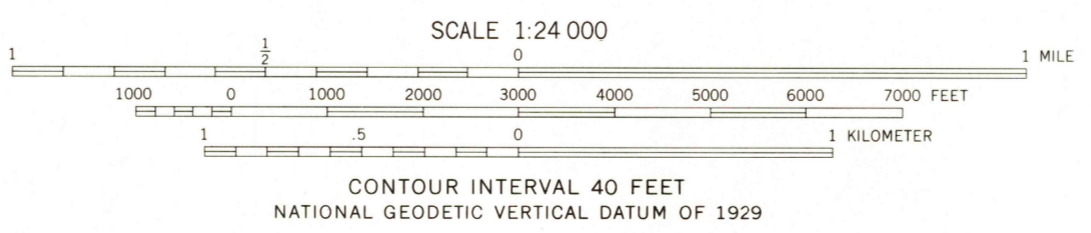
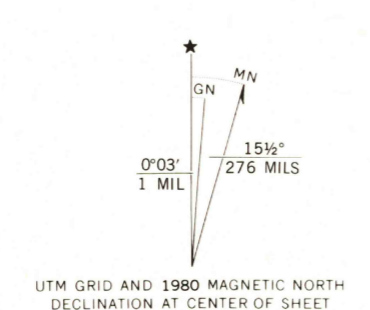
UNITED STATES
DEPARTMENT OF THE INTERIOR
GEOLOGICAL SURVEY

SMOOT QUADRANGLE
WYOMING-LINCOLN CO.
7.5 MINUTE SERIES (TOPOGRAPHIC)

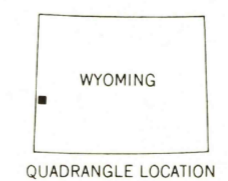
3889 III SW (SALT FLAT)



Maped, edited, and published by the Geological Survey
Control by USGS and NOS/NOAA
Topography by photogrammetric methods from aerial photographs taken 1973. Field checked 1974. Map edited 1980
Projection and 10,000-foot grid ticks: Wyoming coordinate system, west zone (transverse Mercator)
1000-meter Universal Transverse Mercator grid, zone 12 1927 North American datum
To place on the predicted North American Datum 1983 move the projection lines 11 meters north and 63 meters east as shown by dashed corner ticks
Where omitted, land lines have not been established
Fine red dashed lines indicate selected fence lines
There may be private inholdings within the boundaries of the National or State reservations shown on this map



CONTOUR INTERVAL 40 FEET
NATIONAL GEODETIC VERTICAL DATUM OF 1929



ROAD CLASSIFICATION

Primary highway, hard surface	Light-duty road, hard or improved surface
Secondary highway, hard surface	Unimproved road
Interstate Route	U. S. Route
	State Route

USGS
Historical File
Topographic Division

SMOOT, WYO.
N4230-W11052.5/7.5

1980
DMA 3889 III SW-SERIES V874

RETURN TO:
USGS AND HISTORICAL MAP ARCHIVES

OCT 23 1980