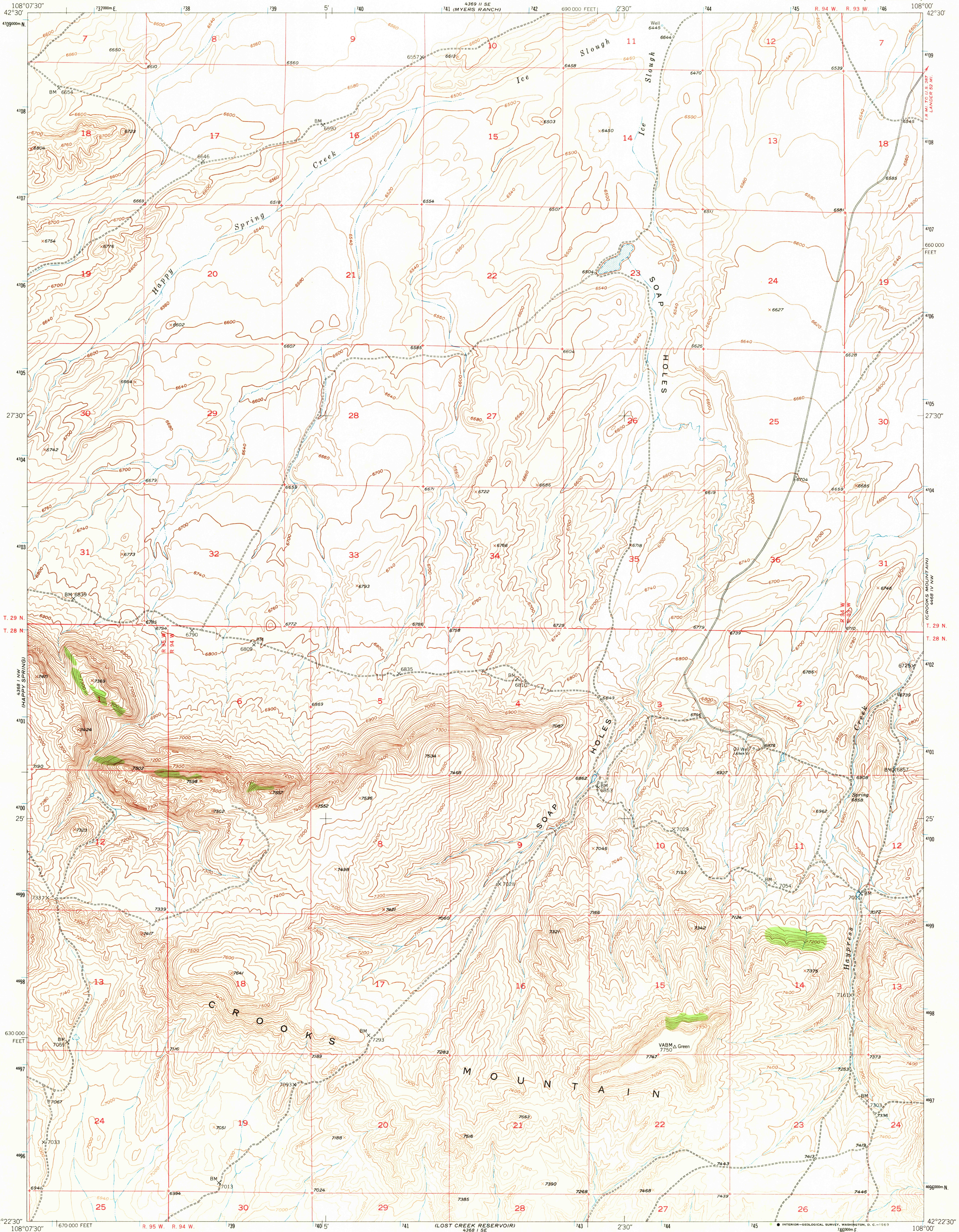


UNITED STATES
DEPARTMENT OF THE INTERIOR
GEOLOGICAL SURVEY

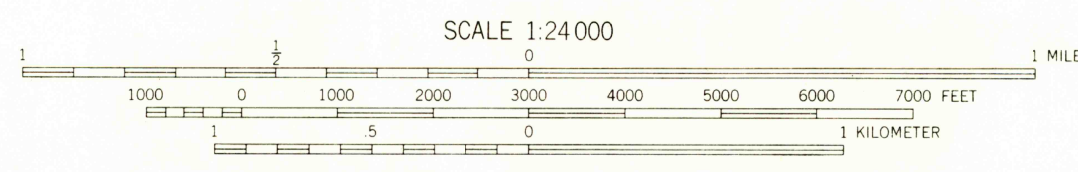
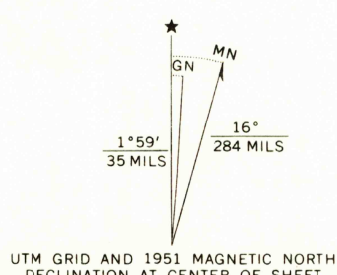
SOAP HOLES QUADRANGLE
WYOMING-FREMONT CO.
7.5 MINUTE SERIES (TOPOGRAPHIC)



Mapped, edited, and published by the Geological Survey as part of the Department of the Interior program for the development of the Missouri River Basin Control by USGS and USC&GS

Topography from aerial photographs by multiplex methods Aerial photographs taken 1947. Field check 1951

Polyconic projection. 1927 North American datum 10,000-foot grid based on Wyoming coordinate system, west central zone 1000 meter Universal Transverse Mercator grid ticks, zone 12, shown in blue



ROAD CLASSIFICATION	
Heavy-duty	4 LANE 16 LANE Light duty
Medium-duty	4 LANE 16 LANE Unimproved dirt
U. S. Route	State Route

U.S.G.S.
FILE COPY
TOPOGRAPHIC DIVISION

SOAP HOLES, WYO.
N4222.5-W10800/7.5
1951

AMS 4368 1 NE-SERIES V874

THIS MAP COMPLIES WITH NATIONAL MAP ACCURACY STANDARDS FOR SALE BY U. S. GEOLOGICAL SURVEY, DENVER, COLORADO 80225 OR WASHINGTON, D. C. 20242 A FOLDER DESCRIBING TOPOGRAPHIC MAPS AND SYMBOLS IS AVAILABLE ON REQUEST

RETURN TO:
USGS AND HISTORICAL MAP ARCHIVES

370
FEB 4 1969