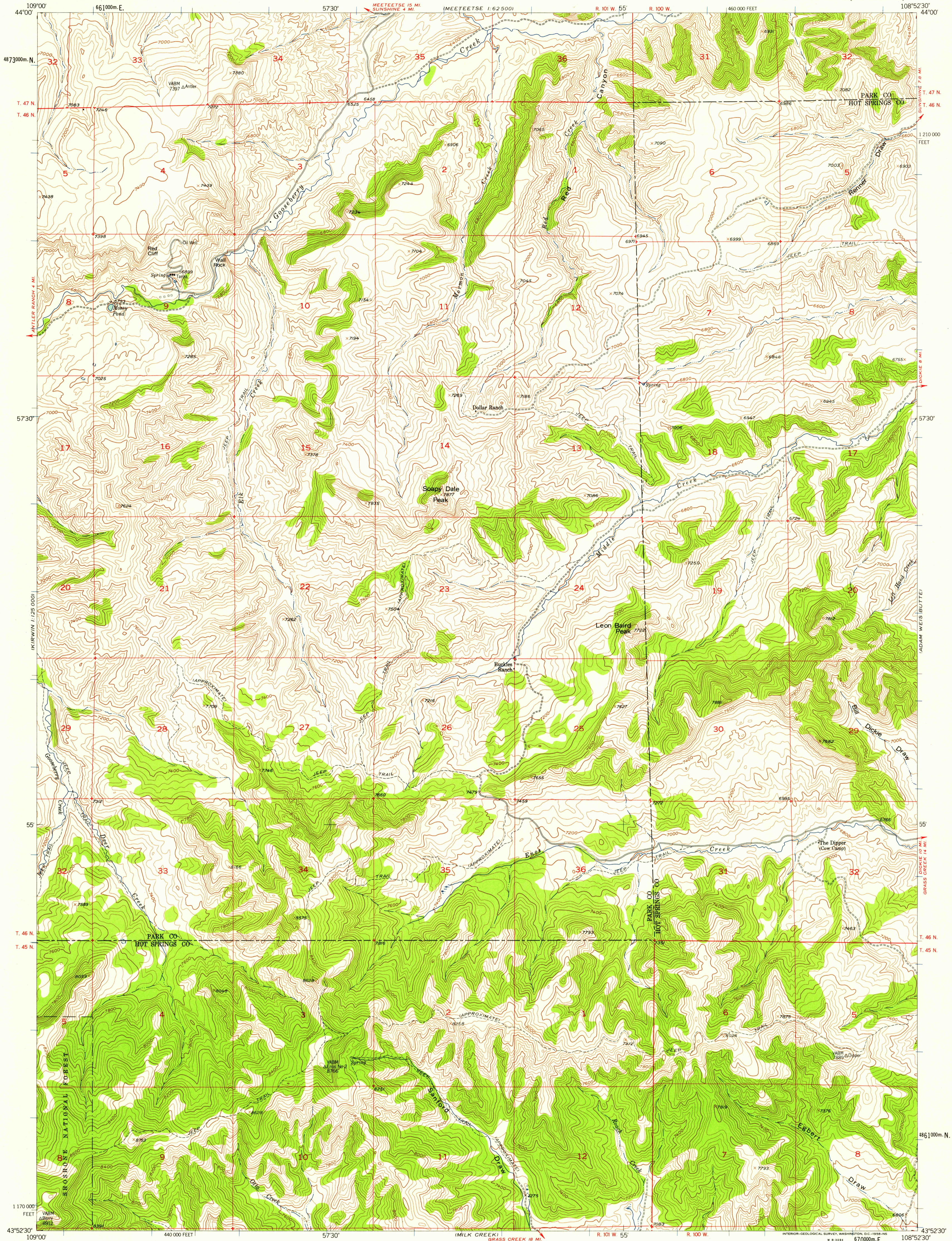
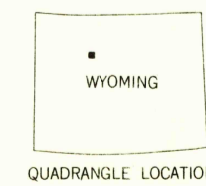
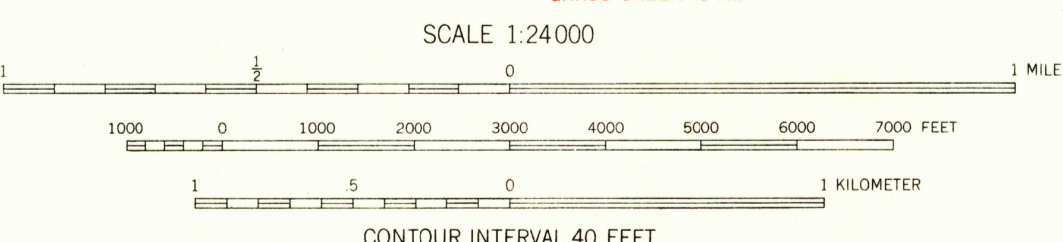


MEETEETSE
1:25,000



Mapped, edited, and published by the Geological Survey as part of the Department of the Interior program for the development of the Missouri River Basin Control by USGS and USC&GS
Topography from aerial photographs by multiplex methods
Aerial photographs taken 1953. Field check 1956
Polyconic projection. 1927 North American datum
10,000 foot grid based on Wyoming coordinate system, west central zone
1000-meter Universal Transverse Mercator grid ticks, zone 12, shown in blue

TRUE NORTH
MAGNETIC NORTH
APPROXIMATE MEAN DECLINATION, 1956



ROAD CLASSIFICATION
Light-duty Unimproved dirt - - - - -

SOAPY DALE PEAK, WYO.
N4352.5—W10852.5/7.5
1956

THIS MAP COMPLIES WITH NATIONAL MAP ACCURACY STANDARDS
FOR SALE BY U.S. GEOLOGICAL SURVEY, DENVER 2, COLORADO OR WASHINGTON 25, D. C.
A FOLDER DESCRIBING TOPOGRAPHIC MAPS AND SYMBOLS IS AVAILABLE ON REQUEST

U.S.G.S.
FILE COPY
TOPOGRAPHIC DIVISION

RETURN TO:
USGS AND RELEVANT MAP ARCHIVES

JUL 15 1958

1900