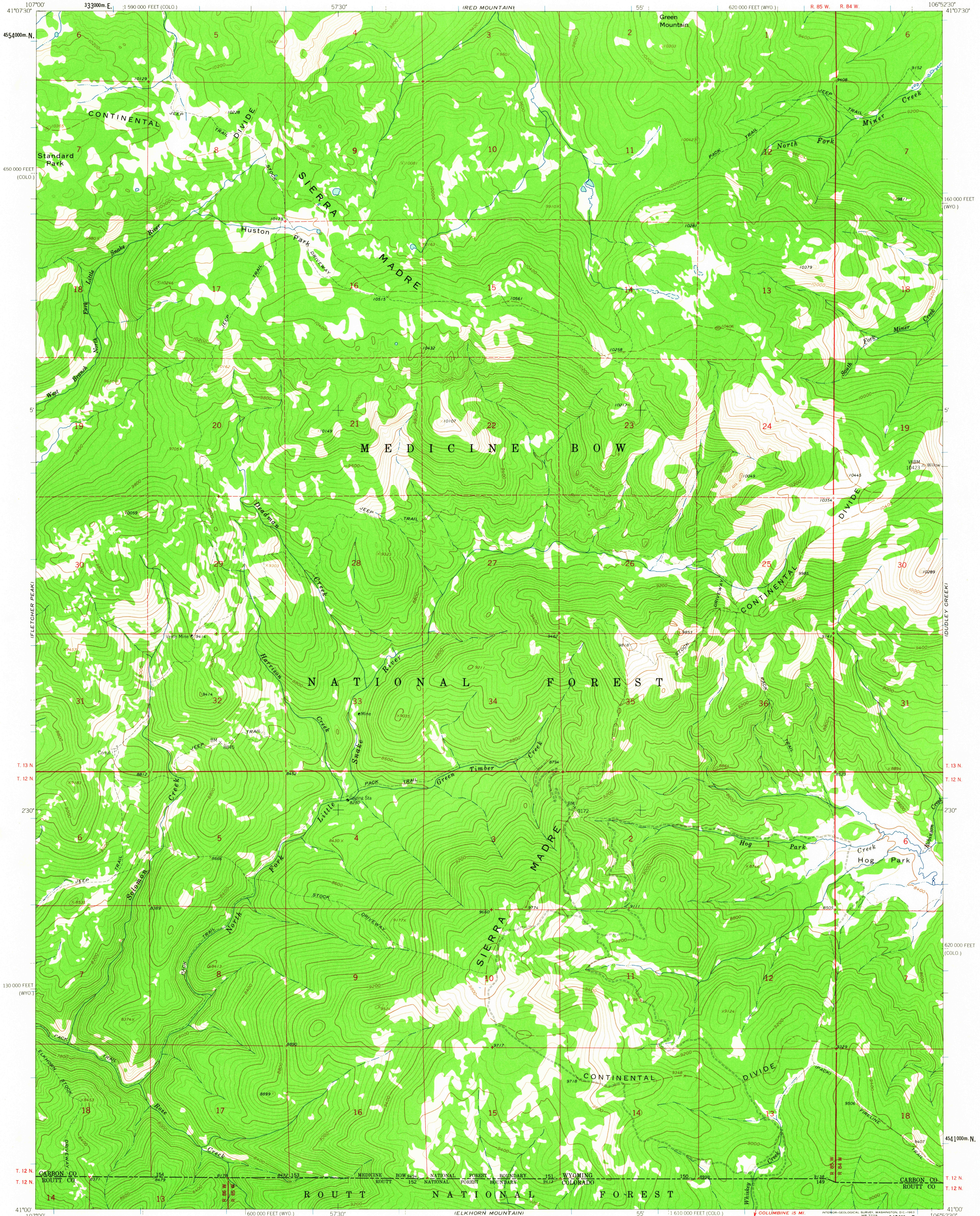


UNITED STATES
DEPARTMENT OF THE INTERIOR
GEOLOGICAL SURVEY

SOLOMON CREEK QUADRANGLE
WYOMING-COLORADO
7.5 MINUTE SERIES (TOPOGRAPHIC)



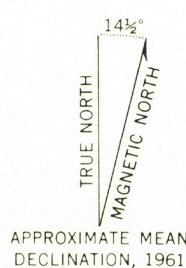
Mapped, edited, and published by the Geological Survey
as part of the Department of the Interior program
for the development of the Missouri River Basin

Control by USGS and USC&GS

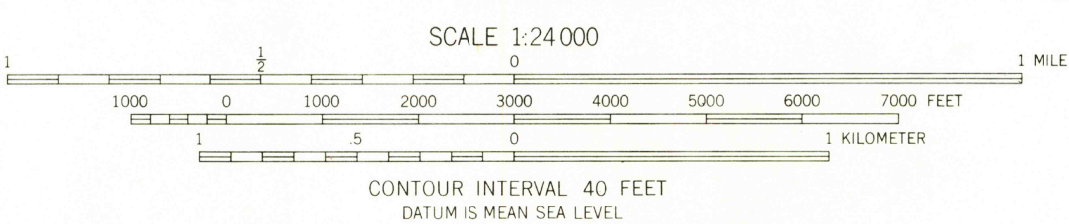
Topography by photogrammetric methods from aerial
photographs taken 1953 and 1957. Field checked 1961

Polycyclic projection. 1927 North American datum
10,000-foot grids based on Wyoming coordinate system, east central zone
and Colorado coordinate system, north zone
1000-meter Universal Transverse Mercator grid ticks,
zone 13, shown in blue

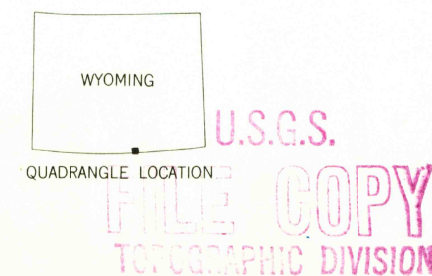
Certain land lines are omitted because of insufficient data



APPROXIMATE MEAN
DECLINATION, 1961



THIS MAP COMPLIES WITH NATIONAL MAP ACCURACY STANDARDS
FOR SALE BY U.S. GEOLOGICAL SURVEY, DENVER 25, COLORADO OR WASHINGTON 25, D.C.
A FOLDER DESCRIBING TOPOGRAPHIC MAPS AND SYMBOLS IS AVAILABLE ON REQUEST



SOLOMON CREEK, WYO.-COLO.
N4100-W10652.57.5

ROAD CLASSIFICATION
Unimproved dirt =====

1961

RETURN TO:
USGS AND HISTORICAL MAP ARCHIVES

SEP - 6 1961

2655