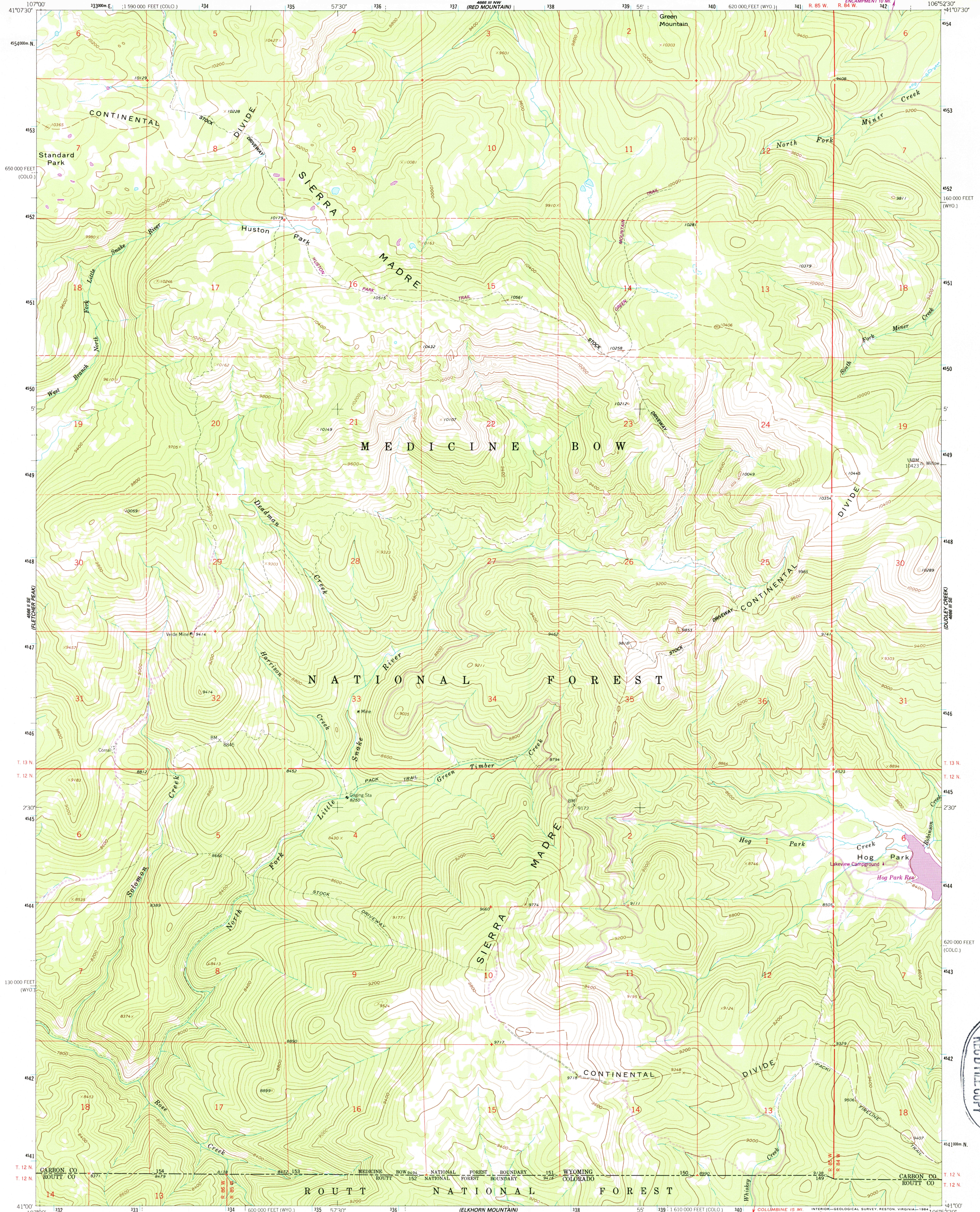


UNITED STATES  
DEPARTMENT OF THE INTERIOR  
GEOLOGICAL SURVEY

SOLOMON CREEK QUADRANGLE  
WYOMING-COLORADO  
7.5 MINUTE SERIES (TOPOGRAPHIC)



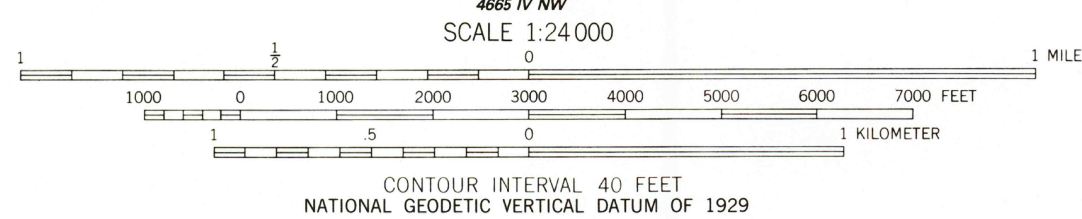
Mapped, edited, and published by the Geological Survey as part of the Department of the Interior program for the development of the Missouri River Basin

Control by USGS and NOS/NOAA

Topography by photogrammetric methods from aerial photographs taken 1953 and 1957. Field checked 1961

Polyconic projection 1927 North American Datum  
10,000 foot grids based on Wyoming coordinate system, east central zone and Colorado coordinate system, north zone  
1000 meter Universal Transverse Mercator grid ticks, zone 13, shown in blue  
Certain land lines are omitted because of insufficient data  
There may be private inholdings within the boundaries of the National or State reservations shown on this map

To place on the predicted North American Datum 1983 move the projection lines 7 meters north and 51 meters east as shown by dashed corner ticks



Revisions shown in purple and woodland compiled from aerial photographs taken 1980 and other source data  
Partial field check by U.S. Forest Service. Map edited 1983

ROAD CLASSIFICATION

Unimproved dirt -----  
Light-duty road, hard or improved surface - - - - -

SOLOMON CREEK, WYO.-COLO.  
41106-A8-TF-024

1961  
PHOTOREVISED 1983  
DMA 4666 III SW-SERIES V874