

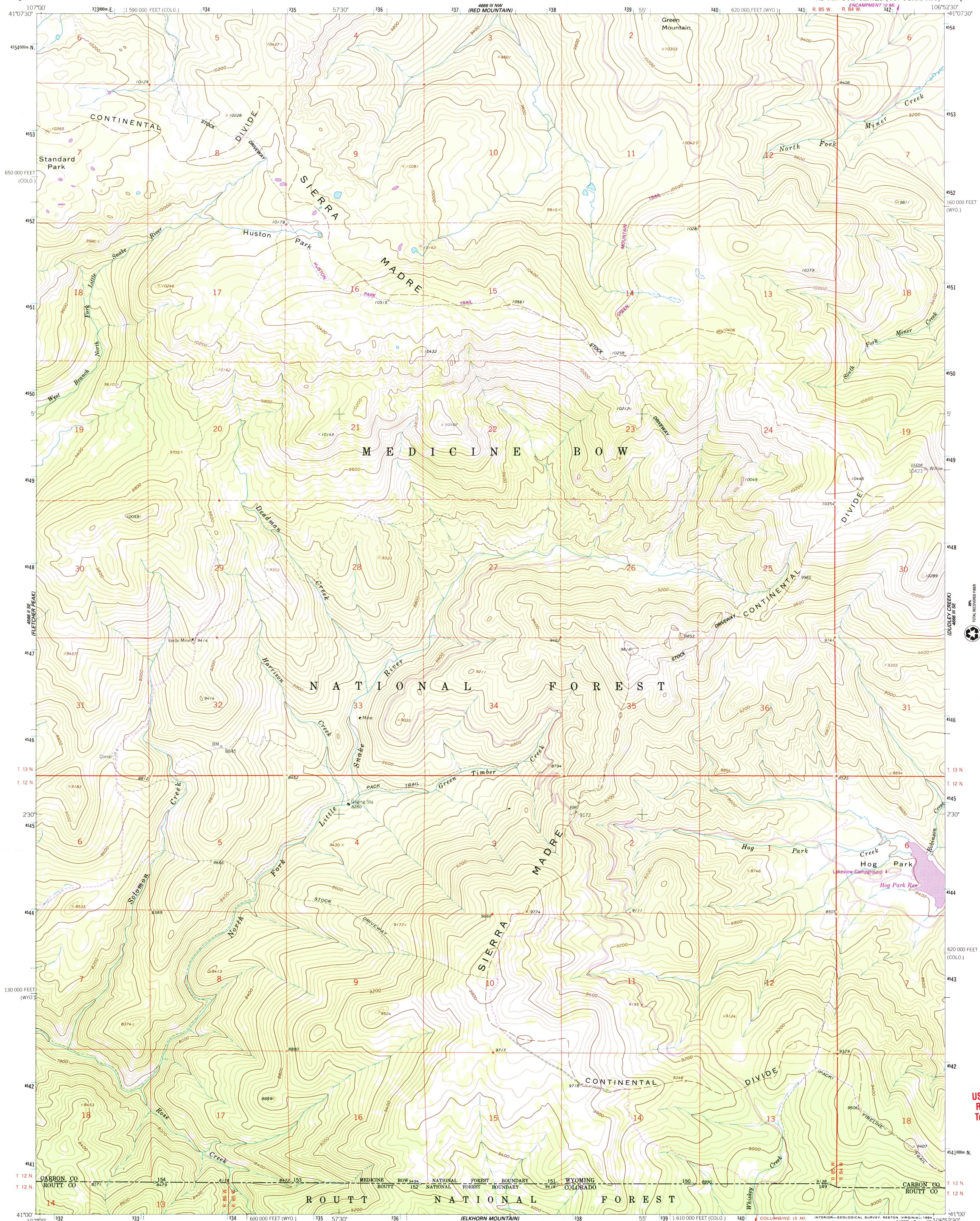
4666 III NE
ENCAMPMENT



U.S. DEPARTMENT OF THE INTERIOR
U.S. GEOLOGICAL SURVEY

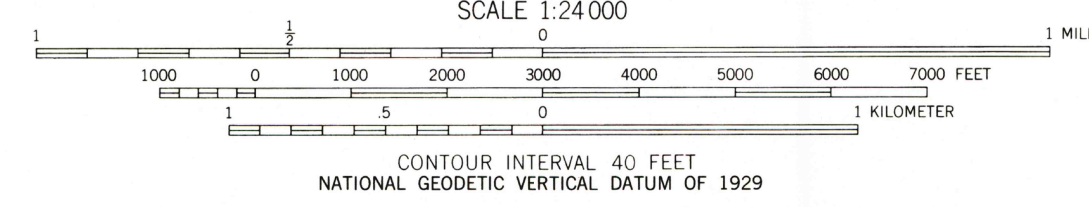
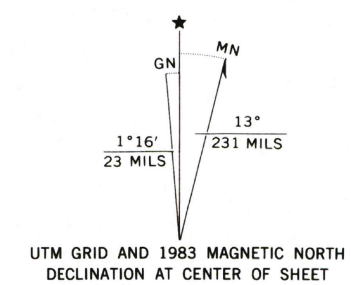
SOLOMON CREEK QUADRANGLE
WYOMING-COLORADO
7.5 MINUTE SERIES (TOPOGRAPHIC)

4666 III NE
ENCAMPMENT

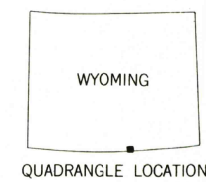


Mapped, edited, and published by the Geological Survey as part of the Department of the Interior program for the development of the Missouri River Basin
Control by USGS and NOS/NOAA
Topography by photogrammetric methods from aerial photographs taken 1953 and 1957. Field checked 1961
Polyconic projection. 1927 North American Datum
10,000-foot grids based on Wyoming coordinate system, east central zone and Colorado coordinate system, north zone
1000-meter Universal Transverse Mercator grid ticks, zone 13, shown in blue
Certain land lines are omitted, because of insufficient data
There may be private inholdings within the boundaries of the National or State reservations shown on this map

To place on the predicted North American Datum 1983 move the projection lines 7 meters north and 51 meters east as shown by dashed corner ticks



THIS MAP COMPLIES WITH NATIONAL MAP ACCURACY STANDARDS
FOR SALE BY U. S. GEOLOGICAL SURVEY, DENVER, COLORADO 80225, OR RESTON, VIRGINIA 22092
A FOLDER DESCRIBING TOPOGRAPHIC MAPS AND SYMBOLS IS AVAILABLE ON REQUEST



SOLOMON CREEK, WYO.-COLO.
41106-A8-TF-024
1961
PHOTOREVISED 1983
DMA 4666 III SW-SERIES V874

Revisions shown in purple and woodland compiled from aerial photographs taken 1980 and other source data
Partial field check by U.S. Forest Service. Map edited 1983

ROAD CLASSIFICATION
Unimproved dirt =====
Light-duty road, hard or improved surface =====

USGS Library
Reston, VA.
Topo Archive

