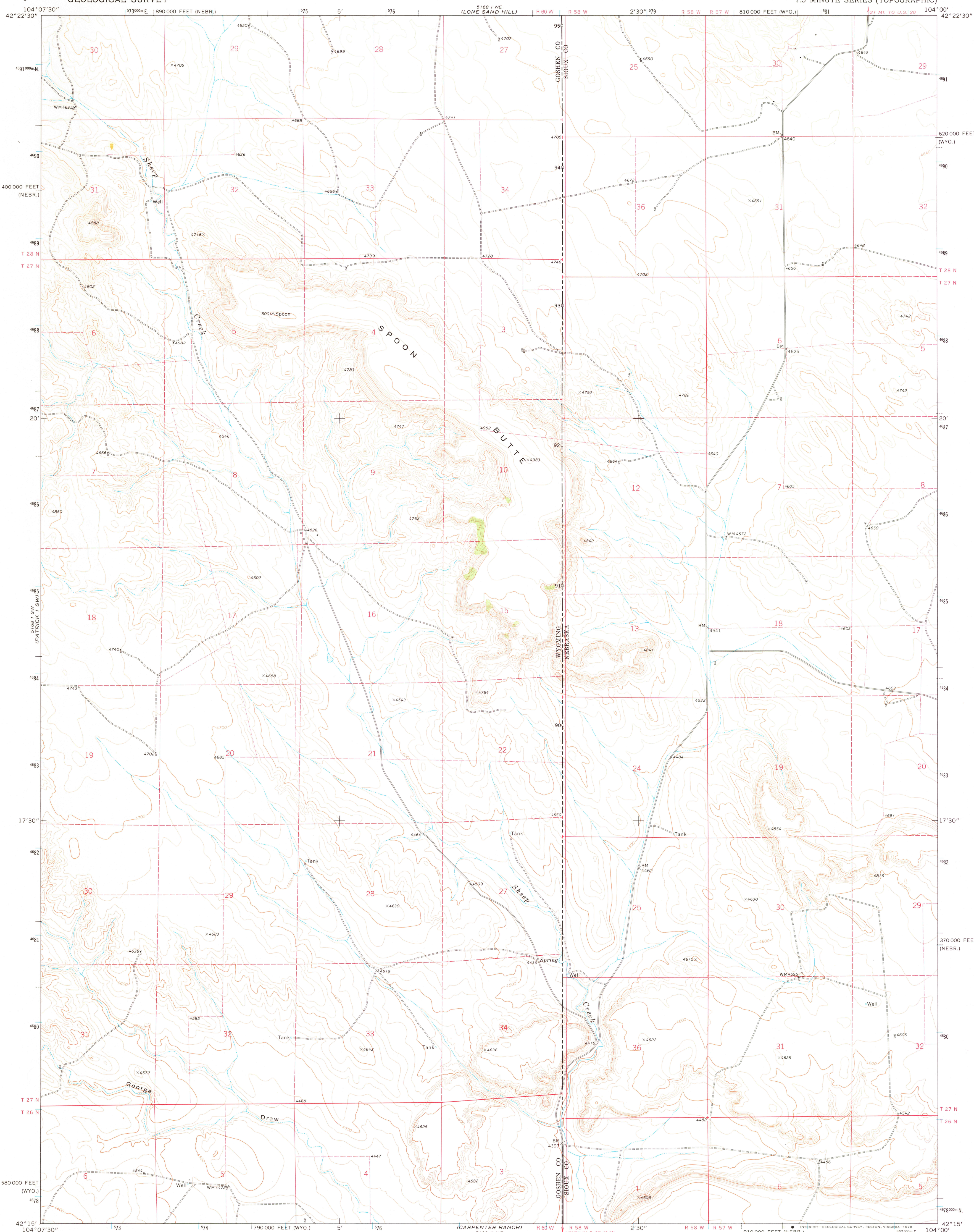
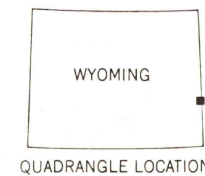
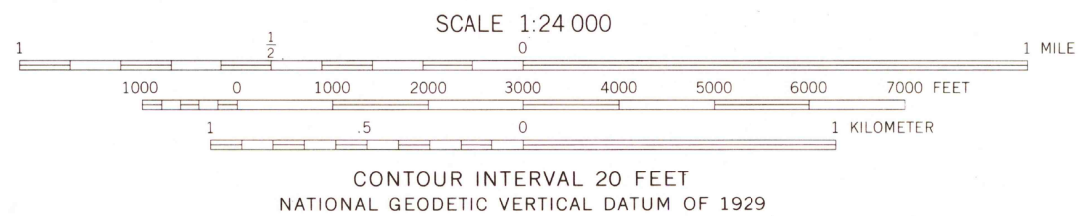
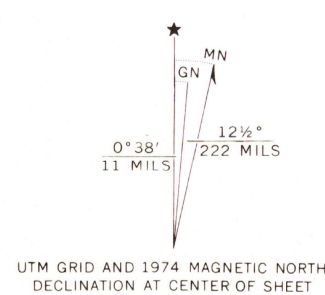


UNITED STATES  
DEPARTMENT OF THE INTERIOR  
GEOLOGICAL SURVEY

SPOON BUTTE QUADRANGLE  
WYOMING-NEBRASKA  
7.5 MINUTE SERIES (TOPOGRAPHIC)



Mapped, edited, and published by the Geological Survey  
Control by USGS and NOS/NOAA  
Topography by photogrammetric methods from aerial  
photographs taken 1973. Field checked 1974  
Projection: Wyoming coordinate system,  
east zone (transverse Mercator)  
10,000-foot grid ticks based on Wyoming  
coordinate system, east zone and Nebraska  
coordinate system, north zone  
1000-meter Universal Transverse Mercator grid ticks,  
zone 13, shown in blue. 1927 North American datum  
Fine red dashed lines indicate selected fence lines



ROAD CLASSIFICATION	
Primary highway, hard surface	Light-duty road, hard or improved surface
Secondary highway, hard surface	Unimproved road
Interstate Route	U. S. Route
	State Route

THIS MAP COMPLIES WITH NATIONAL MAP ACCURACY STANDARDS  
FOR SALE BY U. S. GEOLOGICAL SURVEY, DENVER, COLORADO 80225, OR RESTON, VIRGINIA 22092  
A FOLDER DESCRIBING TOPOGRAPHIC MAPS AND SYMBOLS IS AVAILABLE ON REQUEST

USGS  
Historical File  
Topographic Division

SPOON BUTTE, WYO.-NEBR.  
N4215-W10400/7.5

1974

AMS 5168 1 SE-SERIES V874

RETURN TO:  
USGS MID HISTORICAL MAP ARCHIVES

FEB 23 1978  
2750